

**Behavioral Health Division Update
Behavioral Health Commission
December 2019 Data
January 22, 2020 Meeting**

ASSISTANT & DEPUTY DIRECTOR UPDATES

(Katy Eckert & Jamie Samboceti)

- CareManager is up and running on the West Slope of the County. This platform was developed by Netsmart, the company responsible for the Behavioral Health Division's electronic health record "Avatar." This separate module can be utilized by participating agencies to provide them with access to a shared care plan, transfer consumer data, track measures and manage authorizations across their network. Having such information readily available ensures an individual receives the appropriate care at the appropriate location and time, optimizing care outcomes. PERT is accessing the system, and it is also accessed during the West Slope's MDT meetings for the care coordination of our at risk, high utilizers of our systems.

EL DORADO COUNTY BEHAVIORAL HEALTH DIVISION STAFFING

- **New Hires:**
 - Jenny Misirli, MH Clinician 1A
 - Rachel Montiel, MH Clinician start date January 4
 - Sara Vitale, Medical Office Assistant start date January 4
 - Lorri Washabaugh, Medical Office Assistant start date January 4
- **Promotions:**
 - Nora Mays, Health Education Coordinator for SUDS Prevention
- **Recruitments:**
 - Ongoing
 - WS Mental Health Clinicians (Extra Help and Regular)
 - WS MH Workers (Extra Help and Regular)
 - WS MH Aides (Extra Help and Regular)
 - WS Medical Office Assistant (Extra Help)
 - SLT Extra Help Clinicians, Workers and Aides
 - WS Health Education Coordinators - SUDS
 - WS Mental Health Clinician - SUDS
 - WS Health Program Specialist - SUDS
 - WS Psychiatric Technicians
 - WS Analyst (Extra Help and Regular)
 - New
 - None
- **Separations:**
 - Arturo Rangel, MH Clinician
 - Jessica Faucett, MHW SLT

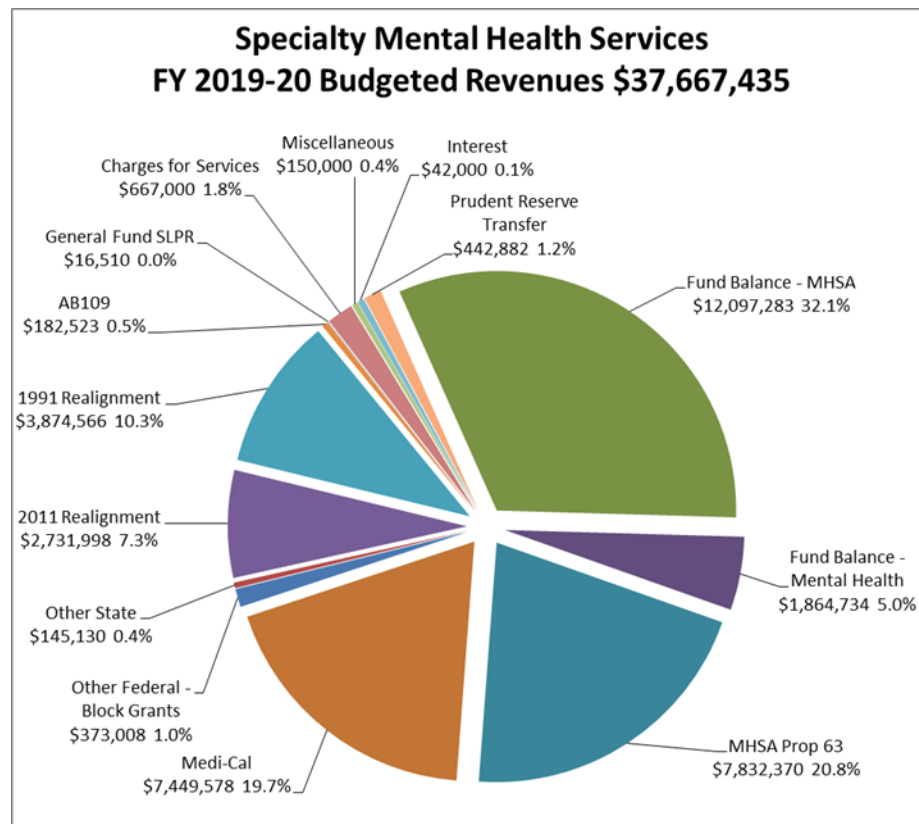
- Cynthia Coate, Psychiatric Technician
- Karen Baker, Medical Office Assistant
- **Position Changes:**
 - Nora Mays, promotion from Program Assistant to Health Education Coordinator (SUDS, Youth Prevention Program)

EL DORADO COUNTY BEHAVIORAL HEALTH FINANCIAL UPDATE

General Information:

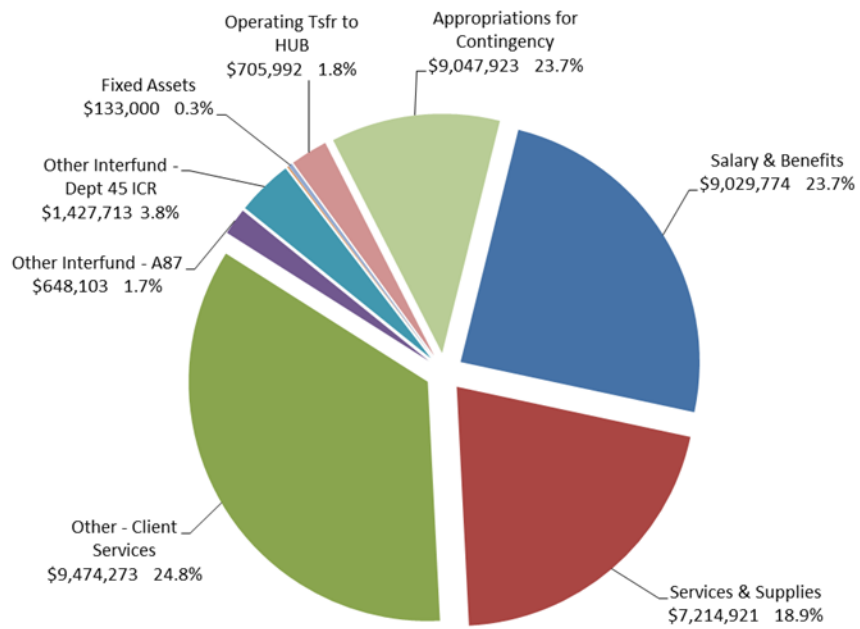
- Most funding coming into Behavioral Health is tied to delivery of services for specified programs.
- Base funding levels for individual counties are now set for 2011 Realignment.
- The County budgets full use of fund balance on the revenue side and an appropriation for contingencies on the expense side to allow flexibility throughout the year.
- When the economy slows down and sales tax receipts drop statewide, we will experience a reduction in 1991 & 2011 Realignment.

Specialty Mental Health Services

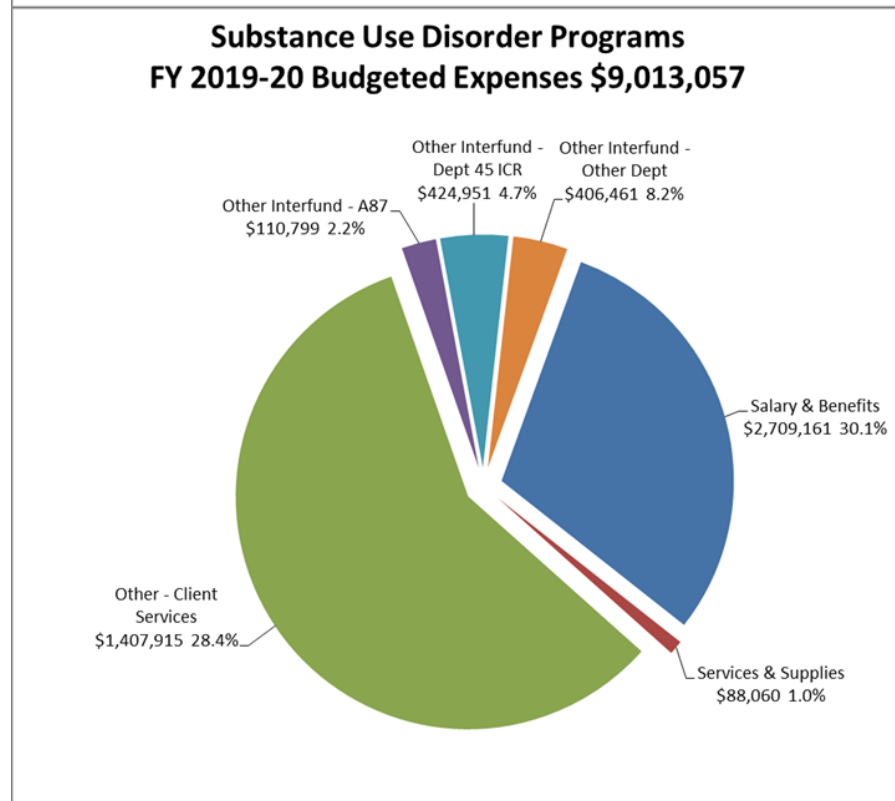
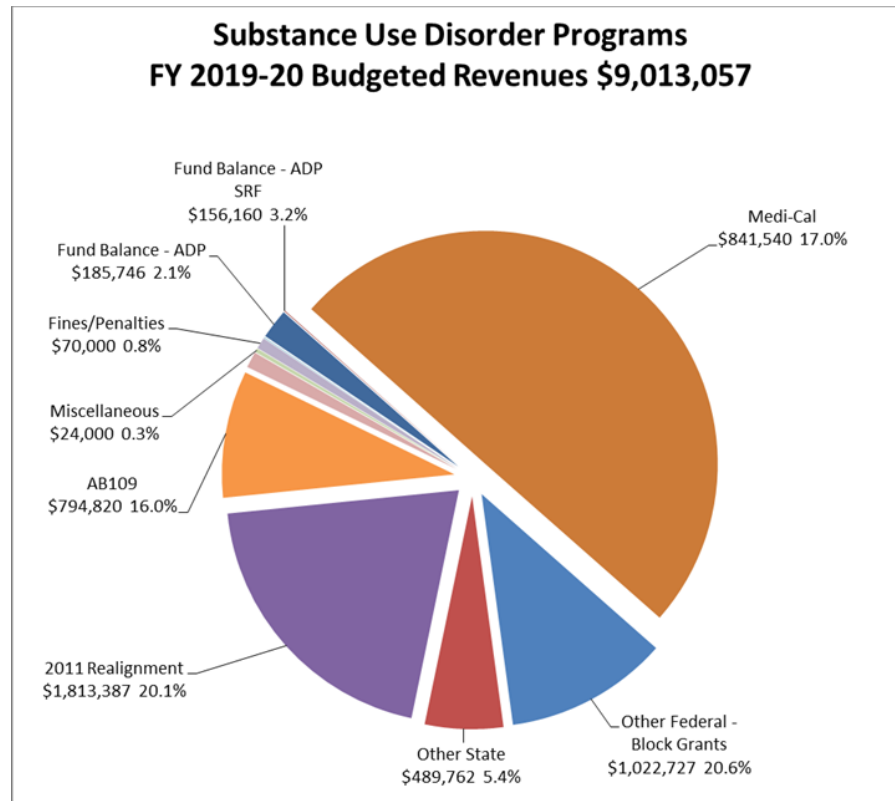


- MHSA Revenues are paid at an estimated rate throughout the year, and a true up occurs in the July/August timeframe. The true up can either greatly increase or decrease revenues received for the year.
- When the economy slows and California millionaires' income levels drop, MHSA revenues will likewise drop.

**Specialty Mental Health Services
FY 2019-20 Budgeted Expenses \$37,667,435**



Substance Use Disorder Programs



PROGRAM SPOTLIGHT

Mental Health Services Act (MHSA)

Timeline and Community Program Planning Process Update

January 22, 2020
Behavioral Health Commission Meeting



FY 19/20 ACTIVITY	JUL	AUG	SEPT	OCT	NOV	DEC	JAN	FEB	MAR	APR	MAY	JUN
1 CPPP	Informal		Formal					Informal				
2 Technical Input												
3 Develop Draft												
4 Comment Period / Hearing												
5 Draft Proposed Final												
6 Board of Supervisors												
6a MHSOAC (approximate)												
FY 20/21 ACTIVITY	JUL	AUG	SEPT	OCT	NOV	DEC	JAN	FEB	MAR	APR	MAY	JUN
6b MHSOAC (approximate, if needed)												
7 Implement												
8 Evaluate		Data from Prior Fiscal Year							Ongoing			

2. Gather Technical Input:

- Legal Requirements
- MHSA Team
- HHSA Fiscal Team
- Department of Health Care Services (DHCS)
- Mental Health Services Oversight and Accountability Commission (MHSOAC)

ONGOING

3. Develop Draft Plan

- MHSA Team
- HHSA Fiscal Unit

NOW

Through
February 29

4. Comment Period / Public Hearing

- MHSA Stakeholders
- Behavioral Health Commission
- General Public
- Providers

**NEXT
STEP**

Public Comments
Approximately
March 1 - March 30

Public Hearing
April 22

CASELOAD AND NEW SERVICE REQUEST DATA

Unduplicated Caseload as of December 2019

Children's Outpatient South Lake Tahoe	Clients	Children's Outpatient West Slope	Clients	Total
TAY	14	TAY	26	40
Clinic*	1	Clinic*	2	3
Contractor: Sierra Child & Family Services (SCF)**	31	Contractor: Sierra Child & Family Services (SCF)**	78	109
Contractor: Tahoe Youth & Family (TY)**	0	n/a		0
		Contractor: Summitview (SV) **	77	77
		Contractor: New Morning (NM)**	21	21
Contractor: Stanford Youth Solutions (SYS)**	1	Contractor: Stanford Youth Solutions (SYS)**	14	15
Subtotal Children's	47	Subtotal Children's	218	265

Adult Outpatient South Lake Tahoe	Clients	Adult Outpatient West Slope	Clients	Total
Clinic	79	Clinic	210	289
ICM/FSP	14	ICM/FSP	49	63
Subtotal Adults	93	Subtotal Adults	259	352

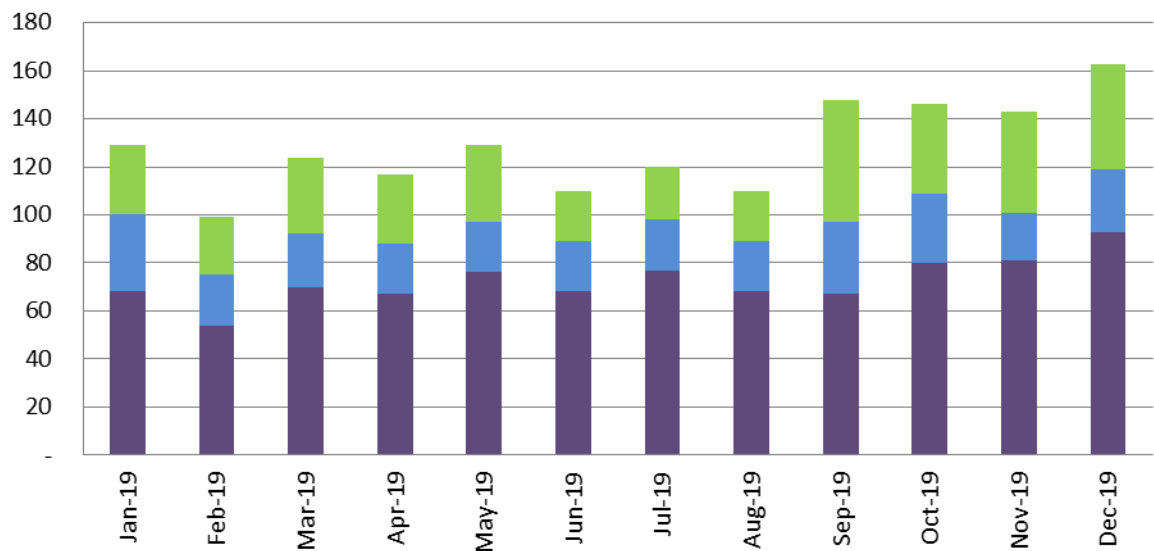
Total South Lake Tahoe	140	Total West Slope	477	617
-------------------------------	------------	-------------------------	------------	------------

* Children who are seen by the Behavioral Health Division only (no Contracted Providers)

** May include children who are seen by the Behavioral Health Division's Psychiatrist

New Service Request Trends

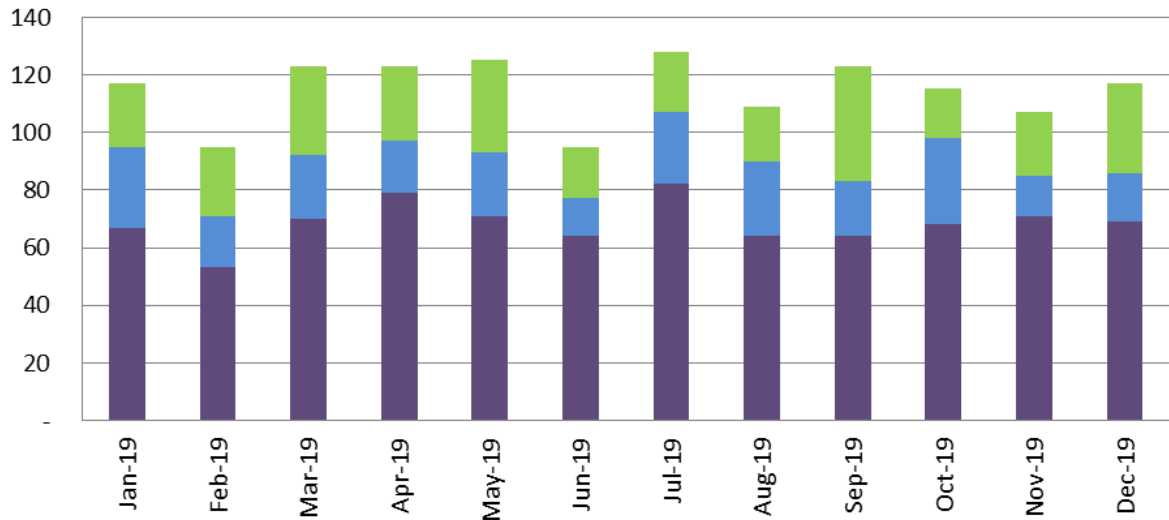
Prior 12 Month Period New Requests for Service



	Jan-19	Feb-19	Mar-19	Apr-19	May-19	Jun-19	Jul-19	Aug-19	Sep-19	Oct-19	Nov-19	Dec-19
Children	29	24	32	29	32	21	22	21	51	37	42	44
TAY	32	21	22	21	21	21	21	21	30	29	20	26
Adult	68	54	70	67	76	68	77	68	67	80	81	93

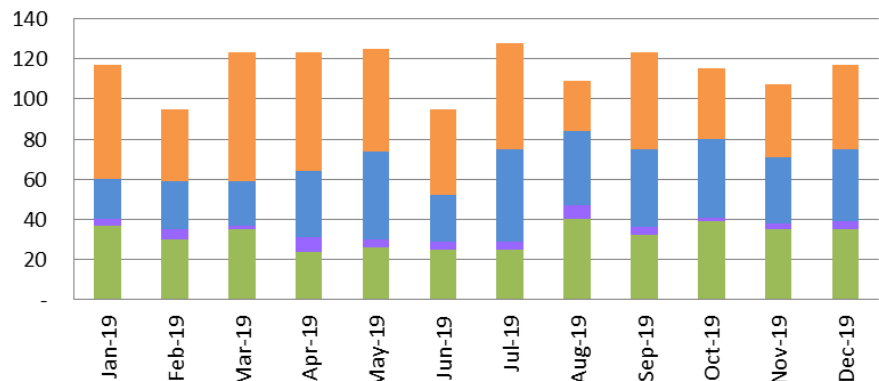
Discharged Service Request Trends

**Prior 12 Month Period Discharged Requests for Service
(by Age)**



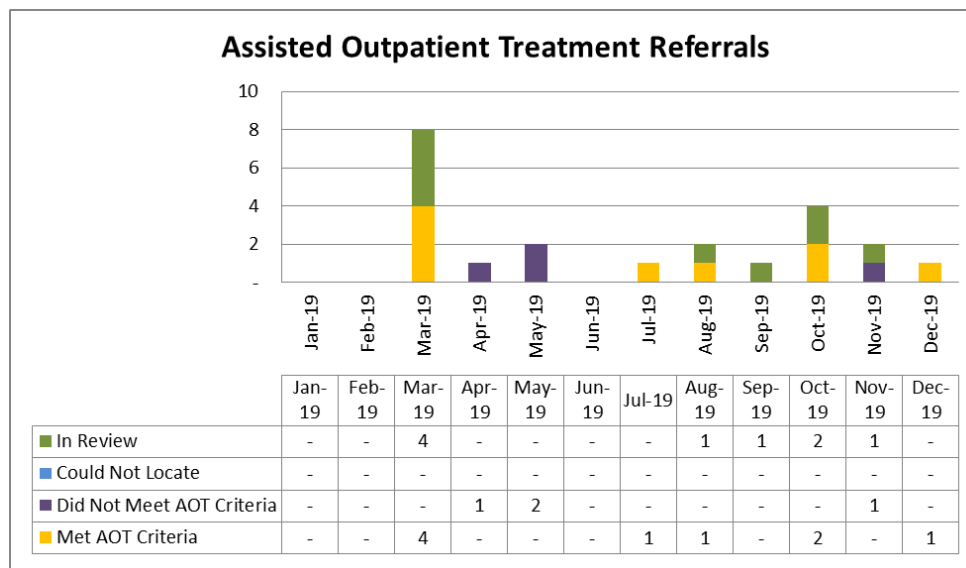
	Jan-19	Feb-19	Mar-19	Apr-19	May-19	Jun-19	Jul-19	Aug-19	Sep-19	Oct-19	Nov-19	Dec-19
Children	22	24	31	26	32	18	21	19	40	17	22	31
TAY	28	18	22	18	22	13	25	26	19	30	14	17
Adult	67	53	70	79	71	64	82	64	64	68	71	69

**Prior 12 Month Period Discharged Requests for Service
(by Disposition)**



	Jan-19	Feb-19	Mar-19	Apr-19	May-19	Jun-19	Jul-19	Aug-19	Sep-19	Oct-19	Nov-19	Dec-19
Other	57	36	64	59	51	43	53	25	48	35	36	42
Does Not Meet Medical Necessity	20	24	22	33	44	23	46	37	39	39	33	36
To Other BH Provider	3	5	2	7	4	4	4	7	4	2	3	4
To BHD OP Services	37	30	35	24	26	25	25	40	32	39	35	35

Assisted Outpatient Treatment: (Nicole Cable)



Disposition of Referrals:

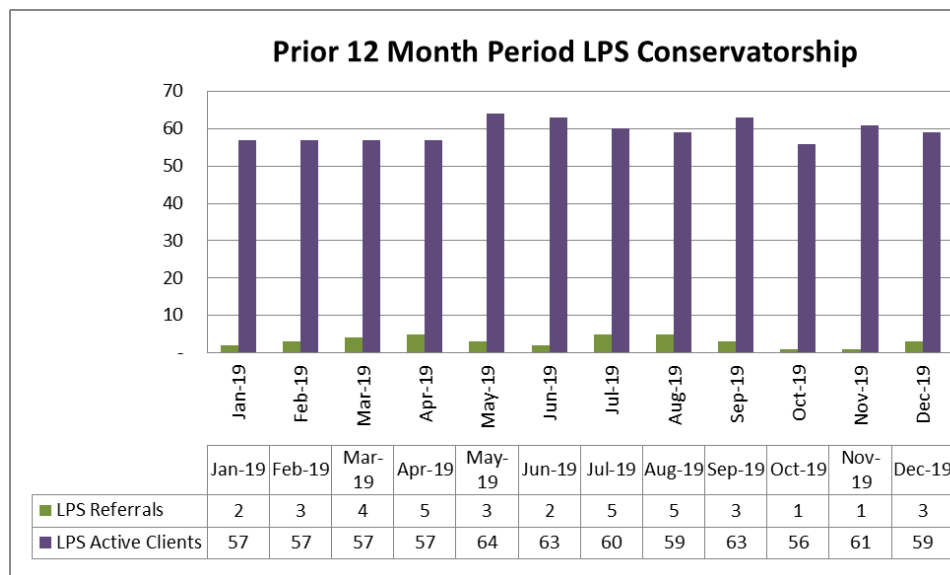
0 did not meet program criteria,
1 met initial program criteria,
2 individuals voluntarily accepted outpatient services,
0 individuals to proceed with the AOT process,
0 applications in review process

Discharged AOT clients:

1 clients discharged:
1 to a lower level of service,
0 out of services

There are currently **2** AOT clients receiving services voluntarily.

LPS Conservatorship: (Nicole Cable)



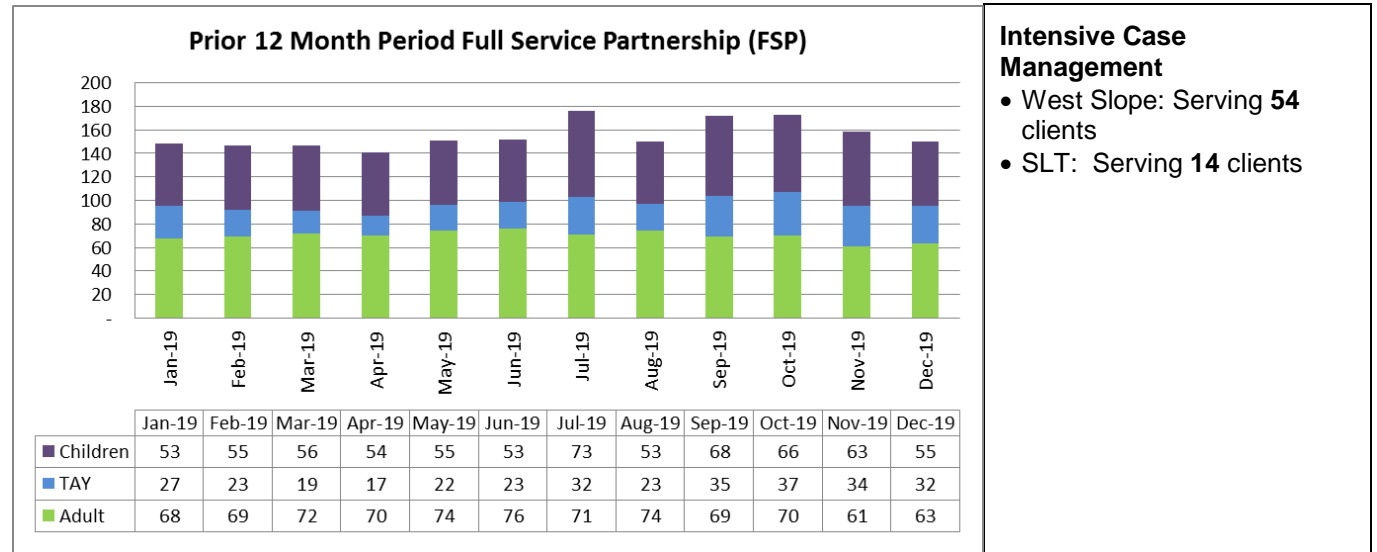
LPS Active Clients:

59 LPS Conservatorships
2 Temporary Conservatorships

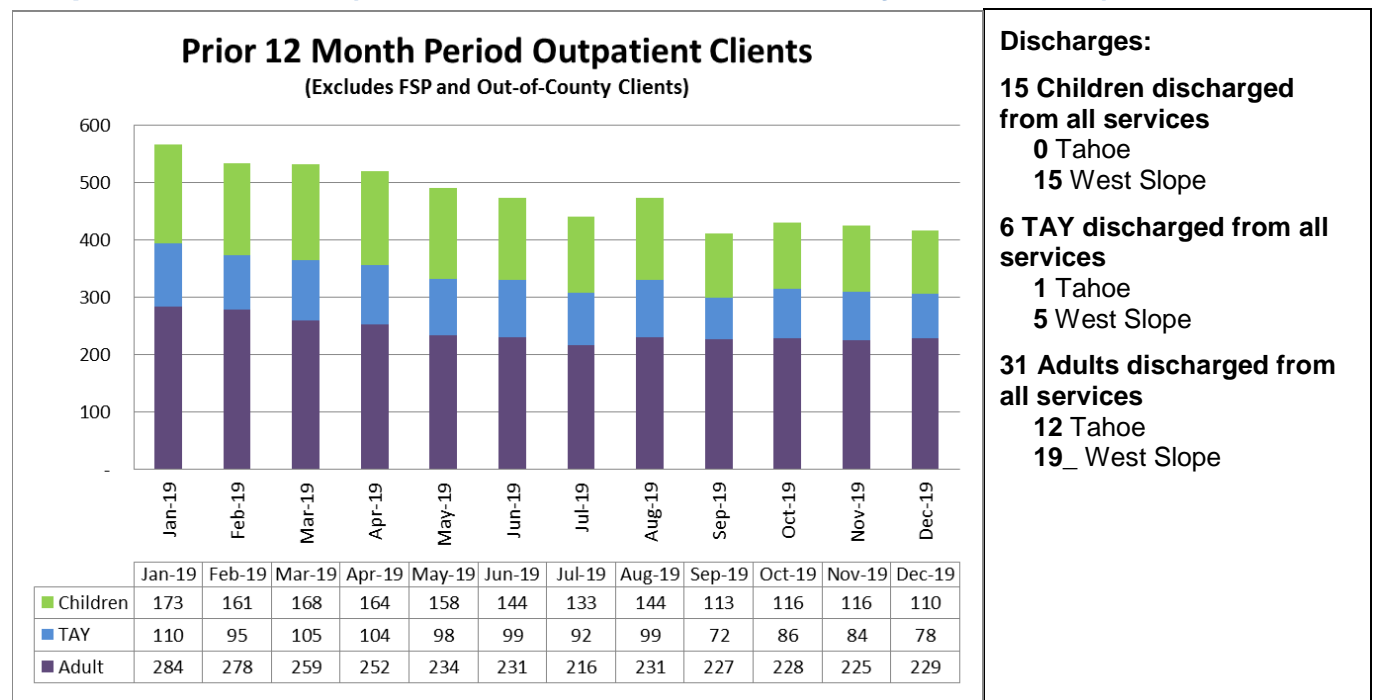
LPS Terminations:

4 LPS Terminations
1 Pending LPS Terminations

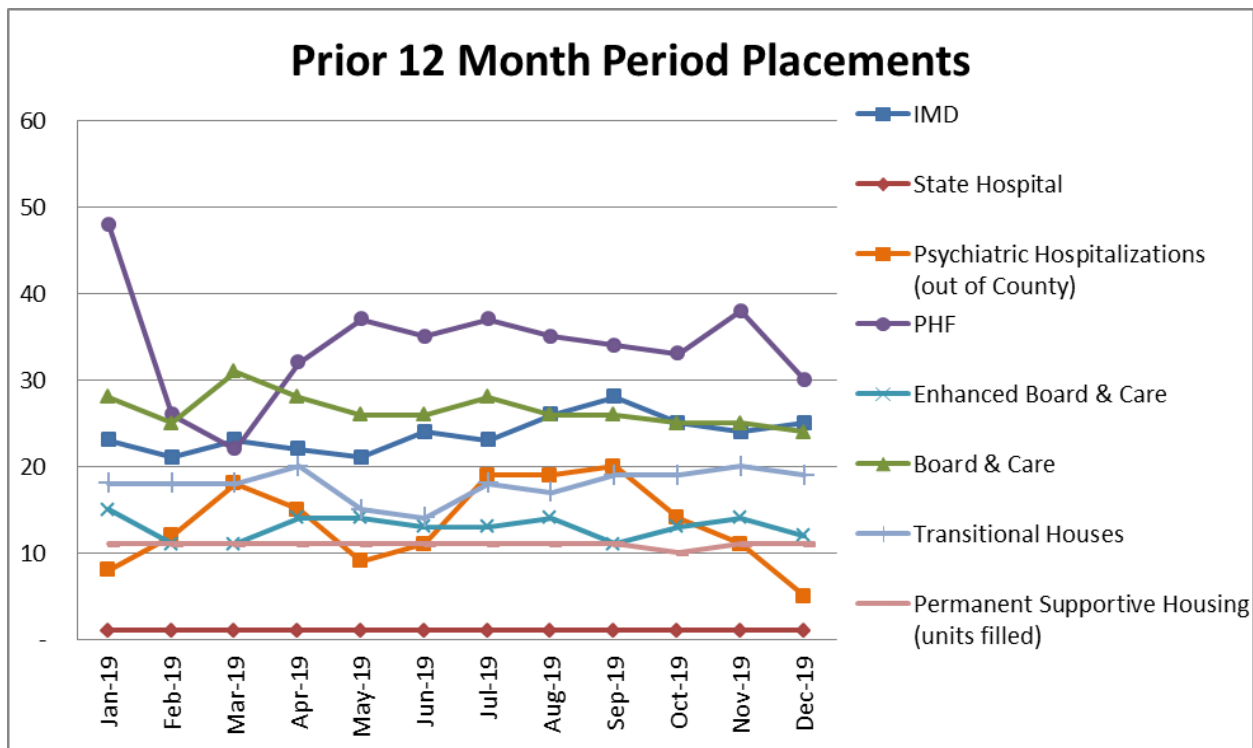
Full Service Partnership (FSP) and Intensive Case Management (ICM) (Nicole Cable and Sabrina Owen)



Outpatient Services (excludes FSP and Out-of-County Placements)



PLACEMENTS



Board and Care / IMDs / Secure Placements (Nicole Cable)

- **25** IMD beds
- **1** State Hospital
- **12** Enhanced Board and Care beds
- **24** Board and Care
- **Total:**
 - **58** Out of County Placements
 - **4** In County Placements

Transitions Treatment Program (Nicole Cable / Sabrina Owen)

- **WS:** 17 of 18 beds filled:
 - T1 **0** openings,
 - T2 **1** Female openings,
 - T3 **0** Male openings,
 - T4 **0** openings
- **SLT:** 2 of 6 beds filled:
 - T1 **4** openings

Permanent Supportive Housing (Heather Longo / Sabrina Owen)

Trailside Terrace

Clients receive services from the Wellness and Recovery team or from community based supports

- **5** of 5 units occupied
- Wait List:
 - 1 bedroom: 5
 - 2 bedroom: 6
 - 3 bedroom: 1

The Aspens at South Lake

Clients receive ICM team coverage

- **6** of 6 units occupied
- Wait List: unknown
 - This development is a floating unit configuration based on household size rather than a specific number of apartments for each number of bedrooms

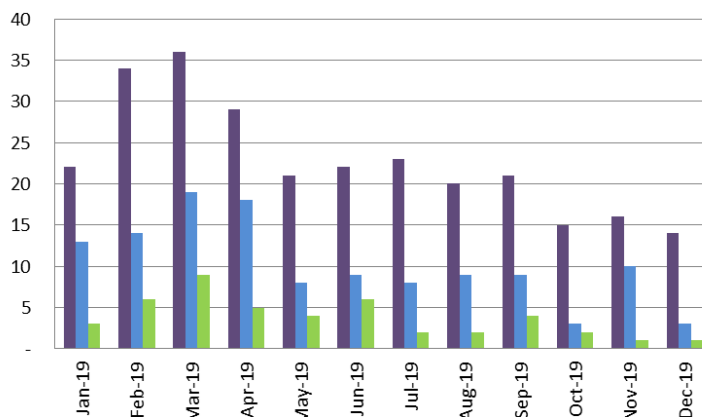
Psychiatric Health Facility (Nicole Cable)

- There were **30** Admissions; **15** Admissions were El Dorado County residents and **15** were Out of County residents.
- There were **18** El Dorado County residents discharged; **13** to Home with Support, **0** to Home without support, **2** MHRC/IMD, **0** Board and Care, **0** to ICM T-House, **2** to Shelter, **1** to Other, and **0** to Emergency Department.
- Upon discharge, **18** El Dorado County residents were insured and **0** El Dorado County residents were pending insurance.
- There were **0** Seclusion Episodes, **1** Physical Restraint Episodes (**2** minutes), **3** Assaults (**4** clients), **0** Elopements, **0** Medication Errors (**0** medication errors with no patient involvement), Client Surveys **20**
- There were **0** denials of El Dorado County referrals: N/A
- Average daily census was **10.61** (range **8-13**) with **10.44** average length of stay of days.
- Concurrent Reviews resulting in no medical necessity found: **0**

CRISIS SERVICES

Psychiatric Emergency Services (PES) (Sabrina Owen and Angie Larrigan)

Prior 12 Month Period Psychiatric Emergency Services - SLT



	Jan-19	Feb-19	Mar-19	Apr-19	May-19	Jun-19	Jul-19	Aug-19	Sep-19	Oct-19	Nov-19	Dec-19
■ Crisis Assessments	22	34	36	29	21	22	23	20	21	15	16	14
■ Hospitalizations	13	14	19	18	8	9	8	9	9	3	10	3
■ Referrals to Substance Use Treatment	3	6	9	5	4	6	2	2	4	2	1	1

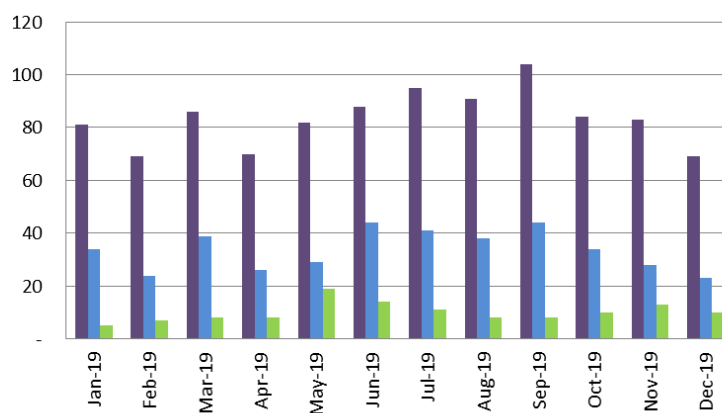
Crisis Assessments for Open Clients:

- SLT: 2
- West Slope: 16

Hospitalizations of Open Clients

- SLT: 0
- West Slope: 6

Prior 12 Month Period Psychiatric Emergency Services - WS



	Jan-19	Feb-19	Mar-19	Apr-19	May-19	Jun-19	Jul-19	Aug-19	Sep-19	Oct-19	Nov-19	Dec-19
■ Crisis Assessments	81	69	86	70	82	88	95	91	104	84	83	69
■ Hospitalizations	34	24	39	26	29	44	41	38	44	34	28	23
■ Referrals to Substance Use Treatment	5	7	8	8	19	14	11	8	8	10	13	10

Crisis Intervention Teams (CIT) (Nicole Cable and Sabrina Owen)

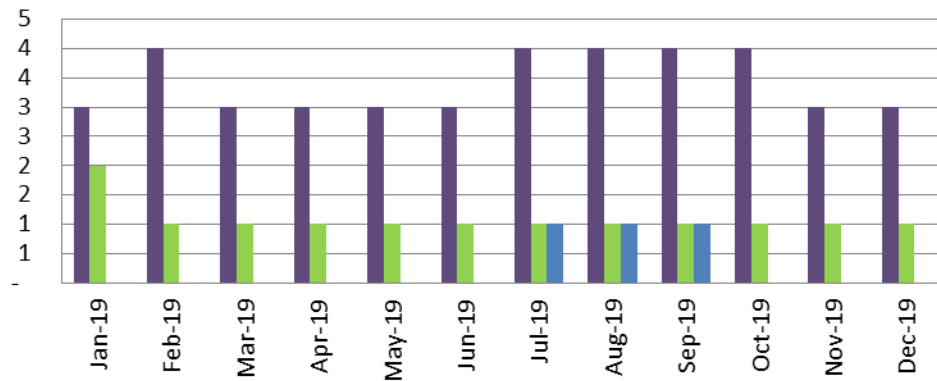
- **SLT:** MDT meeting for December was cancelled
- **WS:** MDT meeting was attended by NAMI, California Health and Wellness Representative, HOT, PERT, APS, Jail Sheriff, DA office, Parole, Probation and Behavioral Health. We have entered about 10 clients into Care Manager Software that are discussed during the meeting for follow up notes to document future contacts.
- **PERT:** Two (2) Clinicians are trained and assigned to PERT on specific days and a 3rd Clinician is being trained to ensure PERT trained Clinicians are available to partner with EDSO Deputy Whitlock to provide PERT services. PERT data is again being tracked and will be further reported next month.

Contacts for Month	19
Safety Plans	16
PERT Involuntary Holds Written	3
Behavioral Health Outpatient Holds Written	0

JUSTICE SERVICES

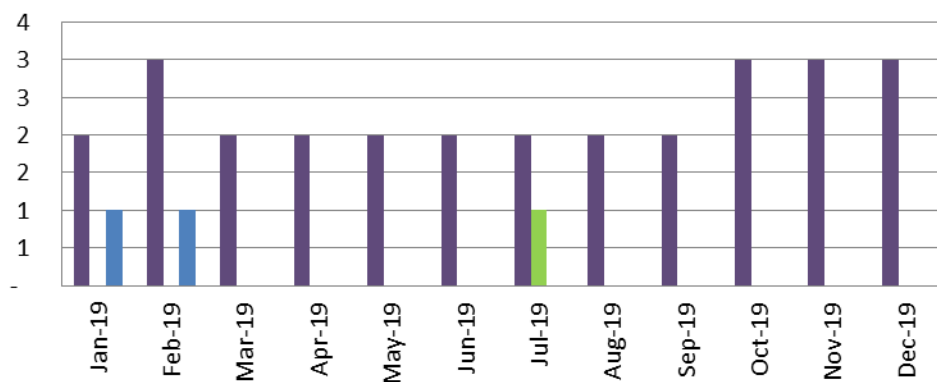
Behavioral Health Court (John Schumacher)

Prior 12 Month Period Behavioral Health Court - SLT



	Jan-19	Feb-19	Mar-19	Apr-19	May-19	Jun-19	Jul-19	Aug-19	Sep-19	Oct-19	Nov-19	Dec-19
Active Participants	3	4	3	3	3	3	4	4	4	4	3	3
Sober Living	2	1	1	1	1	1	1	1	1	1	1	1
Residential Substance Use	-	-	-	-	-	-	1	1	1	-	-	-

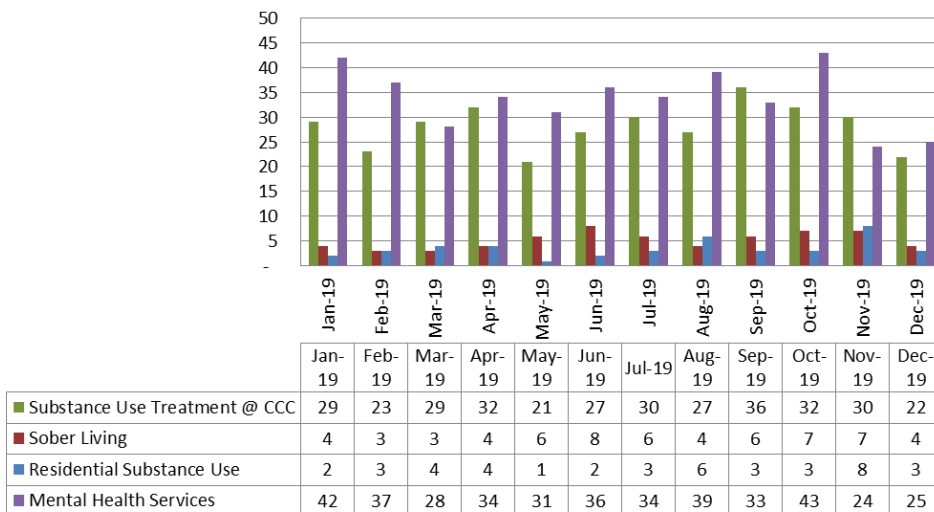
Prior 12 Month Period Behavioral Health Court - WS



	Jan-19	Feb-19	Mar-19	Apr-19	May-19	Jun-19	Jul-19	Aug-19	Sep-19	Oct-19	Nov-19	Dec-19
Active Participants	2	3	2	2	2	2	2	2	2	3	3	3
Sober Living	-	-	-	-	-	-	1	-	-	-	-	-
Residential Substance Use	1	1	-	-	-	-	-	-	-	-	-	-

AB 109 (John Schumacher)

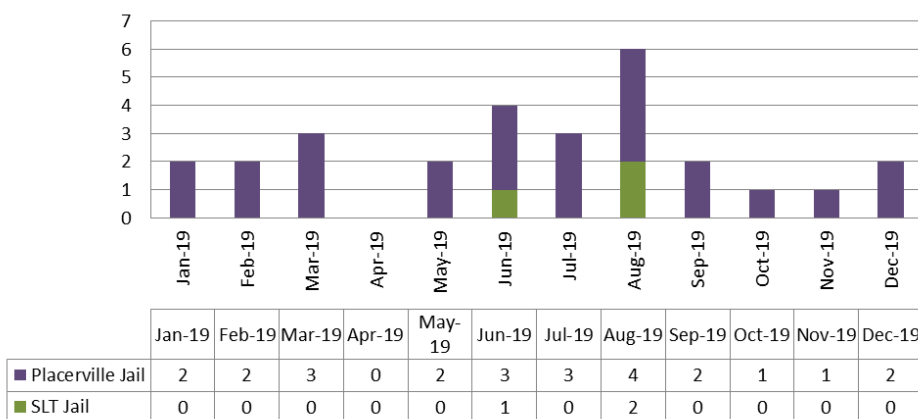
**Prior 12 Month Period AB 109 Client Services
at the Community Corrections Center**



- **9** clients are receiving Substance Use Education services in the South Lake Tahoe jail.
- On hold at this time - 0 clients are receiving Substance Use Disorder treatment in Placerville Jail.
- **2** client is receiving treatment from a contracted community provider in SLT.
- **24** clients are receiving treatment from a contracted community provider in Placerville.

Mental Health Clients in Jail (Moriah Weldy)

Prior 12 Month Period Mental Health Clients in Jail



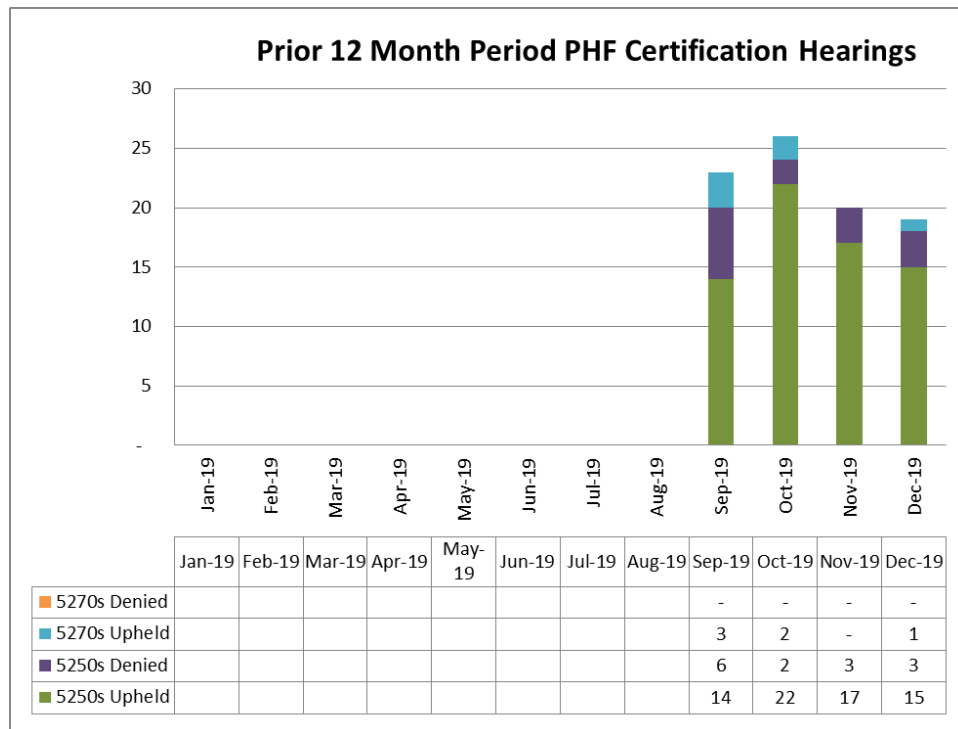
Count of Behavioral Health's existing clients that were receiving Specialty Mental Health Services at the time of their incarceration in the Placerville or SLT Jails only.

Restoration of Competency (Nicole Cable)

- **1** Outpatient ROC referrals
 - **0** Jail ROC referral
 - **3** client receiving ROC Outpatient services
 - **0** client receiving ROC Inpatient services (CPT)
- ROC Complete with client above, client found restored and will voluntarily engage in mental health services pending release from jail.

QUALITY ASSURANCE & PATIENT RIGHTS

Patients' Rights Advocate (Christina Hammel)



Certification hearings are held at the PHF on Mondays and Thursdays (except holidays).

- 20 Certification Notices were served.
- 1 client discharged prior to the hearing date
- 0 clients converted to voluntary prior to the hearing
- 19 hearings were held

Quality Improvement/Utilization Review (Angelina Larrigan / Ren Strong)

- The UR team has identified areas for improvement in adult outpatient documentation and continues to provide ongoing consultation with practitioners.
- The UR has identified the employees who have not received the new documentation training and will be providing them with documentation training.
- Refresher documentation training will also be provided.
- The UR team has developed a concurrent review worksheet to use for all inpatient psychiatric health facilities. Implementation is anticipated to be mid-January 2020.
- The UR team has developed a comprehensive inpatient chart review worksheet for use with inpatient hospitalization charts. Implementation is anticipated to be February 2020.
- The UR team has implemented an evidenced-based safety plan and an electronic version has been created in Avatar. Implementation is anticipated for early January 2020.
- Quality Improvement is beginning preparations for the MHP's External Quality Review Organization (EQRO) scheduled for March.

Grievances/Appeals/Hearings (Ren Strong/Christina Hammel)

Month Filed	Month Completed	Type	Topic	Location	Outcomes (Appeals / Hearings Only)
09/2019	10/2019	Grievance	Staff Behavior Concern	Tahoe	--
10/2019	12/2019	Grievance	Quality of Care (did not receive a phone call from staff)	Tahoe	--
12/2019	12/2019	Grievance	Lack of Response from department other than HHSA	Tahoe	--
12/2019		Grievance	Quality of Care-Treatment issues or concerns	West Slope	--
12/2019		Grievance	Quality of Care- accessibility of information in a preferred language Staff behavior concern	PHF	--
12/2019		Grievance	Staff Behavior Concern	PHF	--
12/2019		Grievance	Quality of Care- Expressed dissatisfaction	Tahoe	--
12/2019		Grievance	Quality of Care- Treatment issues or concerns from a division other than Behavioral Health within HHSA Quality of care- Treatment issues or concerns at Behavioral Health	West Slope	--
12/2019		Grievance	Staff Behavior Concern	PHF	--
12/2019		Grievance	Quality of Care- Treatment issues or concerns	PHF	--
11/2019		Grievance	Other	PHF	--
12/2019		Grievance	Quality of Care- Medication concern	West Slope	--
12/2019	12/2019	Expedited Appeal	Request for Services - Beneficiary did not meet medical necessity	West Slope	Original Decision Upheld

PROGRAM ACTIVITY UPDATES

ALCOHOL AND DRUG SERVICES / SUBSTANCE USE DISORDERS (Salina Drennan)

Tahoe:

- New SUD treatment groups have been added to the schedule and are available for DMC ODS beneficiaries to access. New SLT SUDs flyer in development.

West Slope:

- There is a new contract in process for residential DMC ODS services. The contractor is WellSpace in Sacramento. SUDs has had a good relationship with this provider and they serve the co-occurring client well. We are hopeful the contract will be approved and finalized soon. A new Placerville SUDs flyer in development.

MENTAL HEALTH SERVICES ACT (MHSA) (Heather Longo/Tami Smith)

- The MHSA team participated in the Quarterly Quality Improvement Committee meeting.
- The MHSA team participated in the Quarterly Cultural Competence training provided by South Lake Tahoe Family Resource Center.
- The MHSA team participated in various conference calls, webinars, and meetings related to items of interest to MHSA.
- The Community Program Planning Process continued in December and the next Three Year Program and Expenditure Plan is beginning to be drafted.

OUTPATIENT SERVICES

(Sabrina Owen (SLT); Doris Jones and Nicole Cable (WS))

Wellness Center Activities:

Tahoe:

- By request we converted our Saturday Friends & Fitness clients only group (targeting reducing depression through exercise, social interaction and sunlight) to a Wellness group. There has also been interest in having a music group and more diversity in the food prepared in wellness. We are planning these changes for the new year.

West Slope:

- Wellness Center will be open Monday, Tuesday, Thursday, Friday [Closed Wednesdays] beginning in January 2020.
- Housing Group has been added to educate clients about all aspects of locating, applying for, moving to, settling in and living in new housing, local resources, legal documents/assistance, rights and responsibilities, budgets, shared housing, considering and finding housemates, shared housing rules, communication skills/styles and conflict resolution.

ICM Activities:

Tahoe:

- Clients continue to learn skills to manage their diagnosis' and life stressors to achieve their personal goals.

West Slope:

- Clients participated in and reported enjoying the weekend outing to view Christmas Lights. The clients continue to demonstrate the cooking skills learned by cooking new recipes and asking for staff support when needed.

Children's Services (Angie Larrigan)

- Children's Placement Committee was canceled in December. Despite cancellation, Education, Child Welfare, Probation and Behavioral Health continued collaboration and were able to meet all placement needs.
- Monthly Children's SMHS Contract Provider Meetings continue to take place and are well attended by Sierra Children and Family Services, New Morning Youth and Family Services, Summitview Child and Family Services, and Stanford Youth Solutions staff. The meetings focus on quality assurance, utilization review, resource sharing, and networking.
- A new focus for children's services surrounds Assembly Bill (AB) 2083. The intent of AB 2083 is to build upon the current Continuum of Care Reform implementation effort by developing a coordinated, timely, and trauma-informed system-of-care approach for children and youth in foster care who have experienced severe trauma, implementing related memoranda of understanding at the County level, and establishing a joint interagency resolution team on the state level to assist counties in serving those children and youth. The Children's Placement Committee will collaborate at the next meeting in January surrounding the newly issued guidance to enhance care coordination for the children and youth in EDC.
- The EDC BOS approved a new Children and Youth Commission in late December. There is much collaboration between the various child and youth serving systems to prepare for this new official group.

TAY DBT/FEP Program (Sabrina Owen and Lesly Van Sloten)

Tahoe

- There are several active DBT groups at STHS and Tallac. Some participants got together over the winter school break for a "stress management activity". Ongoing training is being provided for the FEP team in FEP advancements and recommendations for providing services in a rural community. There have been several new TAY referrals and engagement with this demographic is still challenging. .

West Slope:

- The County is reviewing responses to the RFP for DBT and FEP services on the West Slope.

ADULT OUTPATIENT GROUP SCHEDULES

WS Adult Outpatient Services

Monday	
BHC/Wellness - Check In Group	10:30 am - 11:30 am
Anger Management	1:15 pm - 2:00 pm (Open to clients)
Ted Talks	1:15 pm - 2:00 pm (Wellness/Peer Led)
Exercise Group	2:00 pm - 3:00 pm (Wellness/Peer Led)
Basic Conversation Skills	2:00 pm - 3:00 pm (Wellness)
Stress Reduction	3:00 pm - 4:00 pm (Open to clients)
Play a Game Group	3:00 pm - 4:00 pm (Wellness)
Life Skills	3:00 pm - 4:00 pm
Tuesday	
Dried Mangoes Rehearsal Music Group	10:00 am - 11:00 am (Wellness)
Ted Talks	1:15 pm - 2:00 pm (Wellness/Peer Led)
Women's Co-Occurring Recovery Group	1:15 pm - 2:45 pm (ADP)
Art Group with Jan from NAMI	1:30 pm - 3:00 pm (Wellness/Peer Led)
Healthy Pleasures	1:30 pm - 2:30 pm (Staff and Peer Led)
Job Connections Group	1:30 pm - 3:30 pm (Wellness)
Smoking Cessation	3:00 pm - 4:00 pm (Wellness)
Wednesday	
DBT Skills Group - Skills Training	10:00 am - 12:00 pm
Transitional Housing Independent Living Skills	12:00 pm - 1:00 pm
Dual Recovery Anonymous - Peer Support Group	1:00 pm - 2:00 pm (Wellness/Peer Led)
Ted Talks	1:15 pm - 2:00 pm (Wellness/Peer Led)
Self-Care/ADLS Group	1:30 pm - 3:30 pm (Wellness)
Soothing Techniques	2:00 pm - 3:00 pm (Wellness)
Anger Management Group	2:00 pm - 3:00 pm
MH Peer Leadership Academy	2:00 pm - 4:00 pm
Thursday	
Seeking Safety Group	10:30 am-12:00 pm
Improv Music Group	10:00 am - 11:00 am (Wellness/Peer Led)
Women's Co-Occurring Recovery Group	1:15 pm - 2:45 pm (Seeking Safety, ADP)
Healthy Pleasures	1:30 pm - 2:30 pm (Wellness)
TAY DAY	2:00 pm - 4:00 pm (Wellness)
Anxiety and Depression Group	2:30 pm - 3:30 pm (Wellness/Peer Led)
Friday	
DBT Group - Skills Training	10:00 am - 12:00 pm (Closed)
Men's Co-Occurring Recovery Group	10:15 am - 11:45 am (ADP)
Ted Talks	1:30 pm - 2:00 pm (Wellness/Peer Led)
DBT Group - Skills Training	1:30 pm - 2:30 pm
Cinema Club	2:00 pm - 4:00 pm (Wellness)
Mindfulness Group (On hold)	2:45 pm - 3:30 pm (Wellness)

SLT Adult Outpatient Services

Monday	
Co-Occurring DBT	11:00 am - 12:00 pm
DBT - Mindfulness (modified)	1:00 pm - 2:30 pm
Women's Group	1:00 pm - 2:30 pm
DBT - Skill Building	1:30 pm - 2:30 pm (Wellness)
TED Talks - Information & Conversation	3:00 pm – 3:30 pm (Wellness)
Current Events Discussion	3:35 pm – 4:00 pm (Wellness)
Tuesday	
DBT - Mindfulness	1:00 pm - 2:30 pm
Health Awareness/Cooking	1:30 pm - 2:30 pm (Wellness)
Peer Leadership	3:00 pm - 3:30 pm (Wellness)
Just One Thing (Mindfulness)	3:35 pm - 4:00 pm (Wellness)
Wednesday	
DBT – Emotional Regulation	10:30 pm - 12:00 pm
DBT – Interpersonal Effectiveness	1:00 pm - 2:30 pm
Recovery Through Art	1:30 pm - 2:30 pm (Wellness)
Refuge Recovery	3:00 pm - 3:30 pm (Wellness)
Healthy Relationship Skills	3:35 pm - 4:00 pm (Wellness)
Thursday	
Co-occurring Women's Group	10:30 am - 12:00 pm (ADP)
DBT - Distress Tolerance	1:00 pm - 2:30 pm
Community Excursions	1:00 pm – 4:00 pm (Wellness)
Movement Mindfulness	1:30 pm - 2:30 pm (Wellness)
Stress Management/Coping Skills	3:00 pm - 3:30 pm (Wellness)
Social Awareness	3:35 pm - 4:00 pm (Wellness)
Friday	
BHC Group	12:30 pm - 1:00 pm
Volunteering	1:00 pm - 4:00pm (Wellness)
Anger Management	1:30 pm - 2:30 pm (Wellness)
Leisure Skills	3:00 pm – 3:30 pm (Wellness)
Paths to Recovery (Book Study)	3:35 pm - 4:00 pm (Wellness)
Men's Wellness	2:30 pm - 4:00 pm
Saturday	
Friends 'n Fitness	11:00 am - 12:30 pm

INITIALS & DEFINITIONS

Initials	Definition
AB	Assembly Bill
ACEs	Adverse Childhood Experiences
ADL	Activities of Daily Living
ADP	Alcohol and Drug Programs
AMFT	Associate Marriage and Family Therapist
AOT	Assisted Outpatient Treatment
APCC	Associate Professional Clinical Counselor
APS	Adult Protective Services
ARF	Adult Residential Facility
B&C	Board and Care
BHC	Behavioral Health Court
BHD	Behavioral Health Division (formerly the Mental Health Division)
BOMUSD	Black Oak Mine Unified School District
BSCC	Board of State and Community Corrections
CalMHSA	California Mental Health Services Authority
CalQIC	California Quality Improvement Coordinators
CANS	Child and Adolescent Needs and Strengths
CBHDA	County Behavioral Health Directors Association of California
CBO	Community Based Organization
CBT	Cognitive Behavior Therapy
CCC	Community Corrections Center or California Conservation Corps
CCP	Community Corrections Partnership
CCR	Continuum of Care Reform
CDCR	California Department of Corrections and Rehabilitation
CDSS	California Department of Social Services
CFMG	California Forensic Medical Group
CFR	Code of Federal Regulations
CFT	Children and Family Teams
CFTN	Capital Facilities and Technology Needs
CHP	California Highway Patrol
CIT	Crisis Intervention Team
CMS	Centers for Medicare & Medicaid Services
CPP	Community Planning Process
CPS	Child Protection Services
CPT	California Psychiatric Transitions
CSS	Community Services and Supports
CWS	Child Welfare Services
DBT	Dialectical Behavior Therapy
DHCS	Department of Health Care Services (California)
DMC-ODS	Drug Medi-Cal Organized Delivery System
Dx	Diagnosis
ED	Emergency Department
EDC	El Dorado County
EDCMH	El Dorado County Mental Health
EDCOE	El Dorado County Office of Education
EDCSO	El Dorado County Sheriff's Office
EDSO	El Dorado Sheriff's Office
EDCVC	El Dorado Community Vision Coalition
EH	Extra Help
EHR	Electronic Health Record

EPSDT	Early and Periodic Screening, Diagnosis and Treatment
EQRO	External Quality Review Organization
ER	Emergency Room
FEP	First Episode Psychosis
FSP	Full Service Partnership
FTE	Full-Time Equivalent
FY	Fiscal Year
HHSA	Health and Human Services Agency
HOT	Homeless Outreach Team
Hubs	Reference to the Innovation Program “Community-Based Engagement and Support Services”, also called “Community Hubs”
IA	Intergovernmental Agreement
ICC	Intensive Care Coordination
ICM	Intensive Case Management
IHBS	Intensive Home-Based Services
IMD	Institution for Mental Disease (facility)
ITWS	Information Technology Web Services
Katie A.	<i>Katie A. vs. Bonta</i> Lawsuit and/or resulting programs/services
LCSW	Licensed Clinical Social Worker
LL	Laura’s Law
LOCUS	Level of Care Utilization System
LPCC	Licensed Professional Clinical Counselor
LPS	Lanterman Petris Short
LT	Limited Term
LTCC	Lake Tahoe Community College
MAR	Medication Administration Record
MDT	Multi-Disciplinary Team
M-F	Monday through Friday
MH	Mental Health
MHD	Mental Health Division
MHRC	Mental Health Rehabilitation Center (facility)
MHSA	Mental Health Services Act
MHSOAC	Mental Health Oversight and Accountability Commission
MHSUDS	Mental Health and Substance Use Disorder Services, a division of the State’s Department of Health Care Services (DHCS)
MHW	Mental Health Worker
MIOCR	Mentally Ill Offender Crime Reduction
MOA	Medical Office Assistant
MOU	Memorandum of Understanding
MRT	Moral Reconciliation Therapy
NACT	Network Adequacy Certification Tool
NM	New Morning Youth & Family
NOABD	Notice of Adverse Benefit Determination
OAC	Mental Health Services Oversight and Accountability Commission, also MHSOAC
OP	Outpatient
PA	Physician Assistant
PATH	Projects for Assistance in Transition from Homelessness
PCP	Primary Care Physician
PD	Police Department
PEI	Prevention and Early Intervention
PERT	Psychiatric Emergency Response Team
PES	Psychiatric Emergency Services
PG	Public Guardian

PHF	Psychiatric Health Facility
PIP	Primary Intervention Program or Program Improvement Plan
POC	Plan of Correction
PPD	Placerville Police Department
PSC-35	Pediatric Symptom Checklist
QA/UR	Quality Assurance/Utilization Review
QI	Quality Improvement
QI/UR	Quality Improvement/Utilization Review
QIC	Quality Improvement Committee
RIF	Reduction in Force
RFI	Request for Information
RFP	Request for Proposal
RFQ	Request for Qualifications
ROI	Authorization for Release of Information
ROC	Restoration of Competence
RV	Remi Vista
SAMHSA	Substance Abuse and Mental Health Services Administration
SB	Senate Bill
SCF	Sierra Child & Family
SLT	South Lake Tahoe
SLTPD	South Lake Tahoe Police Department
SO	Sheriff's Office
STHS	South Tahoe High School
STRTP	Short-Term Residential Therapeutic Program
SUD	Substance Use Disorders
SV	Summitview Child & Family
SYS	Stanford Youth Solutions
T-House	Transitional Housing
TAY	Transitional Age Youth
TBD	To Be Determined
TCH	Tahoe Coalition for the Homeless
TFC	Therapeutic Foster Care
TYFS	Tahoe Youth and Family Services
Tx	Treatment
TY	Tahoe Youth and Family Services
UR	Utilization Review
VA	United States Department of Veterans Affairs
WET	Workforce Education and Training
WIA	Workforce Investment Act
WOIA	Workforce Innovations and Opportunities Act
WS	West Slope



42 CFR Part 2

Confidentiality

In the substance abuse field, confidentiality is governed by federal law [(42 U.S.C. § 290dd-2) and regulations (42 CFR Part 2)] that outlines under what limited circumstances information about the client's treatment may be disclosed, with and without the client's consent. 42 CFR Part 2 applies to all records relating to the identity, diagnosis, prognosis, or treatment of any patient in a substance abuse program that is conducted, regulated, or directly or indirectly assisted by any department or agency of the United States.

For more information about our services please go to our website:

<https://www.edcgov.us/Government/MentalHealth/Pages/SUD.aspx>

Do you need Substance Use Treatment?

The Substance Use Disorder Services program leads efforts in our community to prevent and reduce the impact of substance use disorders by developing, administering, and implementing evidence based approaches to youth prevention, treatment, and recovery programs in El Dorado County.

To Request Services

Call or Walk-In
929 Spring Street
Placerville, CA 95667
530-621-6290

24-Hour Access Line: 1-800-929-1955

El Dorado County



Health and Human Services Agency
**Drug Medi-cal Organized
Delivery System Services**

**24/7 Substance Use
Treatment Access Line
1-800-929-1955**



Placerville Office

929 Spring Street

Placerville, CA 95667

Phone: 530-621-6290

How Do I Know When I Need Help?

Many people have difficult times in life and may experience substance use problems. The most important thing to remember when asking yourself if you need professional help is to trust yourself.

If you are eligible for Medi-Cal, and you think you may need professional help, you should request an assessment from the County to find out for sure.



What Services are Offered?

- Local Outpatient Treatment Groups
- Residential Treatment
- Co-Occurring Disorders Counseling
- Recovery Support Services
- Case Management

Who is Eligible for Services?

El Dorado County residents enrolled in Medi-Cal are eligible to receive substance use treatment services through the Drug Medi-Cal Organized Delivery System.

Pregnant substance users and/or IV drug users have priority for admission to services

For more information regarding Medi-Cal enrollment and eligibility requirements, please contact HHSA-Social Services at: **(530) 642-7300**

I already have Medi-cal! How can I find out more about the SUD treatment services I may be eligible for?

You may request a copy of the DMC Beneficiary Handbook by contacting our office by phone at 530-621-6290 or walk-in. You may request a hard copy or an electronic copy to be emailed to you. The Beneficiary Handbook is also available online at: <https://www.edcgov.us/Government/MentalHealth/Pages/Access-to-Services.aspx>



What can I expect?

Our philosophy is to “meet the client where they’re at that.” We do not believe in a one-size-fits-all approach when it comes to treating substance abuse.

You will work together with your counselor to create an individualized treatment plan based upon a thorough assessment. Staff provides support throughout your treatment journey by providing a variety of treatment and recovery services. Ongoing recovery services are also available to help maintain your recovery after completion of treatment services.



42 CFR Part 2

Confidentiality

In the substance abuse field, confidentiality is governed by federal law [(42 U.S.C. § 290dd-2) and regulations (42 CFR Part 2)] that outlines under what limited circumstances information about the client's treatment may be disclosed, with and without the client's consent. 42 CFR Part 2 applies to all records relating to the identity, diagnosis, prognosis, or treatment of any patient in a substance abuse program that is conducted, regulated, or directly or indirectly assisted by any department or agency of the United States.

For more information about our services please go to our website:

[https://www.edcgov.us/Government/
MentalHealth/Pages/SUD.aspx](https://www.edcgov.us/Government/MentalHealth/Pages/SUD.aspx)

Do you need Substance Use Treatment?

The Substance Use Disorder Services program leads efforts in our community to prevent and reduce the impact of substance use disorders by developing, administering, and implementing evidence based approaches to youth prevention, treatment, and recovery programs in El Dorado County.

To Request Services

Call or Walk-in

1900 Lake Tahoe Blvd.
South Lake Tahoe, Ca 96150
530-621-6290

24-Hour Access Line: 1-800-929-1955

El Dorado County



Health and Human Services Agency
**Drug Medi-cal Organized
Delivery System Services**

**24/7 Substance Use
Treatment Access Line
1-800-929-1955**



South Lake Tahoe Office

1900 Lake Tahoe Blvd.

South Lake Tahoe, CA 96150

Phone: 530-621-6290

How Do I Know When I Need Help?

Many people have difficult times in life and may experience substance use problems. The most important thing to remember when asking yourself if you need professional help is to trust yourself.

If you are eligible for Medi-Cal, and you think you may need professional help, you should request an assessment from the County to find out for sure.



What Services are Offered?

- Local Outpatient Treatment Groups
- Residential Treatment
- Co-Occurring Disorders Counseling
- Recovery Support Services
- Case Management

Who is Eligible for Services?

El Dorado County residents enrolled in Medi-Cal are eligible to receive substance use treatment services through the Drug Medi-Cal Organized Delivery System.

Pregnant substance users and/or IV drug users have priority for admission to services

For more information regarding Medi-Cal enrollment and eligibility requirements, please contact HHSA-Social Services at: **(530) 573-3490**.

I already have Medi-cal! How can I find out more about the SUD treatment services I may be eligible for?

You may request a copy of the DMC Beneficiary Handbook by contacting our office by phone at 530-621-6290 or walk-in. You may request a hard copy or an electronic copy to be emailed to you. The Beneficiary Handbook is also available online at: <https://www.edcgov.us/Government/MentalHealth/Pages/Access-to-Services.aspx>



What can I expect?

Our philosophy is to “meet the client where they’re at that.” We do not believe in a one-size-fits-all approach when it comes to treating substance abuse.

You will work together with your counselor to create an individualized treatment plan based upon a thorough assessment. Staff provides support throughout your treatment journey by providing a variety of treatment and recovery services. Ongoing recovery services are also available to help maintain your recovery after completion of treatment services.