

**Behavioral Health Division Update
Behavioral Health Commission
January 2020 Data
February 26, 2020 Meeting**

ASSISTANT & DEPUTY DIRECTOR UPDATES

(Katy Eckert & Jamie Samboceti)

- We are looking forward to having a new Mental Health Director in the coming months. Interviews have occurred and the excitement is building!
- We are sad to report Katy Eckert, HHSA Assistant Director will be leaving us very soon. Her last day will be March 3rd. She has been a bright light for our HHSA family, always with a smile and desire for collaboration. We wish her well on her next adventure!!
- It is with excitement that I report a collaboration happening with our health provider in the Jails. We are working on improved information sharing between our departments, both with Specialty Mental Health Services clients entering Jail and referrals for Specialty Mental Health Services coming from the Jail as part of the release planning process. As soon as we have our documents ready and approved, we will begin the process.

EL DORADO COUNTY BEHAVIORAL HEALTH DIVISION STAFFING

- **New Hires:**
 - Devin DeLong, MHW, SLT, Wellness Team
 - Rachel Montiel, LMFT MH Clinician, Access Team
- **Promotions:**
 - None
- **Recruitments:**
 - Ongoing
 - WS Mental Health Clinicians (Extra Help and Regular)
 - WS MH Workers (Extra Help and Regular)
 - WS MH Aides (Extra Help and Regular)
 - WS Medical Office Assistant (Extra Help)
 - SLT Extra Help Clinicians, Workers and Aides
 - WS Health Education Coordinators - SUDS
 - WS Mental Health Clinician - SUDS
 - WS Health Program Specialist - SUDS
 - WS Psychiatric Technicians
 - New
 - WS Analyst (Extra Help and Regular)
- **Separations:**
 - None
- **Position Changes:**
 - None

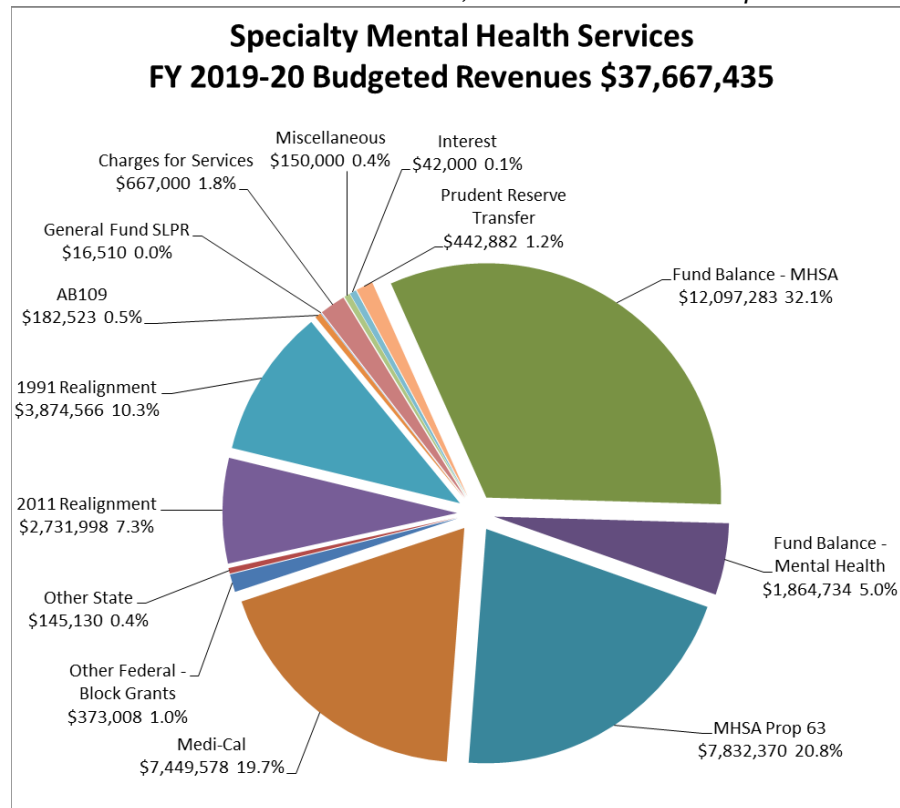
EL DORADO COUNTY BEHAVIORAL HEALTH FINANCIAL UPDATE

General Information:

- Most funding coming into Behavioral Health is tied to delivery of services for specified programs.
- Base funding levels for individual counties are now set for 2011 Realignment.
- The County budgets full use of fund balance on the revenue side and an appropriation for contingencies on the expense side to allow flexibility throughout the year.
- When the economy slows down and sales tax receipts drop statewide, we will experience a reduction in 1991 & 2011 Realignment.

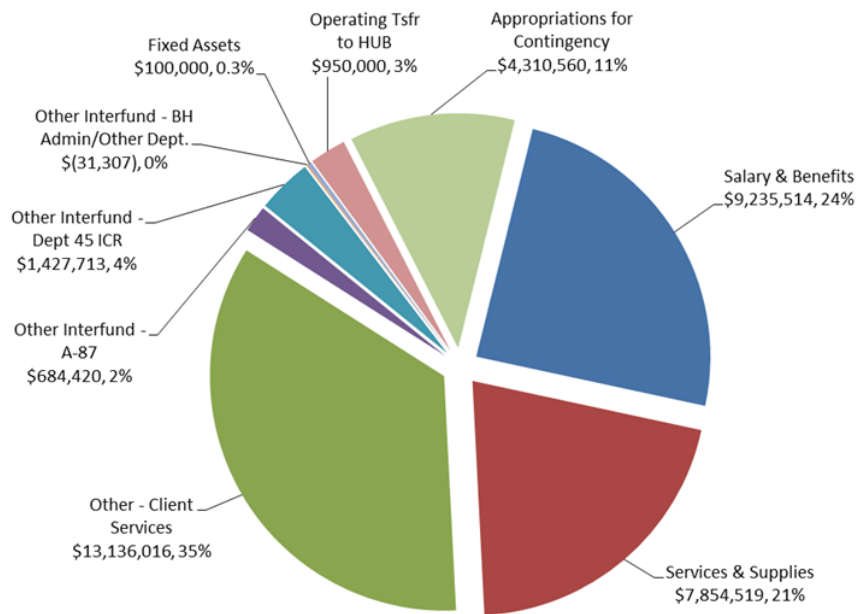
Specialty Mental Health Services

Note: An error was identified in the chart labels in previous reports. The sizes of the "pie" pieces were accurate in their reflection of the totals, but the labels did not update with the FY 19/20 values.



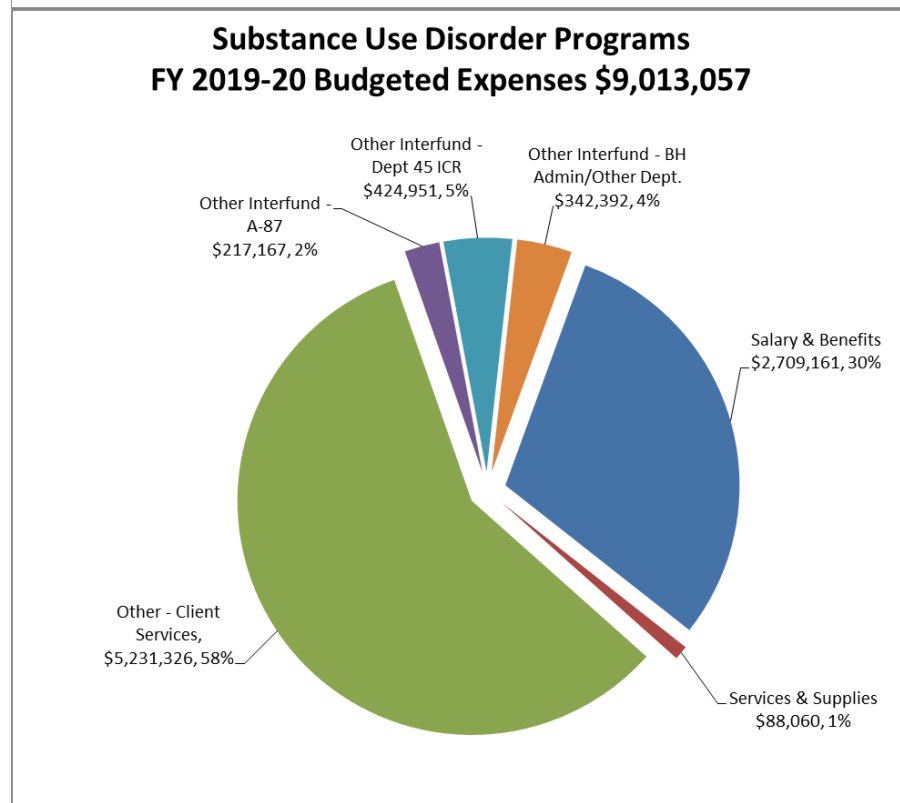
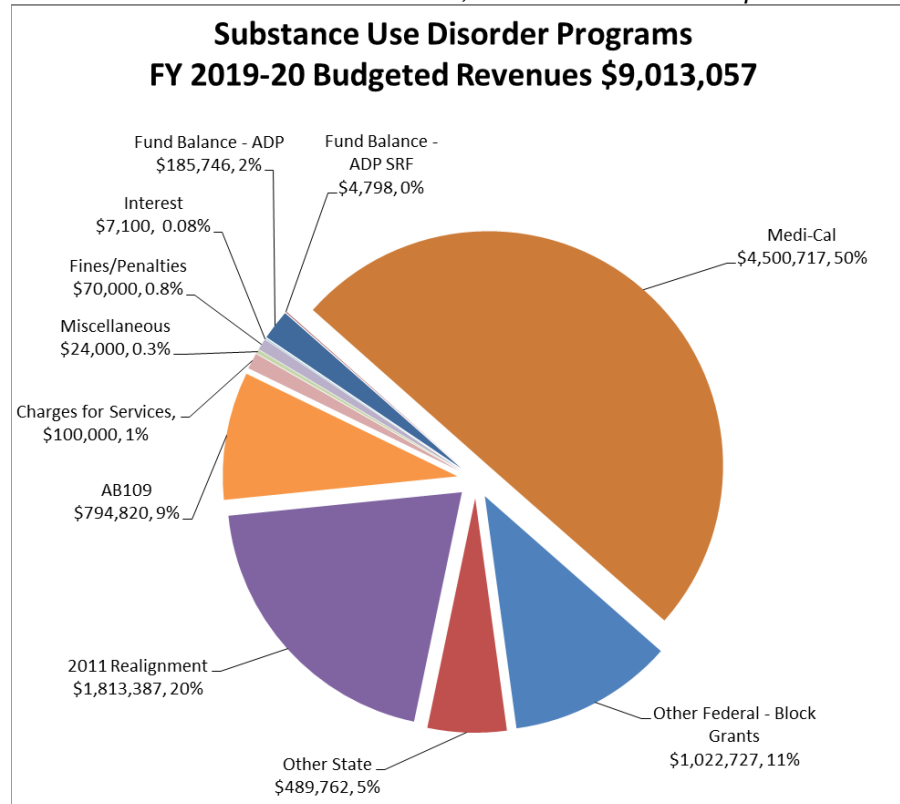
- MHSA Revenues are paid at an estimated rate throughout the year, and a true up occurs in the July/August timeframe. The true up can either greatly increase or decrease revenues received for the year.
- When the economy slows and California millionaires' income levels drop, MHSA revenues will likewise drop.

**Specialty Mental Health Services
FY 2019-20 Budgeted Expenses \$37,667,435**



Substance Use Disorder Programs

Note: An error was identified in the chart labels in previous reports. The sizes of the “pie” pieces were accurate in their reflection of the totals, but the labels did not update with the FY 19/20 values.



CASELOAD AND NEW SERVICE REQUEST DATA

Unduplicated Caseload as of January 2020

Children's Outpatient South Lake Tahoe	Clients	Children's Outpatient West Slope	Clients	Total
TAY	16	TAY	34	50
Clinic*	1	Clinic*	3	4
Contractor: Sierra Child & Family Services (SCF)**	35	Contractor: Sierra Child & Family Services (SCF)**	77	112
Contractor: Tahoe Youth & Family (TY)**	0	n/a		0
		Contractor: Summitview (SV) **	77	77
		Contractor: New Morning (NM)**	16	16
Contractor: Stanford Youth Solutions (SYS)**	1	Contractor: Stanford Youth Solutions (SYS)**	14	15
Subtotal Children's	53	Subtotal Children's	221	274

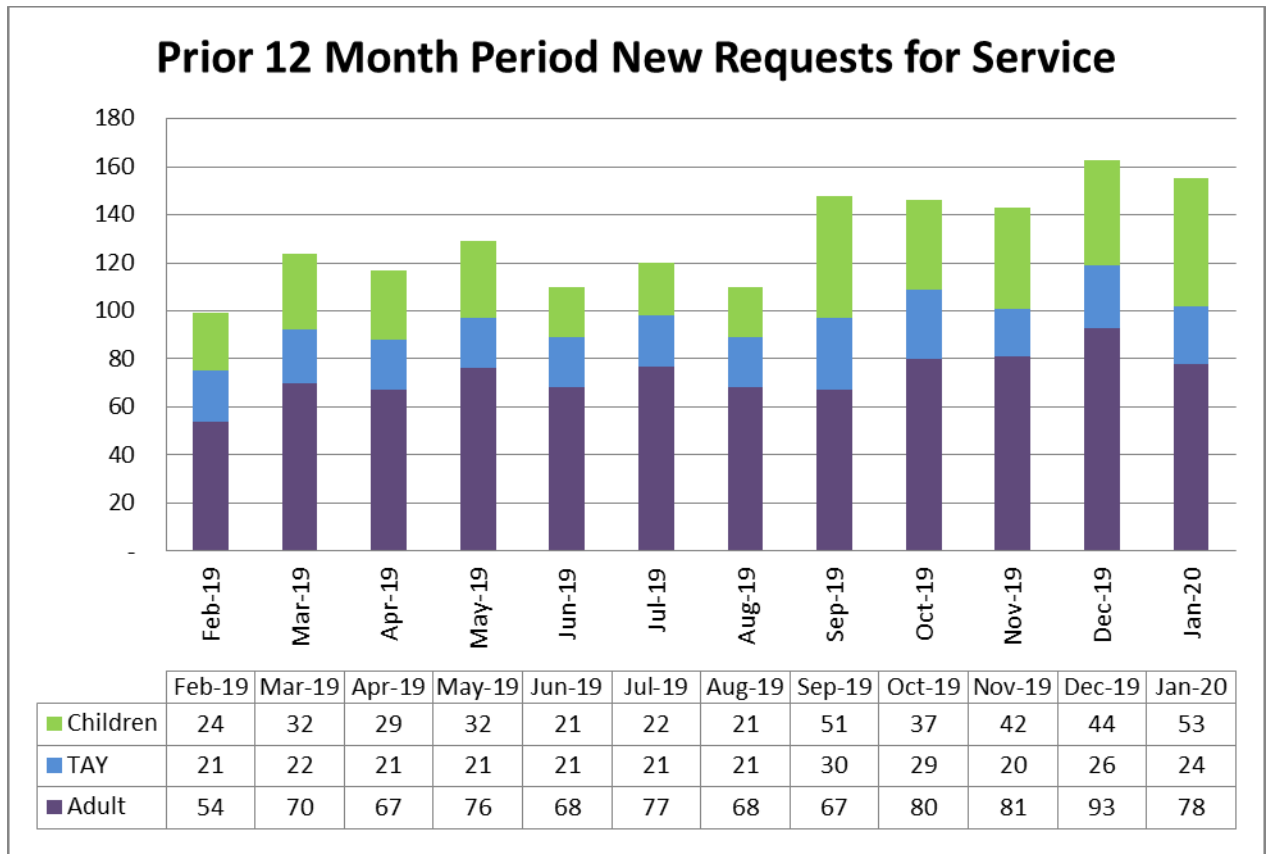
Adult Outpatient South Lake Tahoe	Clients	Adult Outpatient West Slope	Clients	Total
Clinic	76	Clinic	204	280
ICM/FSP	14	ICM/FSP	49	63
Subtotal Adults	90	Subtotal Adults	253	343

Total South Lake Tahoe	143	Total West Slope	474	617
-------------------------------	------------	-------------------------	------------	------------

* Children who are seen by the Behavioral Health Division only (no Contracted Providers)

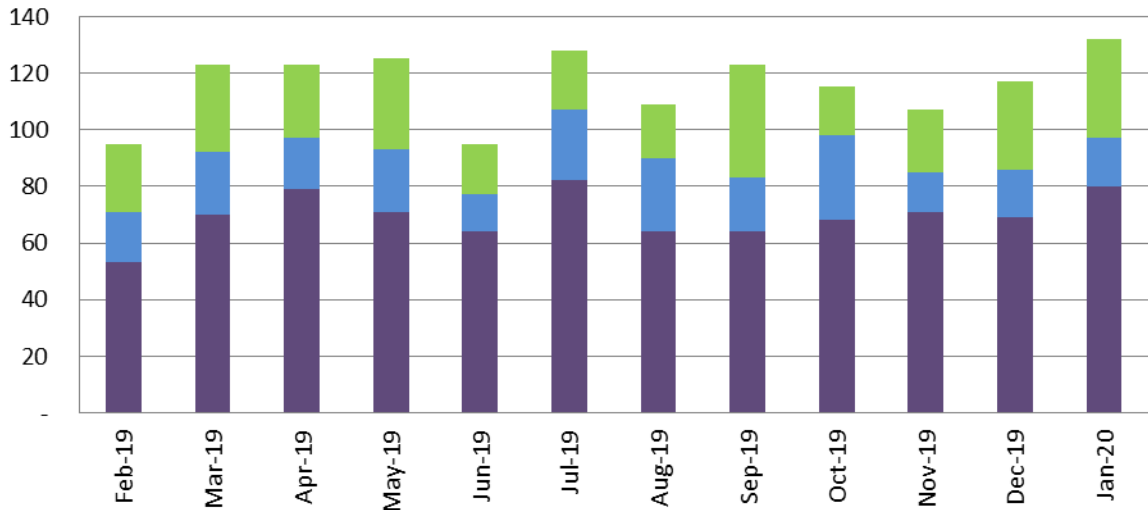
** May include children who are seen by the Behavioral Health Division's Psychiatrist

New Service Request Trends



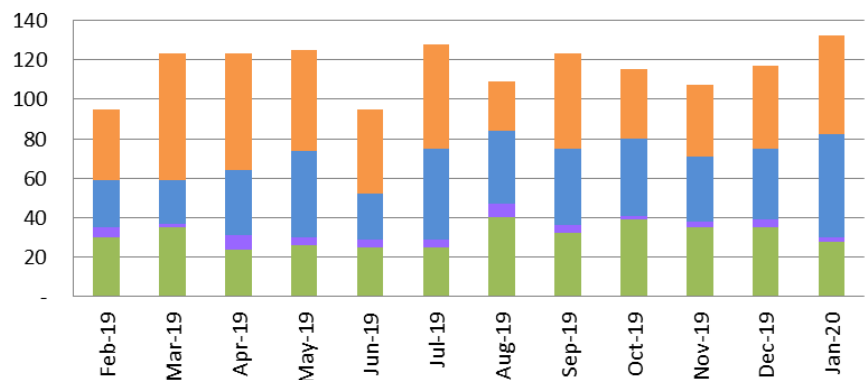
Discharged Service Request Trends

**Prior 12 Month Period Discharged Requests for Service
(by Age)**



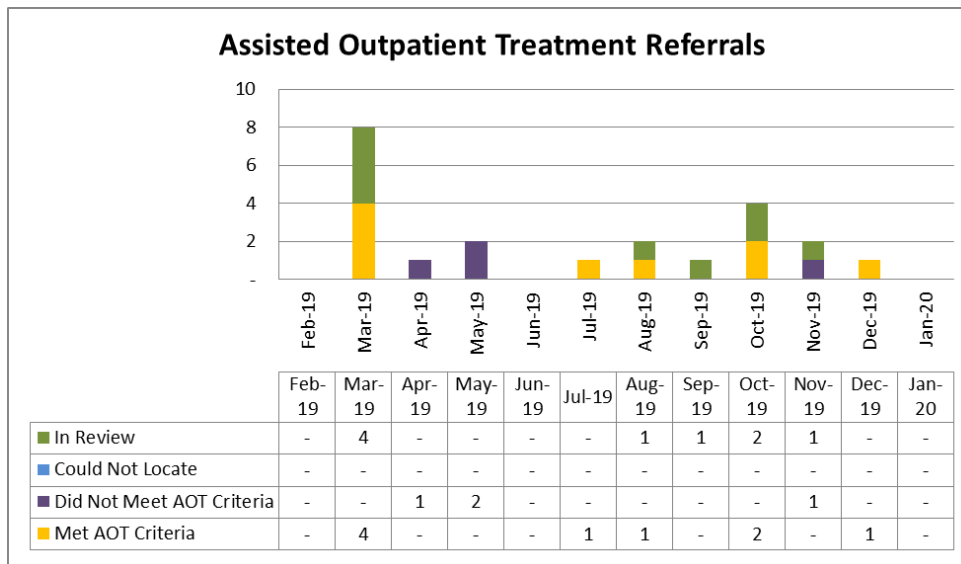
	Feb-19	Mar-19	Apr-19	May-19	Jun-19	Jul-19	Aug-19	Sep-19	Oct-19	Nov-19	Dec-19	Jan-20
Children	24	31	26	32	18	21	19	40	17	22	31	35
TAY	18	22	18	22	13	25	26	19	30	14	17	17
Adult	53	70	79	71	64	82	64	64	68	71	69	80

**Prior 12 Month Period Discharged Requests for Service
(by Disposition)**



	Feb-19	Mar-19	Apr-19	May-19	Jun-19	Jul-19	Aug-19	Sep-19	Oct-19	Nov-19	Dec-19	Jan-20
Other	36	64	59	51	43	53	25	48	35	36	42	50
Does Not Meet Medical Necessity	24	22	33	44	23	46	37	39	39	33	36	52
To Other BH Provider	5	2	7	4	4	4	7	4	2	3	4	2
To BHD OP Services	30	35	24	26	25	25	40	32	39	35	35	28

Assisted Outpatient Treatment: (Nicole Cable)



Disposition of Referrals:

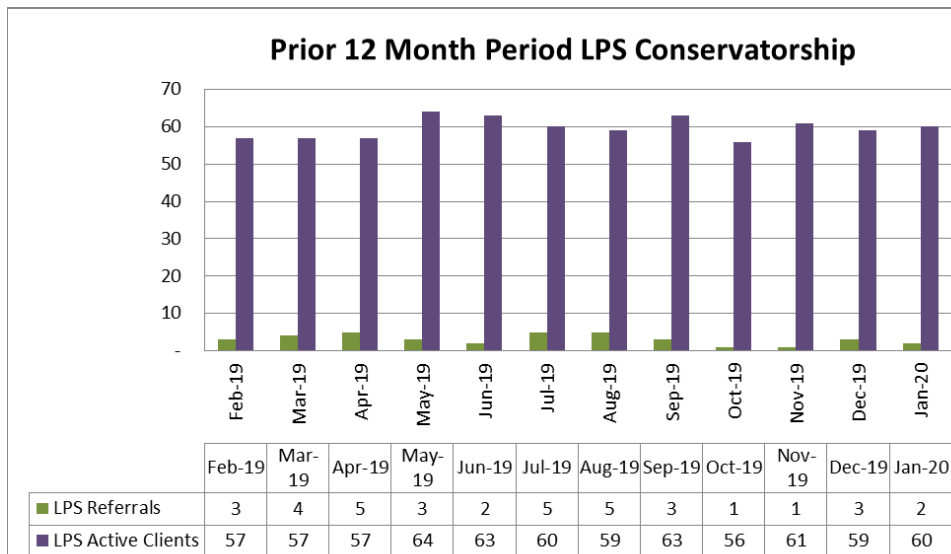
0 did not meet program criteria,
0 met initial program criteria,
2 individuals voluntarily accepted outpatient services,
0 individuals to proceed with the AOT process,
0 applications in review process

Discharged AOT clients:

2 clients discharged:
1 to a lower level of service,
1 out of services

There are currently **2** AOT clients receiving services voluntarily.

LPS Conservatorship: (Nicole Cable)



LPS Active Clients:

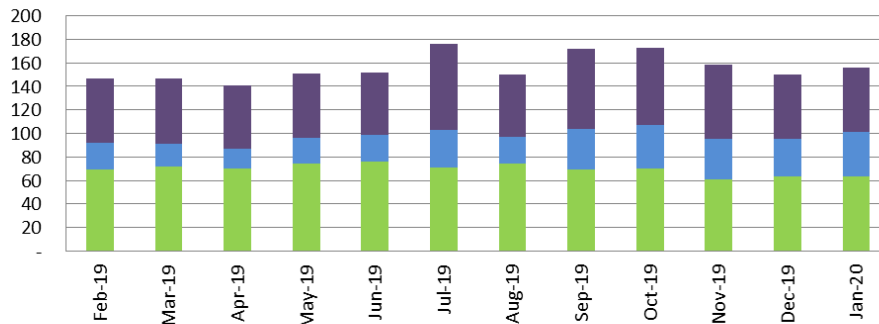
60 LPS Conservatorships
4 Temporary Conservatorships

LPS Terminations:

2 LPS Terminations
0 Pending LPS Terminations

Full Service Partnership (FSP) and Intensive Case Management (ICM) (Nicole Cable and Sabrina Owen)

Prior 12 Month Period Full Service Partnership (FSP)



	Feb-19	Mar-19	Apr-19	May-19	Jun-19	Jul-19	Aug-19	Sep-19	Oct-19	Nov-19	Dec-19	Jan-20
Children	55	56	54	55	53	73	53	68	66	63	55	55
TAY	23	19	17	22	23	32	23	35	37	34	32	38
Adult	69	72	70	74	76	71	74	69	70	61	63	63

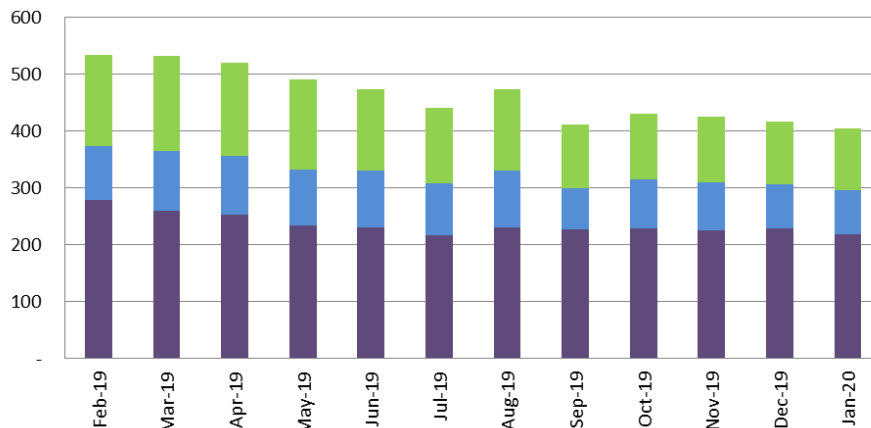
Intensive Case Management

- West Slope: Serving **47** clients
- SLT: Serving **14** clients

Outpatient Services (excludes FSP and Out-of-County Placements)

Prior 12 Month Period Outpatient Clients

(Excludes FSP and Out-of-County Clients)

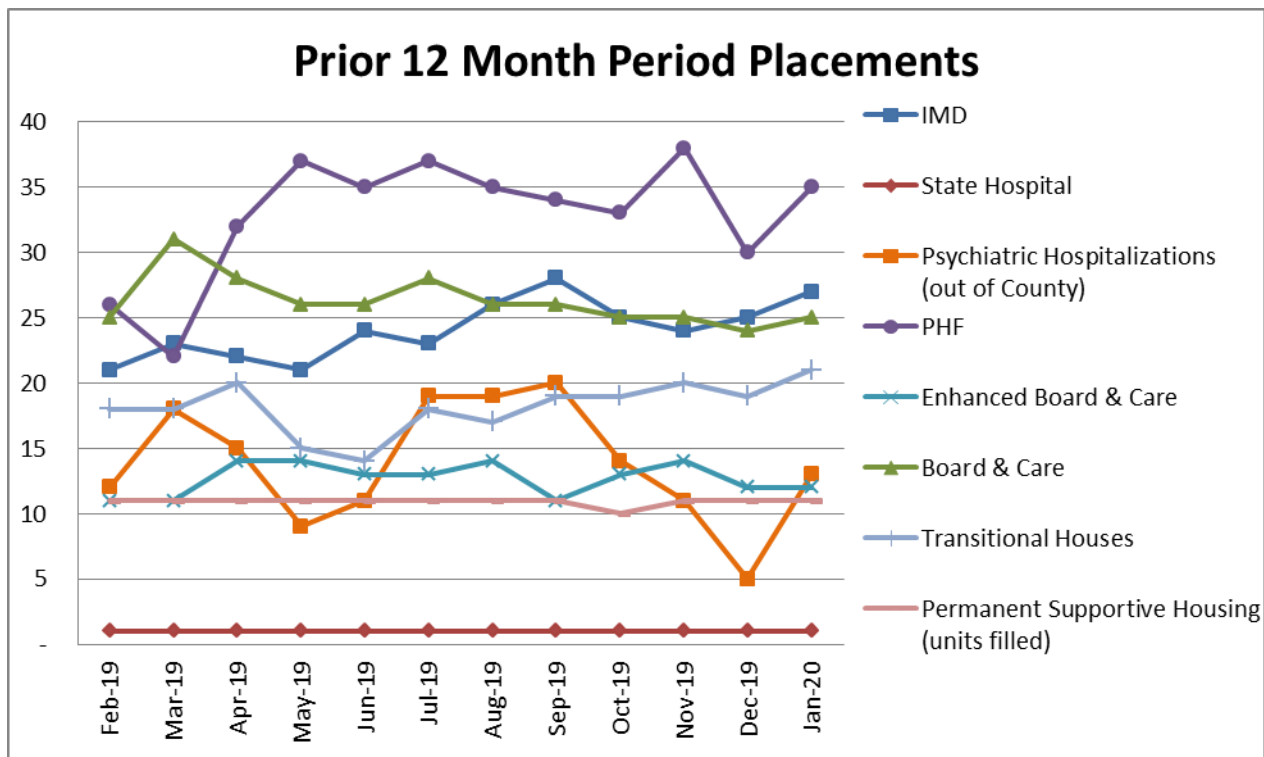


	Feb-19	Mar-19	Apr-19	May-19	Jun-19	Jul-19	Aug-19	Sep-19	Oct-19	Nov-19	Dec-19	Jan-20
Children	161	168	164	158	144	133	144	113	116	116	110	109
TAY	95	105	104	98	99	92	99	72	86	84	78	76
Adult	278	259	252	234	231	216	231	227	228	225	229	219

Discharges:

- 17 Children discharged from all services**
 - 5 Tahoe
 - 12 West Slope
- 16 TAY discharged from all services**
 - 4 Tahoe
 - 12 West Slope
- 19 Adults discharged from all services**
 - 7 Tahoe
 - 12 West Slope

PLACEMENTS



Board and Care / IMDs / Secure Placements (Nicole Cable)

- **27** IMD beds
- **1** State Hospital
- **12** Enhanced Board and Care beds
- **25** Board and Care - Sacramento & Galt
- **Total:**
 - **61** Out of County Placements
 - **4** In County Placements

Transitions Treatment Program (Nicole Cable / Sabrina Owen)

- **WS: 15** of 19 beds filled:
 - T1 **2** openings (new location)
 - T2 **0** Female openings,
 - T3 **1** Male openings,
 - T4 **1** openings
- **SLT: 2** of 6 beds filled:
 - T1 openings: 3 openings, 1 Reserved bed for returning client, expected in early February, several FSP clients being considered for T-house placement

Permanent Supportive Housing (Heather Longo / Sabrina Owen)

West Slope

Clients receive services from the Wellness and Recovery team or from community based supports

- **5** of 5 units occupied
- Wait List:
 - 1 bedroom: 5
 - 2 bedroom: 6
 - 3 bedroom: 1

South Lake Tahoe

Clients receive ICM team coverage

- **6** of 6 units occupied
- Wait List: unknown
 - This development is a floating unit configuration based on household size rather than a specific number of apartments for each number of bedrooms

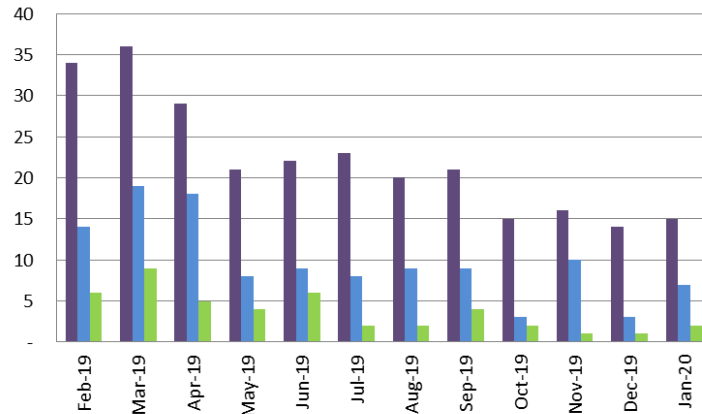
Psychiatric Health Facility (Nicole Cable)

- There were **35** Admissions; **22** Admissions were El Dorado County residents and **13** were Out of County residents.
- There were **17** El Dorado County residents discharged; **8** to Home with Support, **0** to Home without support, **2** MHRC/IMD, **0** Board and Care, **0** to ICM T-House, **5** to Shelter, **0** to Other, and **0** to Emergency Department.
- Upon discharge, **15** El Dorado County residents were insured and **2** El Dorado County residents were pending insurance.
- There were **0** Seclusion Episodes, **2** Physical Restraint Episodes (**11** minutes), **2** Assaults (**0** clients), **0** Elopements, **0** Medication Errors (**0** medication errors with no patient involvement), Client Surveys **29**
- There were **0** denials of El Dorado County referrals: N/A
- Average daily census was **11.52** (range 8-15) with **13.7** average length of stay of days.

CRISIS SERVICES

Psychiatric Emergency Services (PES) (Sabrina Owen and Angie Larrigan)

Prior 12 Month Period Psychiatric Emergency Services - SLT



	Feb-19	Mar-19	Apr-19	May-19	Jun-19	Jul-19	Aug-19	Sep-19	Oct-19	Nov-19	Dec-19	Jan-20
■ Crisis Assessments	34	36	29	21	22	23	20	21	15	16	14	15
■ Hospitalizations	14	19	18	8	9	8	9	9	3	10	3	7
■ Referrals to Substance Use Treatment	6	9	5	4	6	2	2	4	2	1	1	2

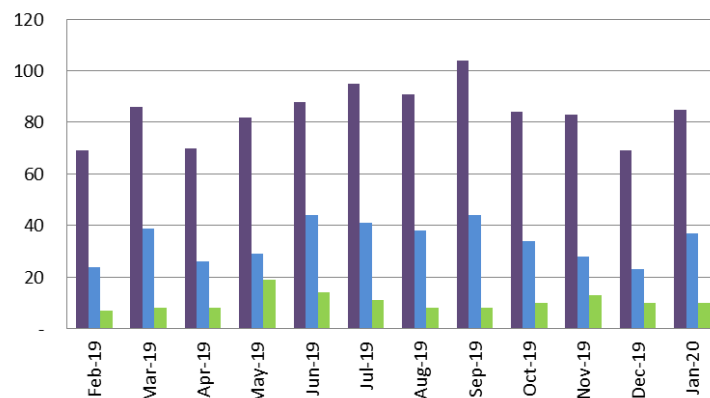
Crisis Assessments for Open Clients:

- SLT: 0
- West Slope: 20

Hospitalizations of Open Clients

- SLT: 0
- West Slope: 12_

Prior 12 Month Period Psychiatric Emergency Services - WS



	Feb-19	Mar-19	Apr-19	May-19	Jun-19	Jul-19	Aug-19	Sep-19	Oct-19	Nov-19	Dec-19	Jan-20
■ Crisis Assessments	69	86	70	82	88	95	91	104	84	83	69	85
■ Hospitalizations	24	39	26	29	44	41	38	44	34	28	23	37
■ Referrals to Substance Use Treatment	7	8	8	19	14	11	8	8	10	13	10	10

Crisis Intervention Teams (CIT) (Nicole Cable and Sabrina Owen)

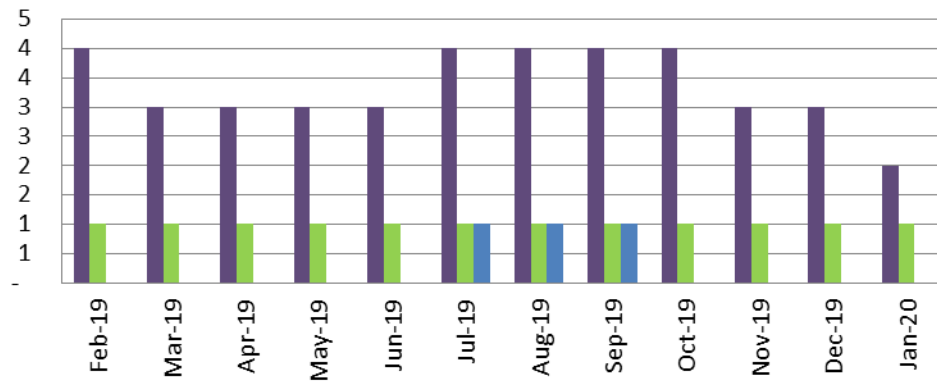
- **SLT:** MDT meeting held in January 2020. Law enforcement shared information on individuals that have been released recently that may need services. STPD was encouraged to participate in the Stepping Up meetings
- **WS:** MDT meeting held in January 2020. Was well attended by HOT Team, PERT Team, Probation, Public Guardian, APS, Behavioral Health, EDSO Jail Officers, and representative from CHC. Continue to enter clients with multiple contacts into the Care Manager system for follow up and tracking purposes.
- **PERT:**

Contacts for Month	94
Safety Plans	26
PERT Involuntary Holds Written	32
Law Enforcement Holds Written during PERT Shift	33
Voluntary Transports to Emergency Department	1
Law Enforcement Holds Written	33
Behavioral Health Outpatient Holds Written	Unk
Other/Unable to Locate/Inaccurate Report for Service	Unk
Substance Use Admitted/Confirmed	28
Adult Protective Services (APS) Referrals	3
"Fit For" Jail Crisis Risk Assessments Conducted by PERT	0

JUSTICE SERVICES

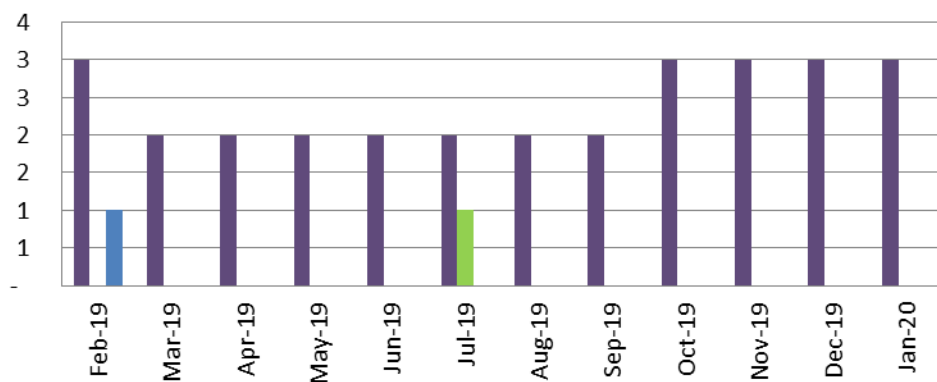
Behavioral Health Court (John Schumacher)

Prior 12 Month Period Behavioral Health Court - SLT



	Feb-19	Mar-19	Apr-19	May-19	Jun-19	Jul-19	Aug-19	Sep-19	Oct-19	Nov-19	Dec-19	Jan-20
Active Participants	4	3	3	3	3	4	4	4	4	3	3	2
Sober Living	1	1	1	1	1	1	1	1	1	1	1	1
Residential Substance Use	-	-	-	-	-	1	1	1	-	-	-	-

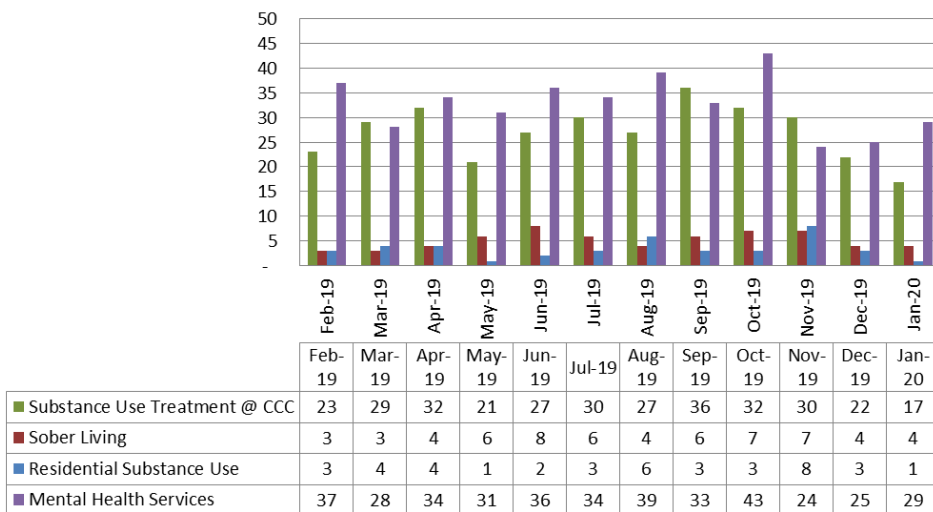
Prior 12 Month Period Behavioral Health Court - WS



	Feb-19	Mar-19	Apr-19	May-19	Jun-19	Jul-19	Aug-19	Sep-19	Oct-19	Nov-19	Dec-19	Jan-20
Active Participants	3	2	2	2	2	2	2	2	3	3	3	3
Sober Living	-	-	-	-	-	1	-	-	-	-	-	-
Residential Substance Use	1	-	-	-	-	-	-	-	-	-	-	-

AB 109 (John Schumacher)

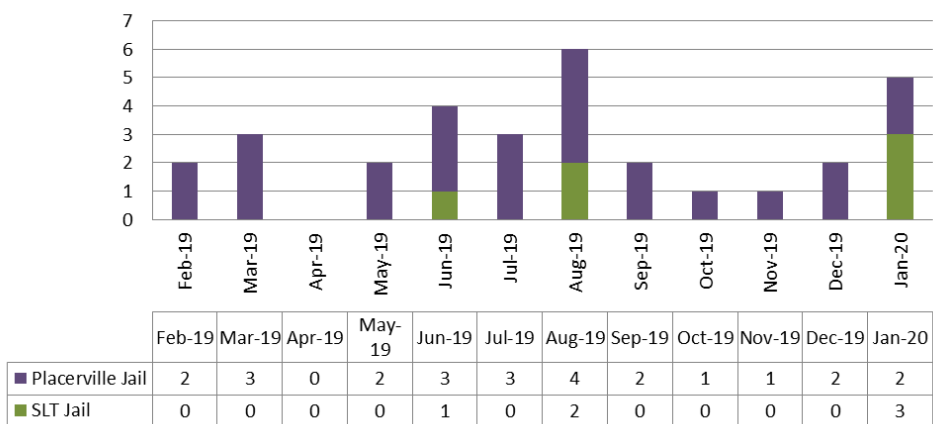
Prior 12 Month Period AB 109 Client Services at the Community Corrections Center



- **9** clients are receiving Substance Use Education services in the South Lake Tahoe jail.
- On hold at this time - 0 clients are receiving Substance Use Disorder treatment in Placerville Jail.
- **2** treatment from a contracted community provider in SLT.
- **19** clients are receiving treatment from a contracted community provider in Placerville.

Mental Health Clients in Jail (Moriah Weldy)

Prior 12 Month Period Mental Health Clients in Jail



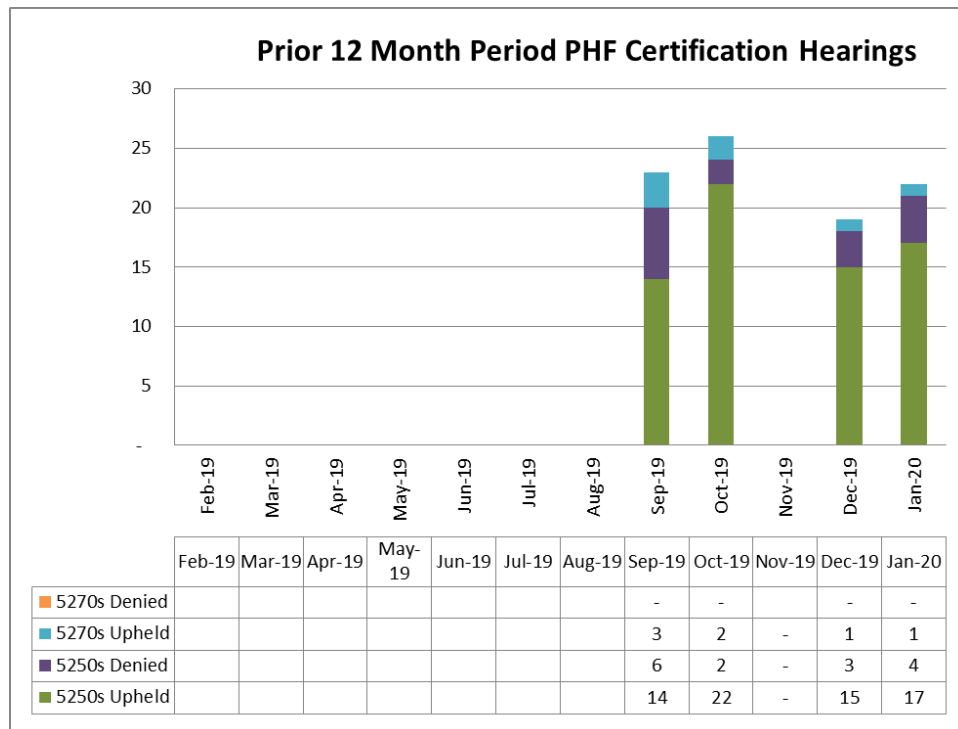
Count of Behavioral Health's existing clients that were receiving Specialty Mental Health Services at the time of their incarceration in the Placerville or SLT Jails only.

Restoration of Competency (Nicole Cable)

- **0** Outpatient ROC referrals
- **0** Jail ROC referral
- **2** client receiving ROC Outpatient services
- **0** client receiving ROC Inpatient services

QUALITY ASSURANCE & PATIENT RIGHTS

Patients' Rights Advocate (Christina Hammel)



Certification hearings are held at the PHF on Mondays and Thursdays (except holidays).

- 24 Certification Notices were served.
- 0 client discharged prior to the hearing date
- 2 clients converted to voluntary prior to the hearing
- 22 hearings were held

Quality Improvement / Utilization Review (Angelina Larrigan / Ren Strong)

- Evidenced-based safety plan is now live in Avatar.
- Documentation training was provided to Mental Health staff and Children's Contract providers in late January and will be provided again in early February.
- External Quality Review Organization (EQRO) will be held in March and the MHP has been compiling the requested documents.

Grievances/Appeals/Hearings (Christina Hammel / Ren Strong)

Month Filed	Month Completed	Type	Topic	Location	Outcomes (Appeals / Hearings Only)
12/2019		Grievance	Quality of care-Treatment issues or concerns	West Slope	--
12/2019		Grievance	Quality of care- accessibility of information in a preferred language Staff behavior concern	PHF	
12/2019		Grievance	Staff behavior concern	PHF	

Month Filed	Month Completed	Type	Topic	Location	Outcomes (Appeals / Hearings Only)
12/2019		Grievance	Quality of Care- Expressed dissatisfaction	Tahoe	
12/2019		Grievance	Quality of care- Treatment issues or concerns from a division other than Behavioral Health within HHSA Quality of care- Treatment issues or concerns at Behavioral Health	West Slope	
12/2019		Grievance	Staff behavior concern	PHF	
12/2019		Grievance	Quality of care- Treatment issues or concerns	PHF	
11/2019		Grievance	Other	PHF	
12/2019		Grievance	Quality of care- Medication concern	West Slope	
1/2020		Grievance	Quality of Care - Staff Behavior. Staff was rude and asked for confidential information.	Tahoe	
1/2020		Grievance	Quality of Care - Treatment Issues or Concerns. Clinician misheard statement and sent client to Emergency.	West Slope	
1/2020		Grievance	Quality of Care - Staff Behavior. Staff is antagonistic and disrespectful to client.	West Slope	
2/2020		Grievance	Quality of Care - Smoking is too close to the building.	West Slope	
2/2020		Grievance	Other - Patients' Rights. Client's rights were violated and staff treated family poorly.	West Slope	

PROGRAM ACTIVITY UPDATES

ALCOHOL AND DRUG SERVICES / SUBSTANCE USE DISORDERS (Salina Drennan)

Tahoe:

- Staff have recently reached out to Barton Community Health Center Medication Assisted Treatment (MAT) services and El Dorado County Employment Services to establish a direct referral process for their clients to engage in Substance Use Disorder Services (SUDS) treatment. Our outreach efforts were so greatly welcomed and appreciated by both agencies and we look forward to collaborating and bringing much needed services to our community.

West Slope:

- Staff have continued to attend training related to our Practice Guidelines and other Drug Medi-Cal Organized Delivery System (DMC-ODS)-related requirements. We are currently developing the provider training schedule for the next 18 months. We are also working on registering our trainer so that Substance Use Disorder Services Continuing Education Units (CEUs) can be provided for training participants.

MENTAL HEALTH SERVICES ACT (MHSA) (Heather Longo/Tami Smith)

- The MHSA team participated in various conference calls, webinars, and meetings related to items of interest to MHSA.
- The Community Hubs partner agencies attended the January MHSOAC Meeting. Although the Community Hubs Innovation program modification was initially on the consent calendar, the item was removed from the consent calendar and continued to the February 27, 2020 meeting to allow further discussion.
- The formal Community Program Planning Process continued into January, and the next Three-Year Program and Expenditure Plan ("MHSA Plan") is being drafted. The Draft MHSA Plan is on target to be released in mid-March for a 30-day public comment period, and the anticipated Public Hearing would be scheduled for April.

February 26, 2020 Behavioral Health Commission Meeting

FY 19/20 ACTIVITY	JUL	AUG	SEPT	OCT	NOV	DEC	JAN	FEB	MAR	APR	MAY	JUN	
1 CPPP	Informal		Formal					Informal					
2 Technical Input													
3 Develop Draft													
4 Comment Period / Hearing													
5 Draft Proposed Final													
6 Board of Supervisors													
6a MHSOAC (approximate)													
FY 20/21 ACTIVITY	JUL	AUG	SEPT	OCT	NOV	DEC	JAN	FEB	MAR	APR	MAY	JUN	
6b MHSOAC (approximate, if needed)													
7 Implement													
8 Evaluate		Data from Prior Fiscal Year							Ongoing				

OUTPATIENT SERVICES

(Sabrina Owen (SLT); Doris Jones and Nicole Cable (WS))

Wellness Center Activities:

Tahoe:

- We are happy to have Devin Delong, our new wellness staff, who brings with her new ideas to infuse into our wellness activities. We look forward to adding some new groups, one example is a music group, and updating our wellness brochure.

Participants have learned new meals thanks to a revised menu and many report enjoying the opportunity to cook.

West Slope:

- Wellness Center activities continued in January.

ICM Activities:

Tahoe:

- Clients continue to work with staff to learn to recognize and manage their symptoms, learn DBT skills and improve management of ADL's.

West Slope:

- Several clients are adjusting to a recent relocation to a new T-House in Placerville from Camino; this new placement provides easier access to town.
- We had a client successfully transition to independent living and they are utilizing the skills learned in the T-House Program to support themselves.
- Clients continue to display their knowledge of symptom management and willingness to learn and participate in the program.

Children's Services (Angie Larrigan)

- Two teenage suicides took place in January within 48 hours. Community providers and EDC BH provided support and debriefing to those affected. The Student Wellness Centers served as central campus support sites during this difficult time. The ripple effect of these tragedies was tremendous and we are grateful for the overwhelming support for all community partners.
- Monthly Children's SMHS Contract Provider Meetings continue to take place and are well attended by Sierra Children and Family Services, New Morning Youth and Family Services, Summitview Child and Family Services, and Stanford Youth Solutions staff. The meetings focus on quality assurance, utilization review, resource sharing, and networking.
- Student Wellness Centers are welcomed and well attended at Ponderosa, El Dorado, Oak Ridge and Independence High School. The Student Wellness Centers use Apricot case management software to capture data. In the past 13 weeks (since the beginning of the contract), the Student Wellness Centers have completed 229 formal intakes and have made over 600 contacts. In January alone, the Student Wellness Centers interfaced with several hundred students to provide as-needed grief and loss support shortly after the tragic suicides. The Student Wellness Centers are averaging 3 psychiatric emergencies and 3 suspected child abuse reports each week. A Student Wellness Center will be opened at Union Mine High School in Early February.
- The Children's Placement Committee collaborated and began to familiarize with AB 2083. AB 2083 builds "upon the current Continuum of Care Reform implementation effort by, among other things, developing a coordinated, timely, and trauma-informed system-of-care approach for children and youth in foster care who have experienced severe trauma. The bill [requires] each county to develop and implement a memorandum of understanding, as specified, setting forth the roles and responsibilities of agencies and other entities that serve

children and youth in foster care who have experienced severe trauma.”¹ The team will collaborate with all child-serving systems to develop an MOU by June 2020.

TAY DBT/FEP Program (Sabrina Owen and Lesly Van Sloten)

Tahoe

- There are 5 DBT groups at South Tahoe High School (with a waiting list) and one DBT group at Tallac. Students and staff are very appreciative of having these services on campus and report they are very helpful. As we have several new staff members, a FEP training/refresher is in the works. The current FEP caseload is small.

¹ https://leginfo.legislature.ca.gov/faces/billTextClient.xhtml?bill_id=201720180AB2083

ADULT OUTPATIENT GROUP SCHEDULES

WS Adult Outpatient Services

Monday	
BHC/Wellness - Check In Group	10:30 am - 11:30 am
Anger Management	1:15 pm - 2:00 pm (Open to clients)
Ted Talks	1:15 pm - 2:00 pm (Wellness/Peer Led)
Exercise Group	2:00 pm - 3:00 pm (Wellness/Peer Led)
Basic Conversation Skills	2:00 pm - 3:00 pm (Wellness)
Stress Reduction	3:00 pm - 4:00 pm (Open to clients)
Play a Game Group	3:00 pm - 4:00 pm (Wellness)
Life Skills	3:00 pm - 4:00 pm
Tuesday	
Dried Mangoes Rehearsal Music Group	10:00 am - 11:00 am (Wellness)
Ted Talks	1:15 pm - 2:00 pm (Wellness/Peer Led)
Women's Co-Occurring Recovery Group	1:15 pm - 2:45 pm (ADP)
Art Group with Jan from NAMI	1:30 pm - 3:00 pm (Wellness/Peer Led)
Healthy Pleasures	1:30 pm - 2:30 pm (Staff and Peer Led)
Job Connections Group	1:30 pm - 3:30 pm (Wellness)
Smoking Cessation	3:00 pm - 4:00 pm (Wellness)
Wednesday	
DBT Skills Group - Skills Training	10:00 am - 12:00 pm
Transitional Housing Independent Living Skills	12:00 pm - 1:00 pm
Dual Recovery Anonymous - Peer Support Group	1:00 pm - 2:00 pm (Wellness/Peer Led)
Ted Talks	1:15 pm - 2:00 pm (Wellness/Peer Led)
Self-Care/ADLS Group	1:30 pm - 3:30 pm (Wellness)
Soothing Techniques	2:00 pm - 3:00 pm (Wellness)
Anger Management Group	2:00 pm - 3:00 pm
MH Peer Leadership Academy	2:00 pm - 4:00 pm
Thursday	
Seeking Safety Group	10:30 am-12:00 pm
Improv Music Group	10:00 am - 11:00 am (Wellness/Peer Led)
Women's Co-Occurring Recovery Group	1:15 pm - 2:45 pm (Seeking Safety, ADP)
Healthy Pleasures	1:30 pm - 2:30 pm (Wellness)
TAY DAY	2:00 pm - 4:00 pm (Wellness)
Anxiety and Depression Group	2:30 pm - 3:30 pm (Wellness/Peer Led)
Friday	
DBT Group - Skills Training	10:00 am - 12:00 pm (Closed)
Men's Co-Occurring Recovery Group	10:15 am - 11:45 am (ADP)
Ted Talks	1:30 pm - 2:00 pm (Wellness/Peer Led)
DBT Group - Skills Training	1:30 pm - 2:30 pm
Cinema Club	2:00 pm - 4:00 pm (Wellness)
Mindfulness Group (On hold)	2:45 pm - 3:30 pm (Wellness)

SLT Adult Outpatient Services

Monday	
Co-Occurring DBT	11:00 am - 12:00 pm
DBT - Mindfulness (modified)	1:00 pm - 2:30 pm
Women's Group	1:00 pm - 2:30 pm
DBT - Skill Building	1:30 pm - 2:30 pm (Wellness)
TED Talks - Information & Conversation	3:00 pm – 3:30 pm (Wellness)
Current Events Discussion	3:35 pm – 4:00 pm (Wellness)
Tuesday	
DBT - Mindfulness	1:00 pm - 2:30 pm
Health Awareness/Cooking	1:30 pm - 2:30 pm (Wellness)
Peer Leadership	3:00 pm - 3:30 pm (Wellness)
Just One Thing (Mindfulness)	3:35 pm - 4:00 pm (Wellness)
Wednesday	
DBT – Emotional Regulation	10:30 pm - 12:00 pm
DBT – Interpersonal Effectiveness	1:00 pm - 2:30 pm
Recovery Through Art	1:30 pm - 2:30 pm (Wellness)
Refuge Recovery	3:00 pm - 3:30 pm (Wellness)
Healthy Relationship Skills	3:35 pm - 4:00 pm (Wellness)
Thursday	
Co-occurring Women's Group	10:30 am - 12:00 pm (ADP)
DBT - Distress Tolerance	1:00 pm - 2:30 pm
Community Excursions	1:00 pm – 4:00 pm (Wellness)
Movement Mindfulness	1:30 pm - 2:30 pm (Wellness)
Stress Management/Coping Skills	3:00 pm - 3:30 pm (Wellness)
Social Awareness	3:35 pm - 4:00 pm (Wellness)
Friday	
BHC Group	12:30 pm - 1:00 pm
Volunteering	1:00 pm - 4:00pm (Wellness)
Anger Management	1:30 pm - 2:30 pm (Wellness)
Leisure Skills	3:00 pm – 3:30 pm (Wellness)
Paths to Recovery (Book Study)	3:35 pm - 4:00 pm (Wellness)
Men's Wellness	2:30 pm - 4:00 pm
Saturday	
Friends 'n Fitness	11:00 am - 12:30 pm

INITIALS & DEFINITIONS

Initials	Definition
AB	Assembly Bill
ACEs	Adverse Childhood Experiences
ADL	Activities of Daily Living
ADP	Alcohol and Drug Programs
AMFT	Associate Marriage and Family Therapist
AOT	Assisted Outpatient Treatment
APCC	Associate Professional Clinical Counselor
APS	Adult Protective Services
ARF	Adult Residential Facility
B&C	Board and Care
BHC	Behavioral Health Court
BHD	Behavioral Health Division (formerly the Mental Health Division)
BOMUSD	Black Oak Mine Unified School District
BSCC	Board of State and Community Corrections
CalMHSA	California Mental Health Services Authority
CalQIC	California Quality Improvement Coordinators
CANS	Child and Adolescent Needs and Strengths
CBHDA	County Behavioral Health Directors Association of California
CBO	Community Based Organization
CBT	Cognitive Behavior Therapy
CCC	Community Corrections Center or California Conservation Corps
CCP	Community Corrections Partnership
CCR	Continuum of Care Reform
CDCR	California Department of Corrections and Rehabilitation
CDSS	California Department of Social Services
CEU	Continuing Education Unit
CFMG	California Forensic Medical Group
CFR	Code of Federal Regulations
CFT	Children and Family Teams
CFTN	Capital Facilities and Technology Needs
CHP	California Highway Patrol
CIT	Crisis Intervention Team
CMS	Centers for Medicare & Medicaid Services
CPP	Community Planning Process
CPS	Child Protection Services
CPT	California Psychiatric Transitions
CSS	Community Services and Supports
CWS	Child Welfare Services
DBT	Dialectical Behavior Therapy
DHCS	Department of Health Care Services (California)
DMC-ODS	Drug Medi-Cal Organized Delivery System
Dx	Diagnosis
ED	Emergency Department
EDC	El Dorado County
EDCMH	El Dorado County Mental Health
EDCOE	El Dorado County Office of Education
EDCSO	El Dorado County Sheriff's Office
EDSO	El Dorado Sheriff's Office
EDCVC	El Dorado Community Vision Coalition
EH	Extra Help

EHR	Electronic Health Record
EPSDT	Early and Periodic Screening, Diagnosis and Treatment
EQRO	External Quality Review Organization
ER	Emergency Room
FEP	First Episode Psychosis
FSP	Full Service Partnership
FTE	Full-Time Equivalent
FY	Fiscal Year
HHSA	Health and Human Services Agency
HOT	Homeless Outreach Team
Hubs	Reference to the Innovation Program “Community-Based Engagement and Support Services”, also called “Community Hubs”
IA	Intergovernmental Agreement
ICC	Intensive Care Coordination
ICM	Intensive Case Management
IHBS	Intensive Home-Based Services
IMD	Institution for Mental Disease (facility)
ITWS	Information Technology Web Services
Katie A.	<i>Katie A. vs. Bonta</i> Lawsuit and/or resulting programs/services
LCSW	Licensed Clinical Social Worker
LL	Laura’s Law
LOCUS	Level of Care Utilization System
LPCC	Licensed Professional Clinical Counselor
LPS	Lanterman Petris Short
LT	Limited Term
LTCC	Lake Tahoe Community College
MAR	Medication Administration Record
MDT	Multi-Disciplinary Team
M-F	Monday through Friday
MH	Mental Health
MHD	Mental Health Division
MHRC	Mental Health Rehabilitation Center (facility)
MHSA	Mental Health Services Act
MHSOAC	Mental Health Oversight and Accountability Commission
MHSUDS	Mental Health and Substance Use Disorder Services, a division of the State’s Department of Health Care Services (DHCS)
MHW	Mental Health Worker
MIOCR	Mentally Ill Offender Crime Reduction
MOA	Medical Office Assistant
MOU	Memorandum of Understanding
MRT	Moral Reconciliation Therapy
NACT	Network Adequacy Certification Tool
NM	New Morning Youth & Family
NOABD	Notice of Adverse Benefit Determination
OAC	Mental Health Services Oversight and Accountability Commission, also MHSOAC
OP	Outpatient
PA	Physician Assistant
PATH	Projects for Assistance in Transition from Homelessness
PCP	Primary Care Physician
PD	Police Department
PEI	Prevention and Early Intervention
PERT	Psychiatric Emergency Response Team
PES	Psychiatric Emergency Services

PG	Public Guardian
PHF	Psychiatric Health Facility
PIP	Primary Intervention Program or Program Improvement Plan
POC	Plan of Correction
PPD	Placerville Police Department
PSC-35	Pediatric Symptom Checklist
QA/UR	Quality Assurance/Utilization Review
QI	Quality Improvement
QI/UR	Quality Improvement/Utilization Review
QIC	Quality Improvement Committee
RIF	Reduction in Force
RFI	Request for Information
RFP	Request for Proposal
RFQ	Request for Qualifications
ROI	Authorization for Release of Information
ROC	Restoration of Competence
RV	Remi Vista
SAMHSA	Substance Abuse and Mental Health Services Administration
SB	Senate Bill
SCF	Sierra Child & Family
SLT	South Lake Tahoe
SLTPD	South Lake Tahoe Police Department
SO	Sheriff's Office
STHS	South Tahoe High School
STRTP	Short-Term Residential Therapeutic Program
SUD	Substance Use Disorders
SV	Summitview Child & Family
SYS	Stanford Youth Solutions
T-House	Transitional Housing
TAY	Transitional Age Youth
TBD	To Be Determined
TCH	Tahoe Coalition for the Homeless
TFC	Therapeutic Foster Care
TYFS	Tahoe Youth and Family Services
Tx	Treatment
TY	Tahoe Youth and Family Services
UR	Utilization Review
VA	United States Department of Veterans Affairs
WET	Workforce Education and Training
WIA	Workforce Investment Act
WOIA	Workforce Innovations and Opportunities Act
WS	West Slope