



Community Hub 5 is within Supervisorial District 5 and includes the communities of Kyburz, Meyers, Pollock Pines, South Lake Tahoe, Tahoma, and Strawberry.

Hub 5 - Fiscal Year 2018-2019



People Served

893

Children ages 0-5



467

Parents & Caregivers

Services Provided

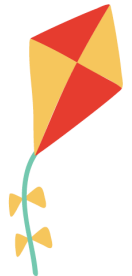
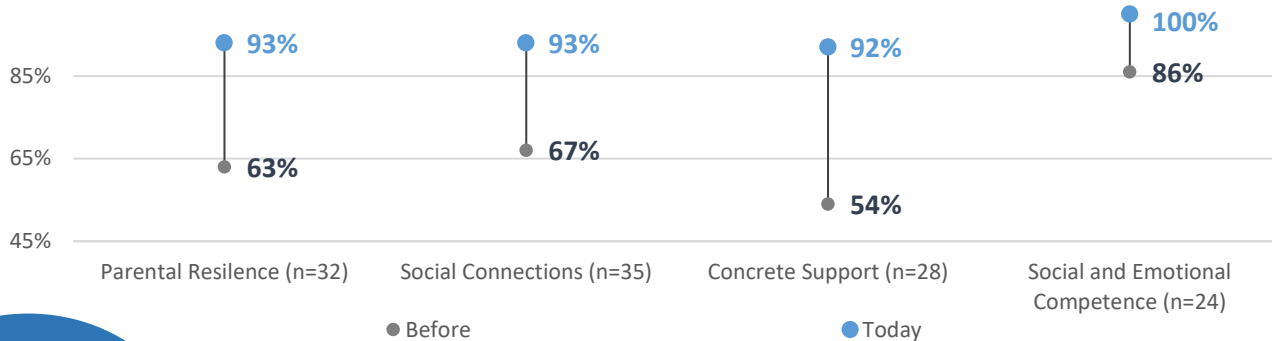
- **235** Literacy Activities
- **6** Playgroups
- **201** Developmental Screenings
- **468** Health Services

Community Hubs build strong, resilient families utilizing the research-based Strengthening Families Protective Factors framework as an approach to serving and measuring outcomes. The chart below demonstrates the amount of change for those families who experienced growth by protective factor after participating in services. In Hub 5, the greatest growths were in the areas of concrete support in times of need (38%), parental resiliency (30%) and social connections (26%).

Improved Family Functioning

Protective Factors

Agreement Before and After Receiving First 5 Services for Families Experiencing Growth



Improved School Readiness

Hubs promote school readiness by providing child development services, coaching and support for families. In Hub 5, families are supporting their children's growth and development with daily activities to include literacy (63%), numeracy (54%), learning through play (67%), physical exercise (34%), and following regular routines (58%).

Reading Routines



63% of participating families read to their child daily.

Numeracy Activities



54% of participating families practice counting or activities that involve numbers daily.

Learning through Play



67% of participating families play with their child daily.

Physical & Motor Development



34% of participating families take their child outdoors to participate in physical activities daily.

Regular Routines



58% of participating families follow a regular routine daily.