

FOR REDUCED PLANS ORIGINAL SCALE IS IN INCHES

File: K:\p\07\142x\1480\DWG\SILVER SPRINGS 76108\1002 PP SET\Plan Sheets\01_CVR.dwg Jun 01, 2020 - 9:11am timojo

INDEX TO SHEETS

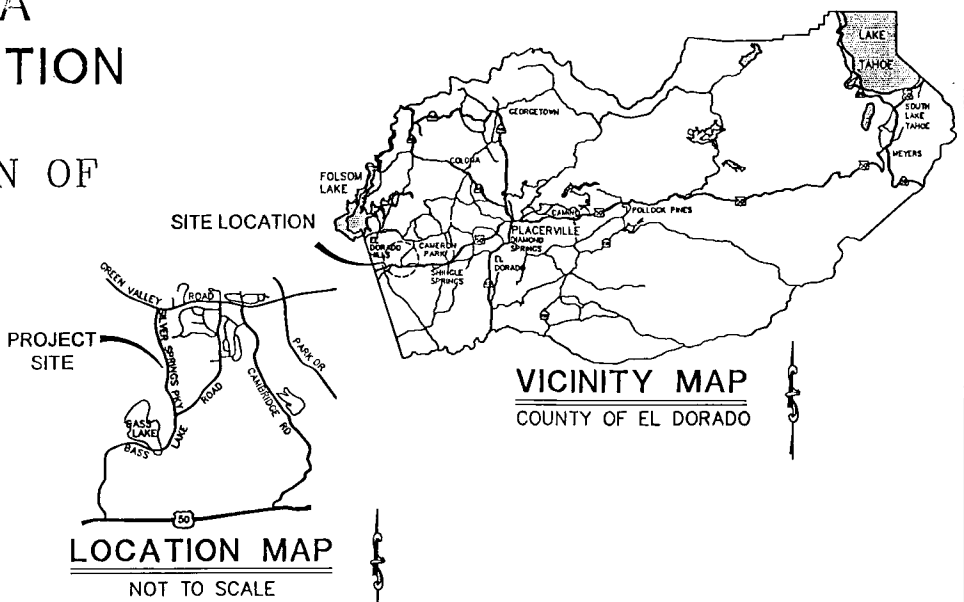
- 1. COVER SHEET
2. LEGENDS AND ABBREVIATIONS
3. TYPICAL SECTIONS, LINE A
4. TYPICAL SECTIONS, LINE A
5. TYPICAL SECTIONS, LINE B
6. DETAILS
7. HORIZONTAL LAYOUT AND CONTROL, LINE A
8. HORIZONTAL LAYOUT AND CONTROL, LINE B
9. PROJECT HORIZONTAL CONTROL
10. PLAN & PROFILE, LINE A STA 126+00 TO 138+00
11. PLAN & PROFILE, LINE A STA 138+00 TO 150+00
12. PLAN & PROFILE, LINE B STA 9+50 TO 16+00
13. UTILITY PLAN, LINE A STA 126+00 TO 138+00
14. UTILITY PLAN, LINE A STA 138+00 TO 150+00
15. UTILITY PLAN, LINE B STA 9+50 TO 15+25
16. DRAINAGE DETAILS
17. RETAINING WALL PLAN AND PROFILE
18. RETAINING WALL SECTIONS & DETAILS
19. BIORETENTION BASIN
20. DRIVEWAY STATIONS 134+77.70 & 146+55.30
21. DRIVEWAY STATION 139+00
22. PAVEMENT DELINEATION AND SIGNAGE PLAN, LINE A
23. PAVEMENT DELINEATION AND SIGNAGE PLAN, LINE B
24. TREE REMOVAL AND DEMOLITION PLAN, STA 125+50 TO 138+50
25. TREE REMOVAL AND DEMOLITION PLAN, STA 138+50 TO 150+00
26. FENCE PLAN
27. STAGE 1 CONSTRUCTION PLAN
28. STAGE 2 CONSTRUCTION & STRIPING PLAN
29. STAGE 2 OFF-SITE SIGNAGE PLAN
30. STAGE 3 CONSTRUCTION & STRIPING PLAN
31. STAGE 3 OFF-SITE SIGNAGE PLAN
32. STAGE 4 CONSTRUCTION & SIGNAGE PLAN
33. EROSION CONTROL PLAN
34. LANDSCAPE PLAN

COUNTY OF EL DORADO, CA
DEPARTMENT OF TRANSPORTATION

PROJECT PLANS FOR THE CONSTRUCTION OF
PROJECT # 76108
SILVER SPRINGS PARKWAY
OFFSITE (SOUTH SEGMENT)

IN THE COUNTY OF EL DORADO, DISTRICT I
SECTION 32, TOWNSHIP 10N, RANGE 9E MDM

To be supplemented with Standard Plans and Specifications dated 2015, including
the amendments to the 2015 Standard Specifications, of the California
Department of Transportation, unless otherwise noted.
and
Design Standard Details as included in Volume V of El Dorado County Design
and Improvement Standards Manual, revised 5/18/90



BOARD OF SUPERVISORS
I JOHN HIDAHL
II SHIVA FRENTZEN
III BRIAN VEERKAMP
IV LORI PARLIN
V SUE NOVASEL

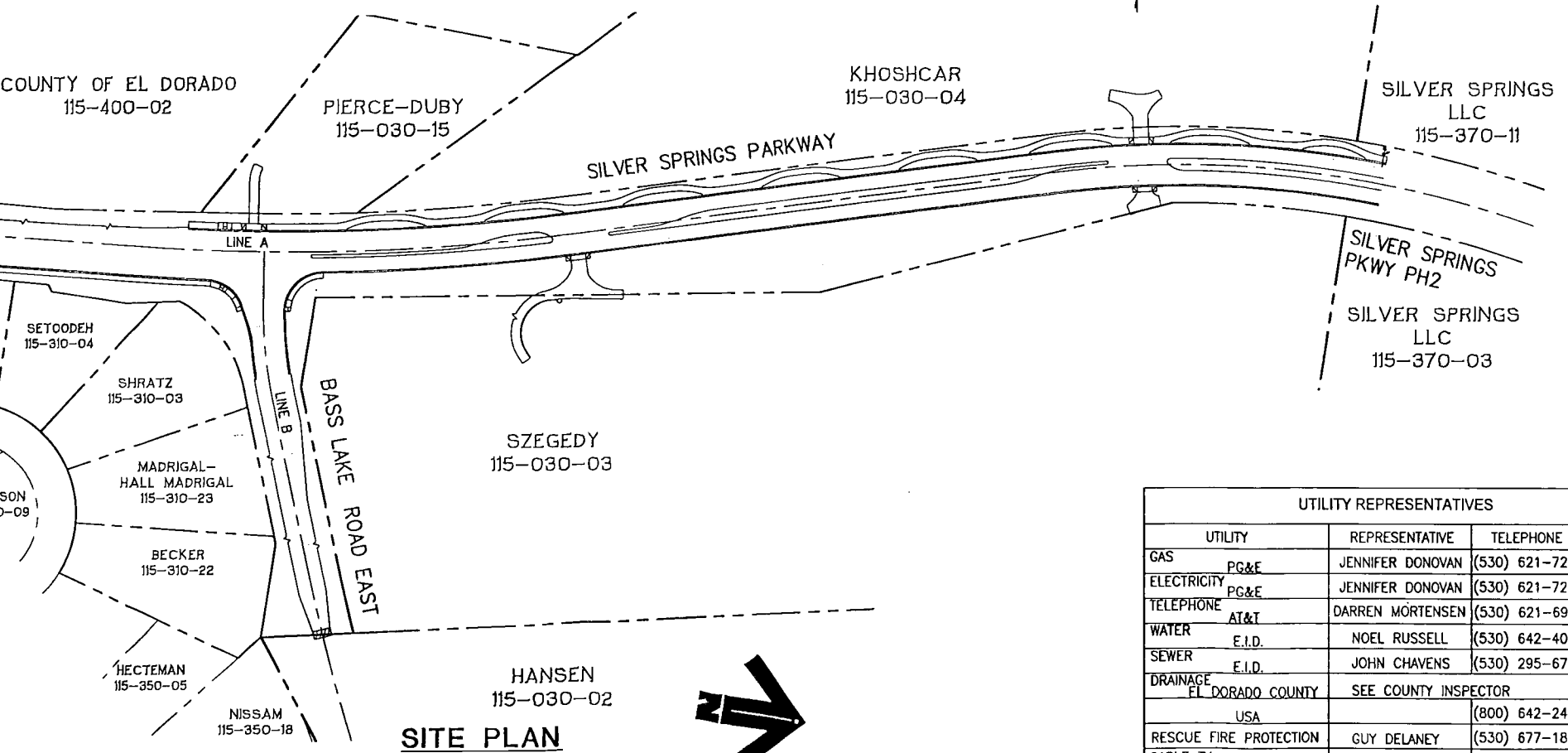
COUNTY OF EL DORADO
DEPARTMENT OF TRANSPORTATION
(530) 621-5900
2850 FAIRLANE CT
PLACERVILLE, CA 95667

ADOPTED AND APPROVED BY: [Signature] DATE: 6/13/20
BRIAN VEERKAMP CHAIR, EL DORADO COUNTY BOARD OF SUPERVISORS
APPROVED BY: [Signature] DATE: 6/9/20
RAFAEL MARTINEZ JURE DEPUTY COUNTY ADMINISTRATOR
DEPARTMENT OF TRANSPORTATION
JOHN KADANE P.E. INDEPENDENT ENGINEER
DEPUTY DIRECTOR

EL DORADO IRRIGATION DISTRICT
[Signature] 6/5/2020
APPROVED FOR CONSTRUCTION DATE
PROJECT No. WORK ORDER No. DRAWING No.

CONTRACTOR'S LICENSE CLASSIFICATION: Bidders shall be properly licensed to perform the Work
pursuant to the State Contractor's License Act (Business and Professions Code section 7000 et seq.)
and shall possess a CLASS A LICENSE or equivalent combination of Classes required by the categories
and type of Work included in the Contract Documents and Plans. Failure of the successful Bidder to
obtain proper and adequate licensing of the time bids are submitted shall constitute a failure to
execute the Contract, and forfeiture as provided under that section.

Table with 3 columns: MARK, DATE, BY. For recording revisions.



UTILITY REPRESENTATIVES table with columns: UTILITY, REPRESENTATIVE, TELEPHONE. Includes entries for Gas, Electricity, Telephone, Water, Sewer, Drainage, Rescue Fire Protection, and Cable TV.

FUNDING AGENCY

RECORD DRAWING CERTIFICATE

THIS SET OF PLANS, HAVING BEEN REVIEWED BY TLA ENGINEERING AND PLANNING, INC., REFLECTS ALL APPROVED REVISIONS TO THE PROJECT
KNOWN TO TLA ENGINEERING AND PLANNING, INC., AND ALL FIELD DEVIATIONS TO THE PLANNED IMPROVEMENTS BY THE CONSTRUCTION
CONTRACTOR, AS REPORTED TO TLA ENGINEERING AND PLANNING, INC. AS OF [] IT DOES NOT REPRESENT FIELD
VERIFICATION OF PLANNED IMPROVEMENTS BY TLA ENGINEERING AND PLANNING, INC. MONUMENTS HAVE BEEN FOUND OR SET AT ALL BC'S, EC'S
AND ANGLE POINTS IN THE RIGHT-OF-WAY (OR ALONG CENTERLINE IN THE MONUMENT WELLS) BY A LICENSED LAND SURVEYOR, AND AN
APPROPRIATE MAP FILED IN ACCORDANCE WITH THE LAND SURVEYOR'S ACT.



[Signature] 6/1/20
SUBMITTED BY:
CIVIL ENGINEER- KEVIN MAYOL
STATE OF CALIFORNIA NO. C56348
DATE

ENGINEER RCE# DATE

PW NO. CONTRACT NO. 4076 PROJECT NO. 76108
SILVER SPRINGS PARKWAY
OFFSITE
(SOUTH SEGMENT)
COVER SHEET
1 OF 34
DATE: JUNE 1, 2020
SHEET