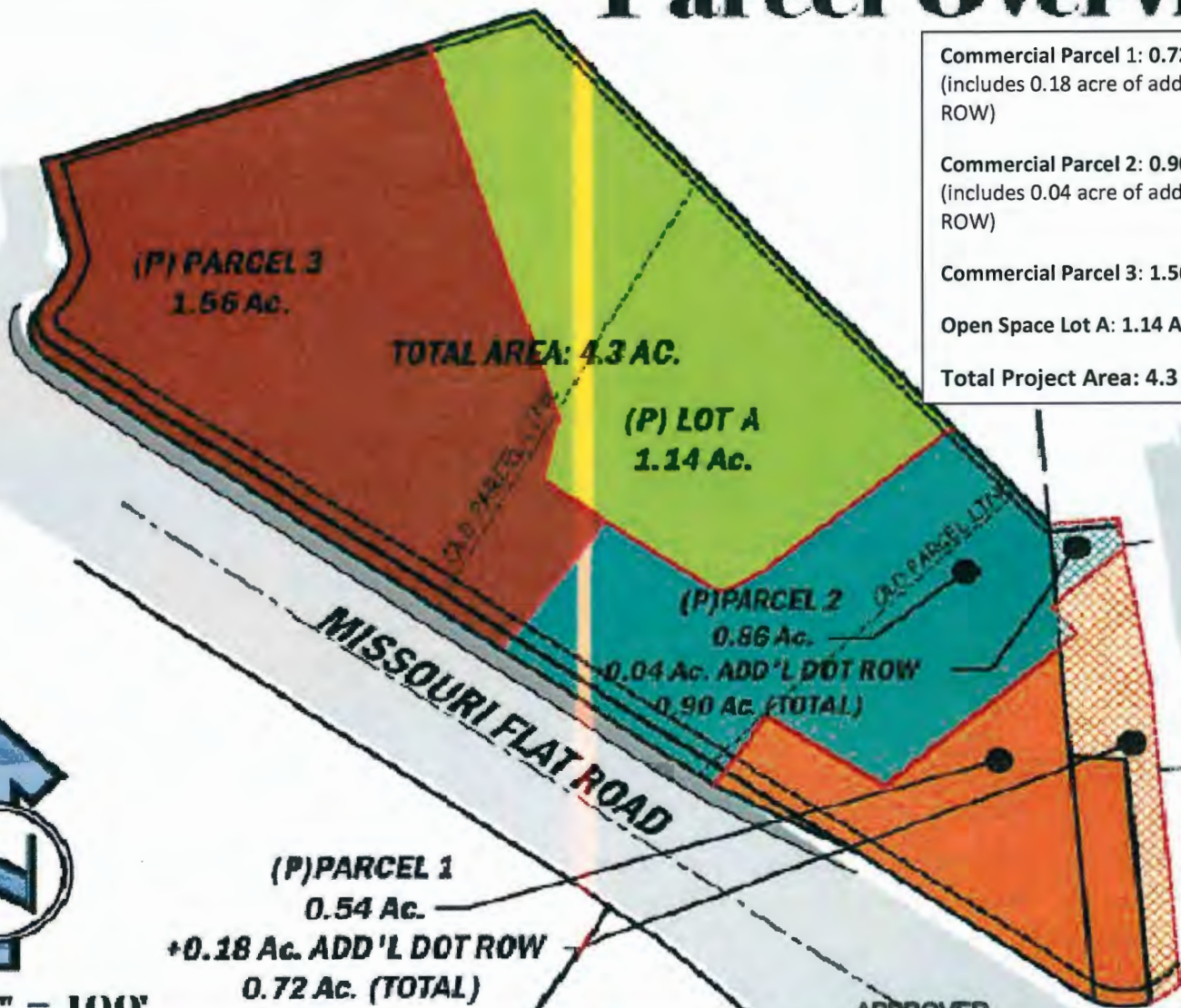


Parcel Overview



Commercial Parcel 1: 0.72 acres
(includes 0.18 acre of additional DOT ROW)

Commercial Parcel 2: 0.90 acres
(includes 0.04 acre of additional DOT ROW)

Commercial Parcel 3: 1.56 acres

Open Space Lot A: 1.14 Acres

Total Project Area: 4.3 Acres

EXHIBIT K

APPROVED
EL DORADO COUNTY
PLANNING COMMISSION
Board of Supervisors
DATE: December 17, 2019

BY: *Tiffany Schmidkas*
EXECUTIVE SECRETARY

