



NO PARKING SURVEY

CAMBRIDGE ROAD

(No. 306)

Vicinity of 3080 Cambridge Road

Reviewed by the Traffic Advisory Committee on SEP 23 2020

COMMITTEE APPROVED STAFF'S RECOMMENDATION.

COMMITTEE REQUESTED FURTHER ACTION.

Action: APPROVED

DEPARTMENT OF TRANSPORTATION
ENGINEERING AND TRAFFIC SURVEY

Location: Vicinity of 3080 Cambridge Road

Subject: No Parking Survey

Date: January 28, 2020

**2020 ENGINEERING AND TRAFFIC SURVEY FOR CAMBRIDGE ROAD
PARKING RESTRICTION**

1. INTRODUCTION

The California Vehicle Code, Section 22505 (along with CVC 22507), allows local authorities to establish Stopping, Standing or Parking Restrictions on County Roadways.

**CVC Section 22505 Stopping Standing or Parking on State Highway Segments
states in part:**

- (a) The Department of Transportation with respect to highways under its jurisdiction may place signs or markings prohibiting or restricting the stopping, standing, or parking of vehicles....
- (1) In areas where, in its opinion, stopping, standing, or parking is dangerous to those using the highway or where the stopping, standing, or parking of vehicles would unduly interfere with the free movement of traffic thereon.
- (b) No person shall stop, park, or leave standing any vehicle in violation of the restrictions stated on the signs or markings.
- (c) This section does not apply to any of the following:
- (1) Public utility vehicles while performing a work operation.
- (2) The driver of any vehicle which is disabled in such a manner and to such an extent that it is impossible to avoid stopping, parking, or leaving the disabled vehicle standing on the roadway. Amended Ch. 455, Stats. 1987. Effective January 1, 1988.”

The California Manual on Uniform Traffic Control Devices (CAMUTCD), Section 2A.06 Design of Signs, CAMUTCD, Section 2B.46 Parking, Standing, and Stopping Signs and CAMUTCD, Section 2B.47 Design of Parking, Standing, and Stopping Signs; have relevant data for parking restrictions on State and County Roadways.

Refer to CVC 463, 587 and CVC Division 11, “Rules of the Road”, CVC 21112 through 22658 regarding the authorities for the various parking, stopping and loading signs.

All “Engineering and Traffic Surveys “performed by the El Dorado County Department of Transportation for establishing speed limits, stop controlled intersections, crosswalks, painted traffic curbs, regulatory traffic signage, and other traffic control devices, use the current publications of the California Vehicle Code, CAMUTCD, California Manual for Setting Speed Limits, applicable County Ordinance Code, and other Civil Engineering publications and California Codes pertaining to the establishment and placement of traffic control devices.

2. ADD PARKING RESTRICTION ZONE ON CAMBRIDGE ROAD

This study was initiated in response to a request by Nancy Allen on behalf of the residents of 3080 Cambridge Road. The parking concern was brought to the attention of The Department of Transportation on June 29, 2019. Vehicles parking on either side of the driveway for 3080 Cambridge Road made egress and ingress difficult for homeowners, as well as postal service. Ms. Allen and the residents of 3080 Cambridge Road are requesting a No Parking zone on either side of their driveway.

During the December 5, 2019 TAC meeting, Carol Russell a resident of 3080 Cambridge Road stated that the sight distance, to the left (North), exiting the driveway was uncomfortable and many residents told her they were also uncomfortable when exiting. She also stated that parked cars were blocking access to their garbage cans and mail person delivery.

GENERAL PHYSICAL CONDITIONS:

Limits:	From a point 840’ north of Estepa Drive to a point 377’ north
Functional Classification:	Major Collector Road
Length:	377 feet
Width:	36 feet
Frontage Improvements:	None
Alignment:	Straight
Surface:	Asphalt surface
Striping:	Centerline and edge line

Cambridge Road is in good condition and is classified as a major collector road by the Federal Highway Administration (FHWA), as depicted by the California Road System (CRS) maps. Cambridge Road is a two (2) lane undivided road with an overall width of 36 feet with shoulders.

RECORD DATA:

The Average Daily Traffic (ADT) is 4,618 vehicles per day approximately 900 feet north of Oxford.

A review of the accident history for Cambridge Road revealed that there has been one (1) accident reported by the California Highway Patrol within the limits proposed in this study on Cambridge Road during the three (3) year period from January 1, 2016, through December 31, 2018.

FIELD REVIEW AND OBSERVATION:

Darryl Brown mentioned during the December 5, 2019 TAC meeting that the October 1st, 2015 Traffic Advisory Committee Meeting had a discussion with representatives from Westlake Manor and Rulison Townhomes concerning parking and sight distance issues.

Numerous site visits were made by Jim Hunnicutt, Sr. Engineering Technician and Darryl Brown, Traffic Superintendent to observe and document parking conditions.

CONTACTS:

Nancy Allen – resident
Carol Russell – resident
Misty Call – resident
Officer Robert Smith – Placerville CHP

FINDINGS AND CONCLUSIONS:

Cambridge Road has been found to have the following:

- Overall road width of 36 feet.
- Roadway is straight.
- Average Daily Traffic 4,618.
- There was one (1) accident reported along this portion of Cambridge Road for the three (3) year period from January, 2016, through December, 2018.
- There is a crest vertical curve at the driveway of 3080 Cambridge Road, with a sag vertical curve to the north of 3080 Cambridge Road.
- Vehicles are parking north, on the west side of 3080 Cambridge Road creating a corner sight distance issue coming out of 3080 Cambridge Road.
- A No Parking Zone on just the west side of Cambridge Road will displace four to seven vehicles to the east side of Cambridge Road. This would create a worsening sight distance issue on the east side of Cambridge Road.

RECOMMENDATION:


1. Based on the findings of this survey it is recommended that the Traffic Advisory Committee approves the request for the “NO PARKING” zone from a point 840’ north of Estepa Drive to a point 377’ north, both sides of Cambridge Road for traffic safety.
2. That the Board of Supervisors be requested to adopt a Resolution, pursuant to Section 10.12.010 of the El Dorado County Ordinance Code, to add Resolution 252-81:

ADD:


“(eg) “No Parking” zone along Cambridge Road (No. 306) beginning at a point 840 feet north of Estepa Drive and continuing north for 320 feet on the west side and 377 feet on the east side.”

3. Subsequent to and predicated on adoption of the above resolution by the El Dorado County Board of Supervisors:
 - a. County staff to be directed to install signage as necessary to reflect the above recommendation.
 - b. County staff advise the California Highway Patrol of the changes and request that they commence enforcement.

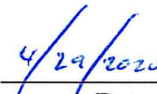
Prepared by: _____


Jim Hunnicutt
Senior Engineering Technician

Approved By: _____


Rafael Martinez, Director
Community Development Services
Department of Transportation

On _____


Date

Attachments: Vicinity Map (1 page)
Vicinity Photos (2 pages)
Detailed No Parking Zone Map (1 page)

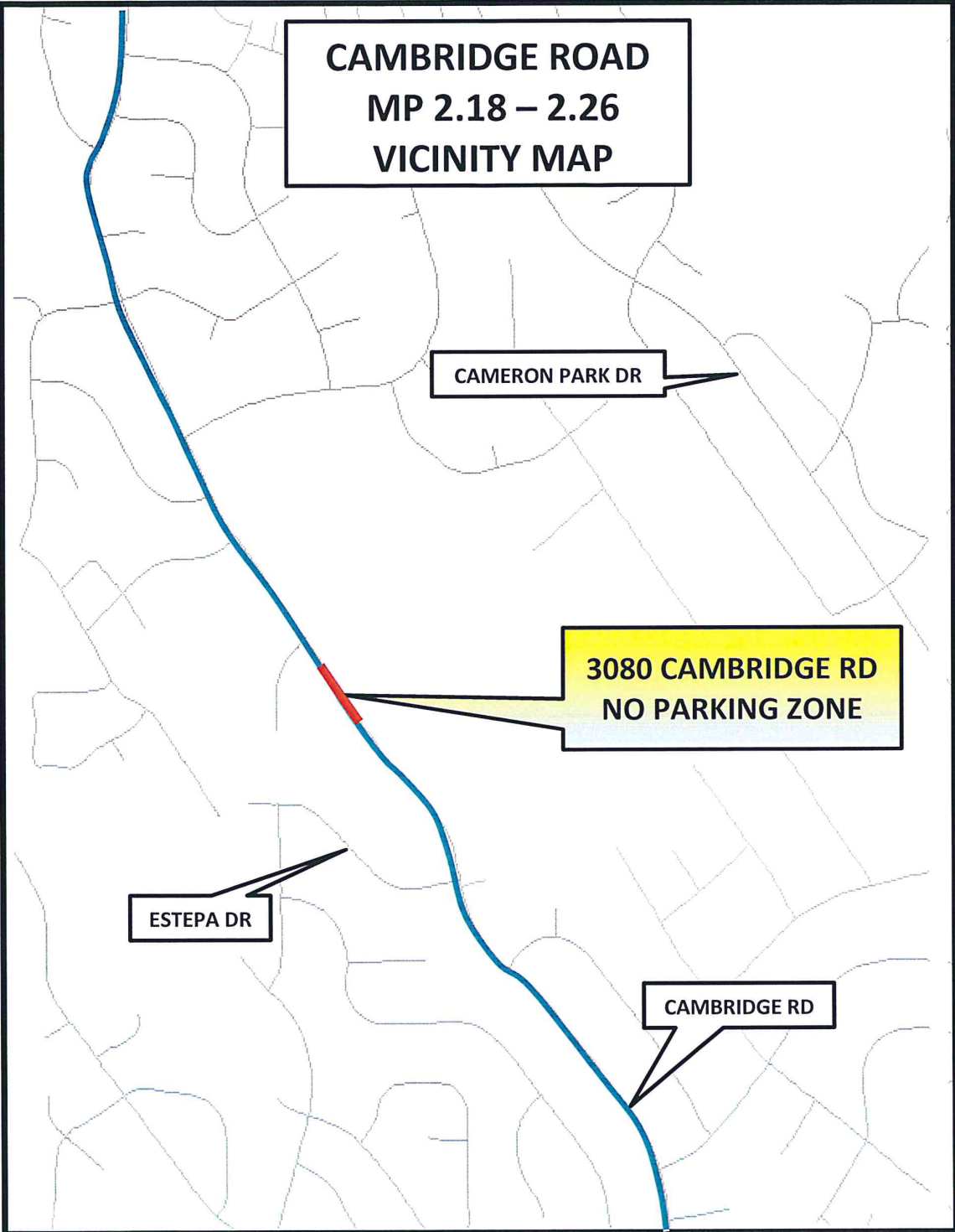
**CAMBRIDGE ROAD
MP 2.18 – 2.26
VICINITY MAP**

CAMERON PARK DR

**3080 CAMBRIDGE RD
NO PARKING ZONE**

ESTEPA DR

CAMBRIDGE RD



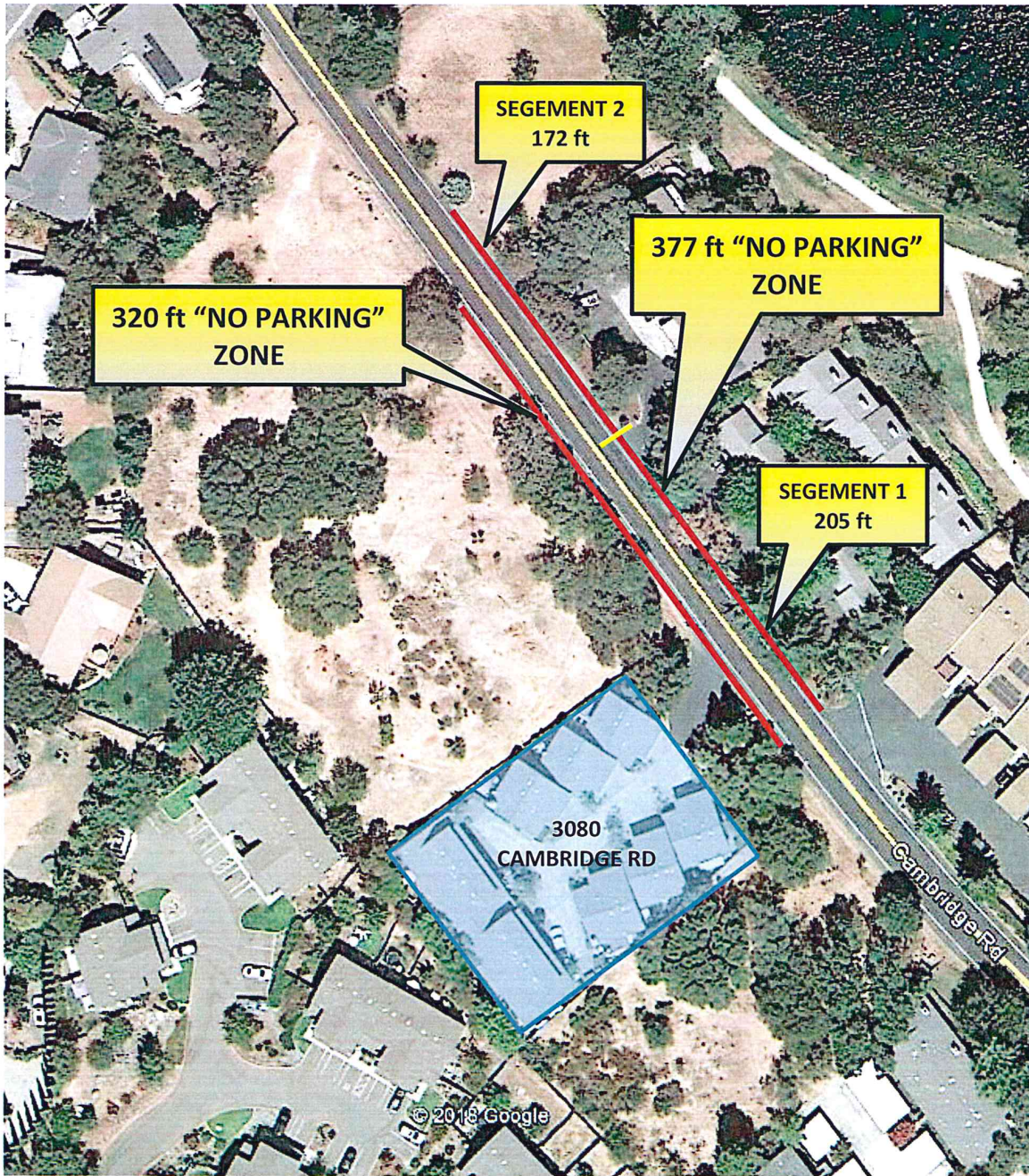
3080 Cambridge Road looking north



3080 Cambridge Road looking south



DETAILED NO PARKING ZONES ADJACENT TO 3080 CAMBRIDGE ROAD



2018 Average Daily Traffic (ADT) 4,525