



COVID-19 UPDATE

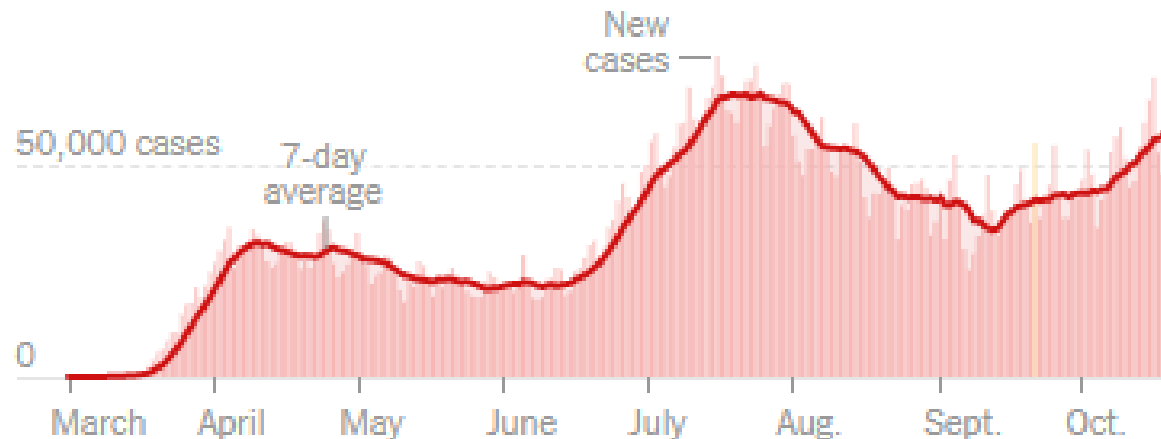
Board of Supervisors' Meeting

Nancy Williams, MD, MPH

Public Health Officer

10/20/2020

COVID in U.S.

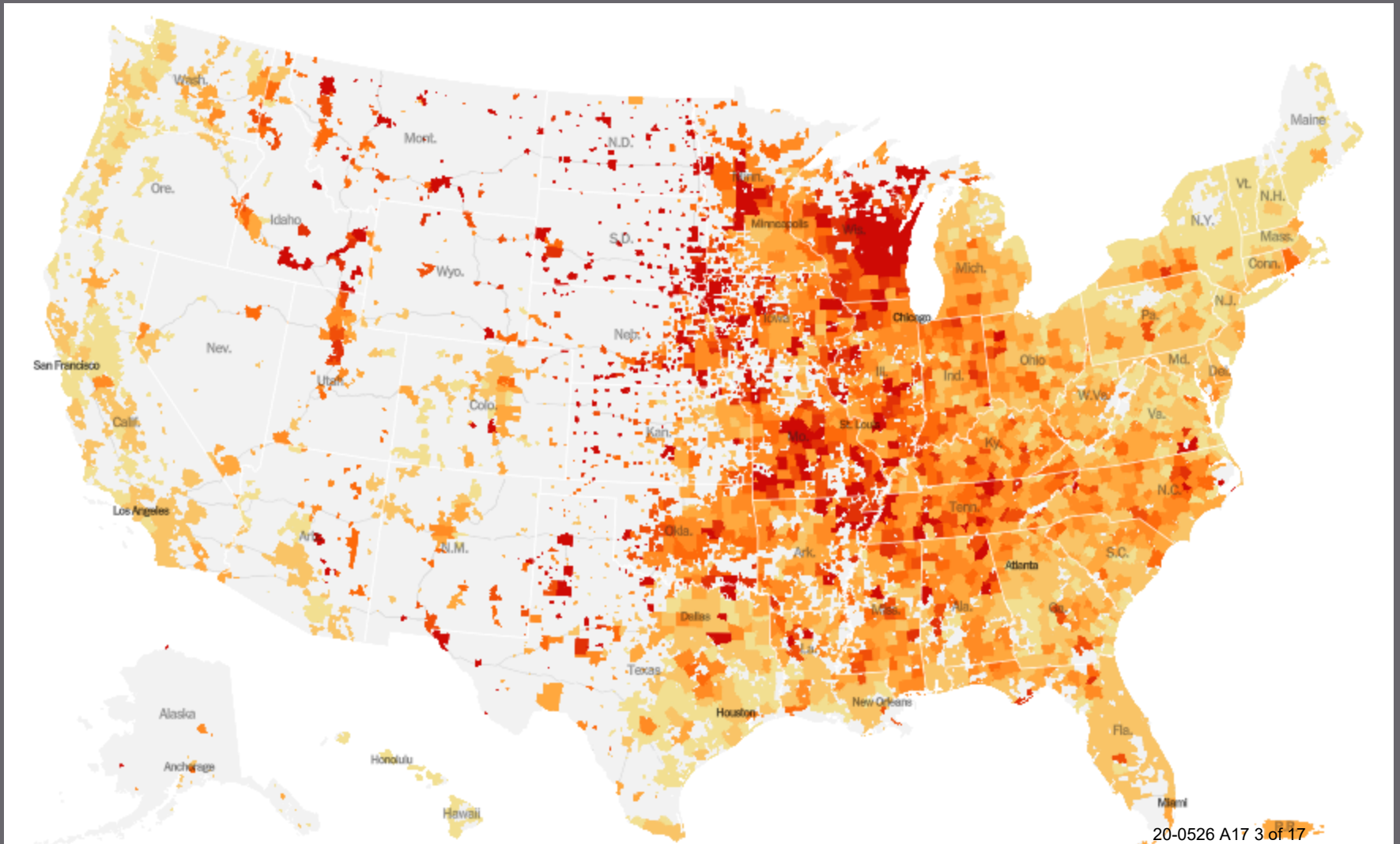


	TOTAL REPORTED	ON OCT. 19	14-DAY CHANGE
Cases	8.2 million+	64,164	+34% →
Deaths	220,058	517	Flat →

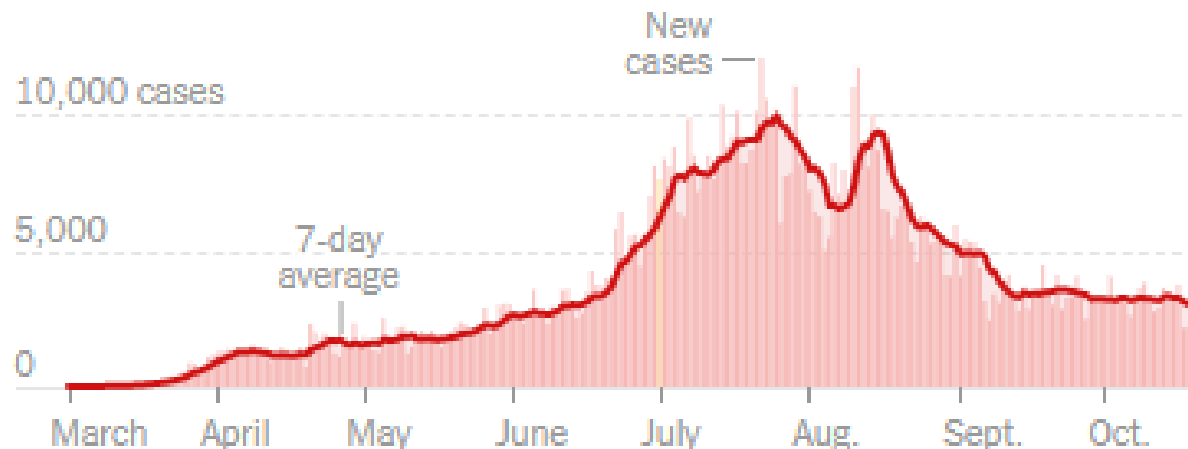
■ Day with data reporting anomaly.

Includes confirmed and probable cases where available. 14-day change trends use 7-day averages.

COVID in U.S.



COVID in California

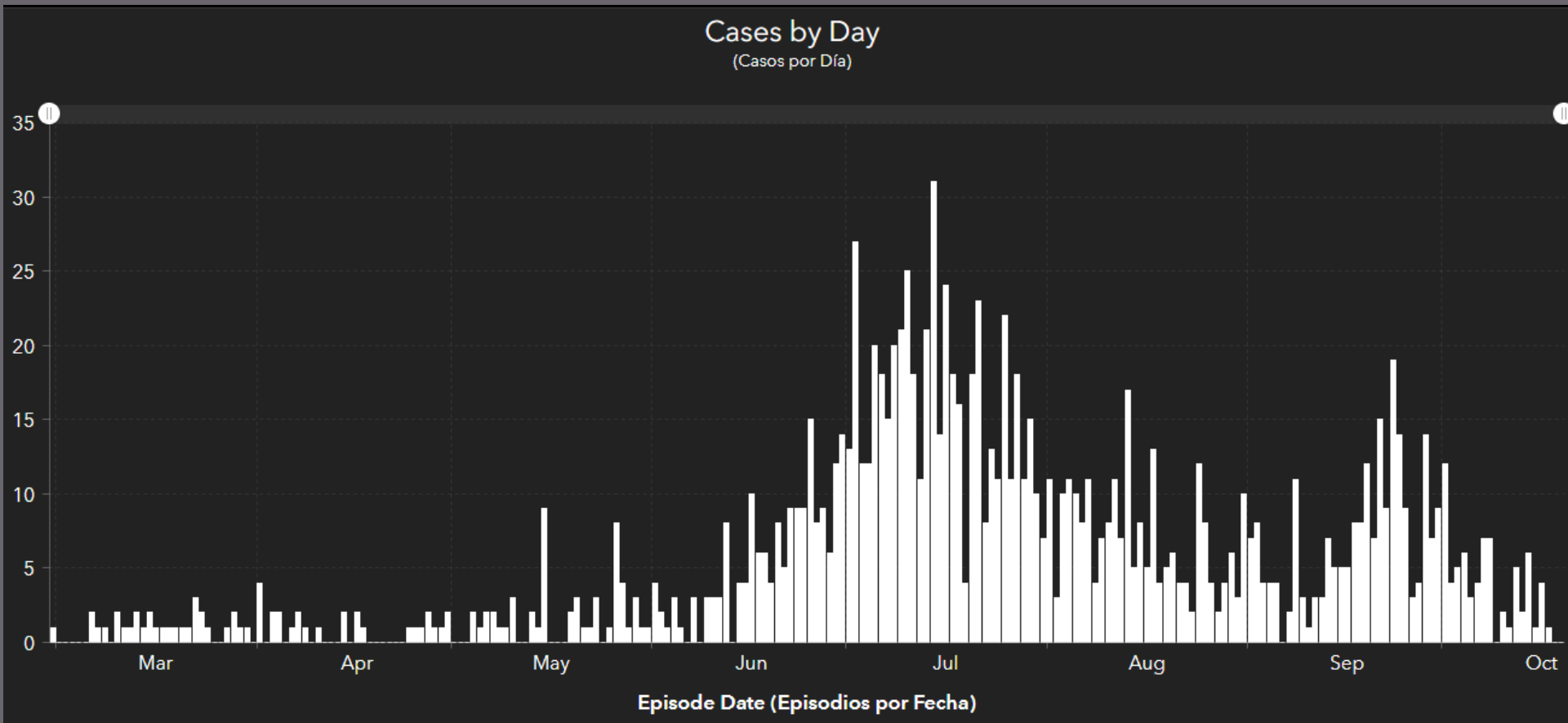


	TOTAL REPORTED	ON OCT. 19	14-DAY CHANGE
Cases	882,665	4,271	-1% →
Deaths	16,987	8	-27% →

■ Day with data reporting anomaly.

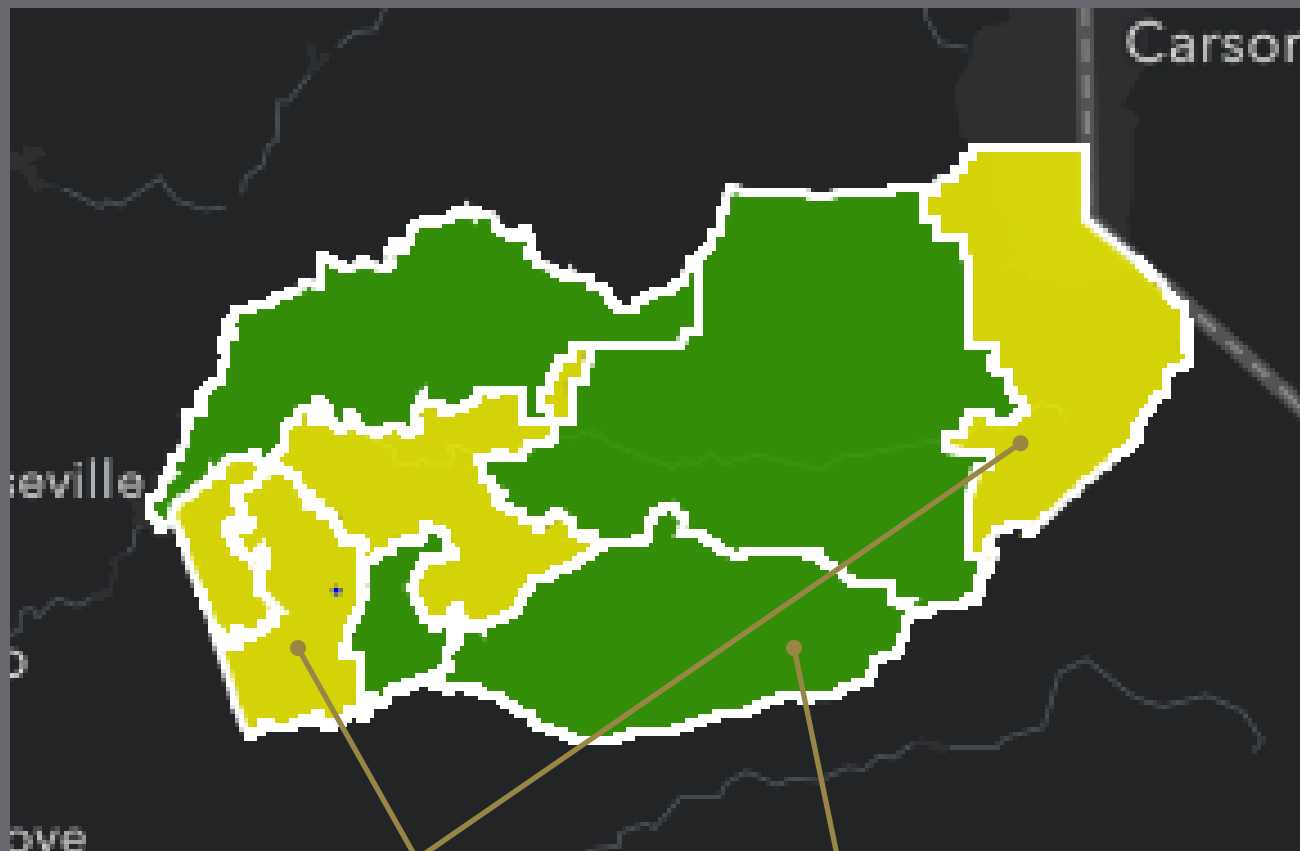
Includes confirmed and probable cases where available. 14-day change trends use 7-day averages.

Overall trend in cases El Dorado County



Recent case rates by region

Last week

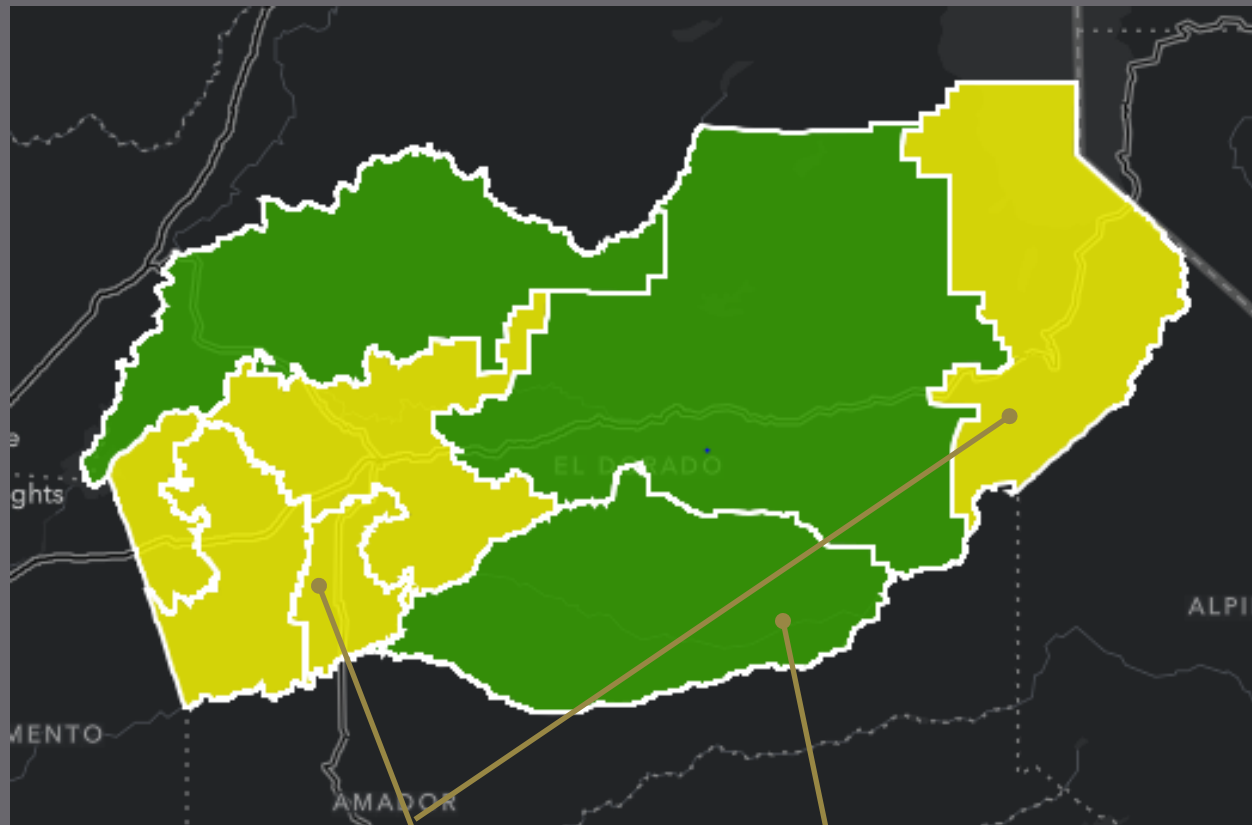


Rates

Medium

Low

Recent case rates by region This week



Rates

Medium

Low

EDC Tier status*

- Assigned Tier: **Orange** (since 9/21, 4th week)
- Assessed Tier: **Orange** (since 10/13, 2nd week)
 - 7-day average daily case rate: **2.1/100,000****
 - 7-day average testing positivity: **1.2%***
 - Lowest quartile Healthy Places Index quartile's 7-day average testing positivity: **1.1%***

(Yellow tier when rate <1.0/100,000
and testing positivity <2%)

* See Blueprint for a Safer Economy (<https://covid19.ca.gov/safer-economy/>)

** 10/19/2020 assessment

Hang in there... stay focused

- COVID situation can change rapidly
- Vaccine not likely to be available until 2021
- Cooler weather will be driving people indoors

Holiday events & gatherings

- Not a good year for extended family gatherings
- Start making alternate plans for Thanksgiving, Christmas, other holidays
- Enjoy the company of your immediate family
- Postpone travel and gatherings

As always: wear masks, limit close contact!

Public Health–EDCOE/Schools Collaboration

- Began many months ago
- Public Health continues to provide:
 - COVID situation updates
 - Help with interpreting CDPH guidance
 - Guidance on how to respond to cases or exposures

District Reopening Decisions

District Superintendents synthesized many factors when proposing reopening plans:

- Public health information
- Teacher, staff, and facility factors
- Numbers and ages of students
- Parent/guardian input
- Assessment of likely compliance with guidelines

District Reopening Decisions

- School Boards were ultimate decision-makers
- Many decisions still ahead
- Currently implementing the early phases of reopening



SCHOOL REOPENINGS AND COVID-19

Lynnan Svensson, MSN, RN, PHN
Public Health Nursing Manager
10/20/2020

School Collaboration

- COVID-19 Cases/Exposures in Schools:
 - Work with School Nurses and Administrators
 - Education
 - Communication
 - Collaboration
 - Isolate ill children, staff, and teachers;
Quarantine exposed children, staff, and teachers
 - Consultation
 - Documentation

School COVID Metrics

- All School Districts open for at least hybrid instruction for ~1 month
 - 1 large district and 1 small for all seat-based, in-person instruction
- Staff screened to date 496/1,347 (36.8%)
 - Reasons for lower numbers
 - Education on process
- 19 schools with documented COVID cases
 - 38 cases total (students, teachers, staff)
 - ~2 documented cases from school exposure

School COVID Metrics cont.

- 30 schools have had 109 students/ staff/ teachers quarantined
 - This includes exposures that occurred at school and for other reasons (i.e. youth sports facility)
- Reasons for exposures:
 - Excessive close contact
 - Lapses in face-covering/ masking compliance
 - Special Needs classrooms
 - Youth Sports
- Strong collaboration and process improvement continues

THANK YOU

