



COVID-19 UPDATE

Board of Supervisors' Meeting

Nancy Williams, MD, MPH

Public Health Officer

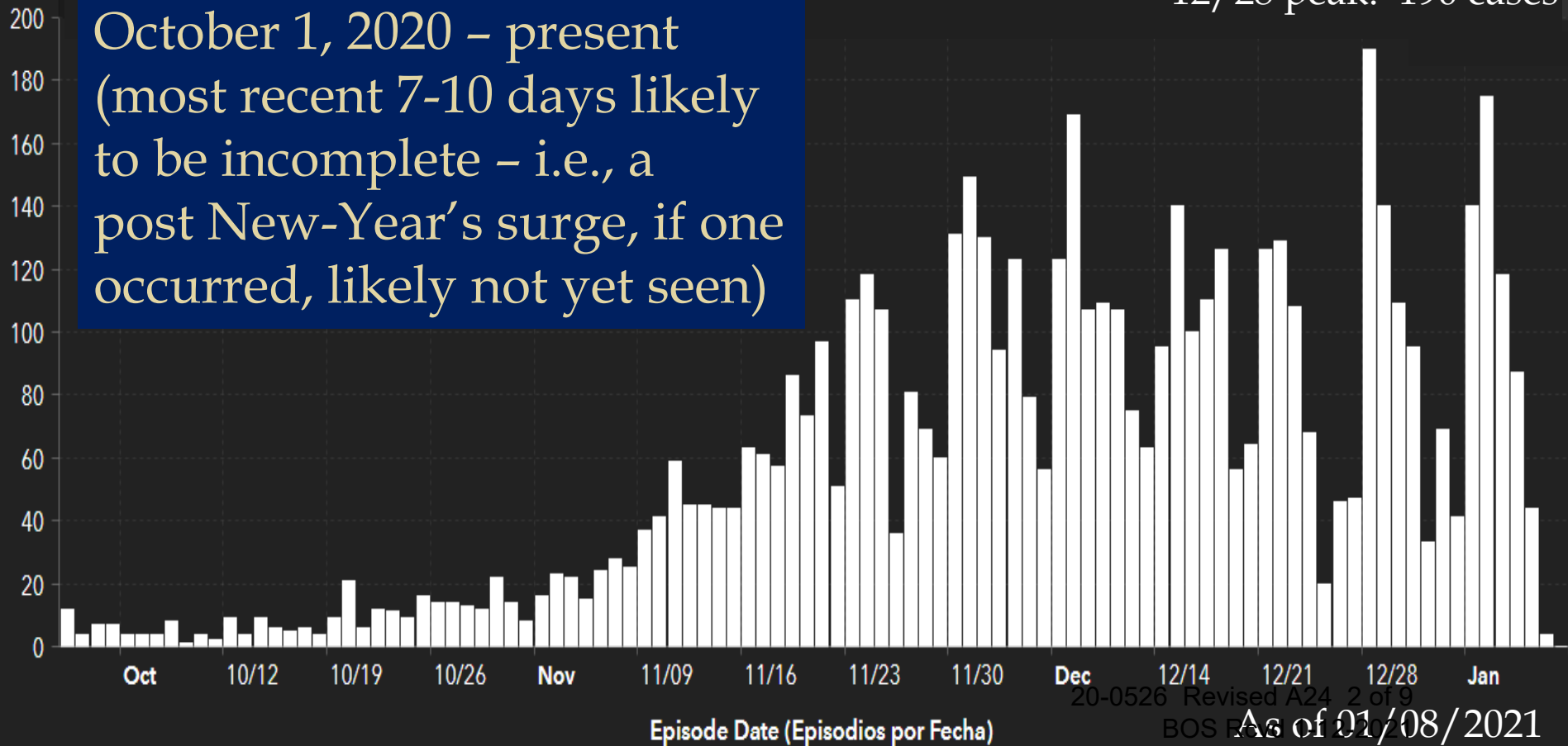
01/12/2021

Recent 3-month trend in cases El Dorado County

Cases by Day
(Casos por Día)

12/28 peak: 190 cases

October 1, 2020 – present
(most recent 7-10 days likely
to be incomplete – i.e., a
post New-Year's surge, if one
occurred, likely not yet seen)



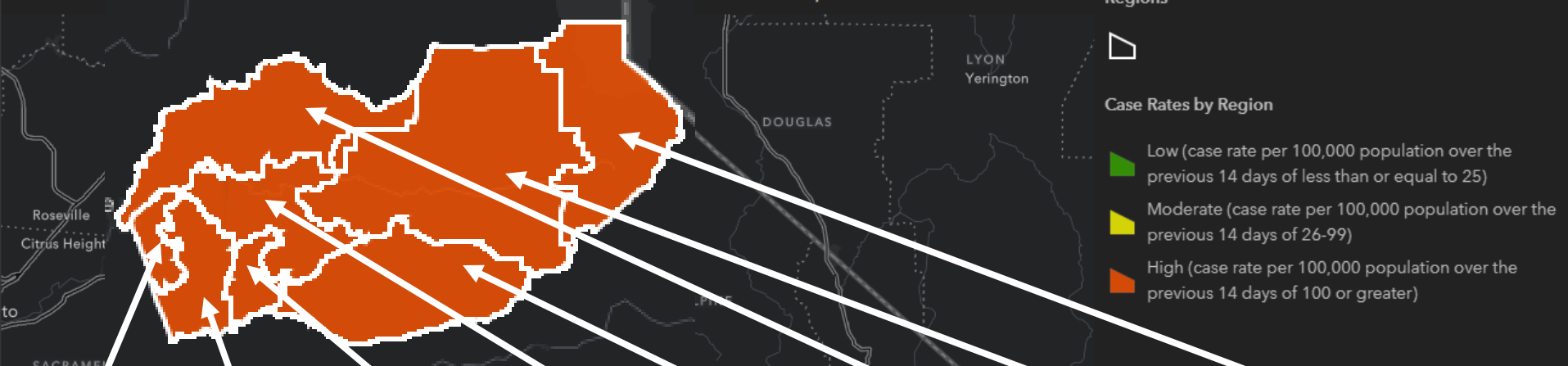


Case rates by region El Dorado County (14-day case totals/100,000)

1/04

↓
1/11

New Cases by Region over the previous 14 days (Casos Nuevos por Región durante los Últimos 14 Días)



<u>EDH</u>	<u>SS/CP</u>	<u>ED/DS</u>	<u>P'ville</u>	<u>SoCo</u>	<u>NoCo</u>	<u>C/PP/K</u>	<u>SLT</u>
447	605	840	1090	222	414	678	450*
↓	↓	↓	↓	↓	↓	↓	↓
407	738	1063	1024	193	470	693	1322*

Note: 100 is ~equivalent to Purple Tier threshold

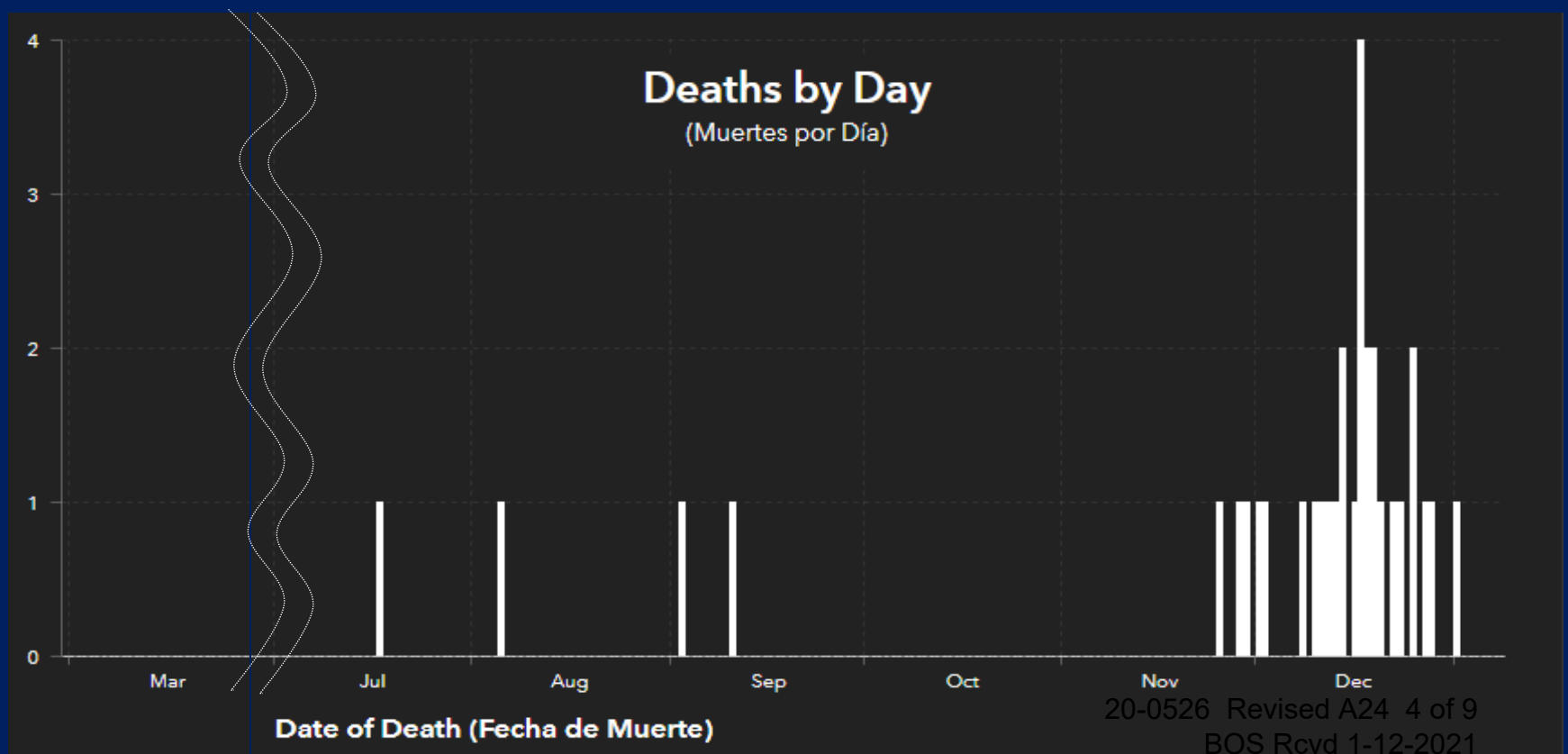
*reporting backlog resulted in low SLT value on 1/4; value on 1/11 includes catch-up counts

20-0526 Revised A24 3 of 9

BOS Revd 1/12/2021
As of 1/11/2020

El Dorado County COVID Deaths

- Total deaths reported through 1/11/2021: 33
- Not including those under investigation



Regional Stay at Home Order

- Please refer to 1/5/2021 Board-of-Supervisors' COVID-19 update and to state's website* for background information
- As of 1/11/2021...
 - Greater Sacramento Region ICU-capacity: 9.4%
 - "Remains under order; four-week ICU capacity projections do not meet criteria to exit order."

COVID-positive patient hospitalizations – EDC hospitals

As of 1/11/2021:

- Hospitalizations: 46
- ICU-hospitalization: 8

EDC Tier status* (this week)

- Assigned Tier:
- Assessed Tier:
 - 7-day average daily case rate:
 - 7-day average testing positivity:

Purple*

55/100,000**

16%**

Up 37%

Last week's (1/04/21) values: 40/100,000
13%

Up 23%

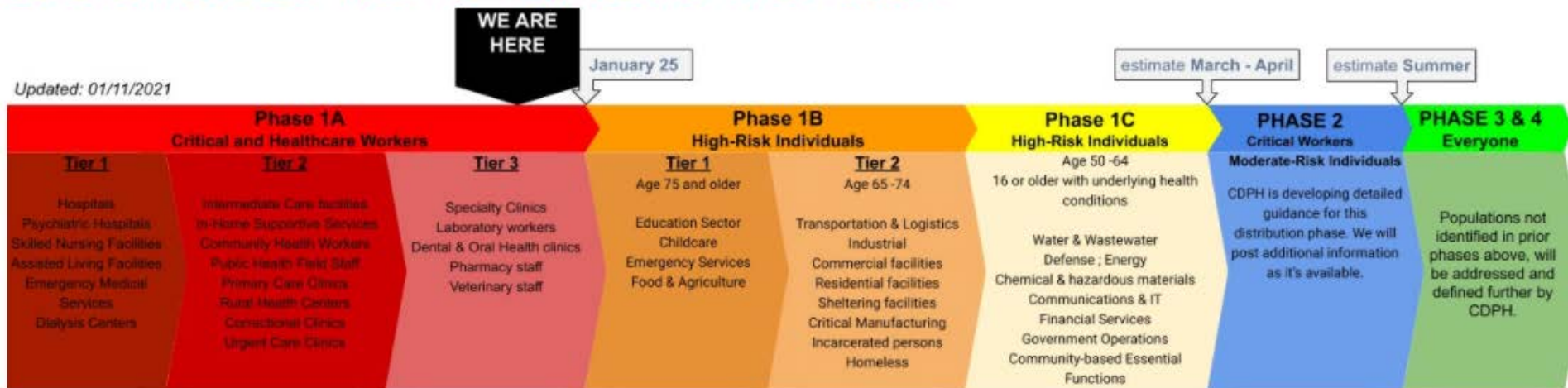
* See Blueprint for a Safer Economy (<https://covid19.ca.gov/safer-economy/>)

** as of 1/11/2021 (unpublished data, adjusted rate;
rate adjusted because #s of tests/day below state avg.
unadjusted rate: 50/100,000;)

Vaccination update

- See EDC COVID vaccine information page* and CDPH guidance** for latest plan details
- Current status: Phase 1a vaccinations (all tiers)

Coronavirus 2019 (COVID-19) Vaccine Information

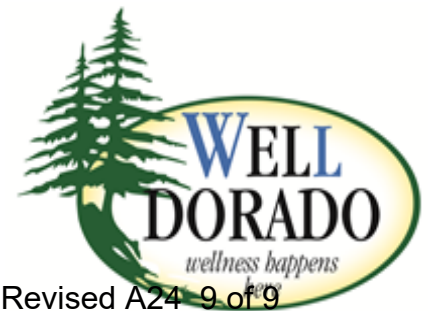


Note: Rate of progression is based on allocations made to El Dorado County by the state. Graphic will be updated as progression is made.

*<https://www.edcgov.us/Government/hhsa/Pages/EDCCOVID-19-vaccine.aspx>

**<https://www.cdph.ca.gov/Programs/CID/DCDC/Pages/COVID-19/CDPH-Allocation-Guidelines-for-COVID-19-Vaccine-During-Phase-1A-Recommendations.aspx>

THANK YOU



20-0526 Revised A24 9 of 9
BOS Rcvd 1-12-2021