



Marshall Medical Center – Covid Review

**Presentation to El Dorado County Board of
Supervisors**

Dr Pete Barba and Dr Martin Entwistle

February 23, 2021

COVID Update

“Rise Up!”

The Story Begins

Dec 30th

The hospital nearly ran out of empty beds.

Then something remarkable happened.

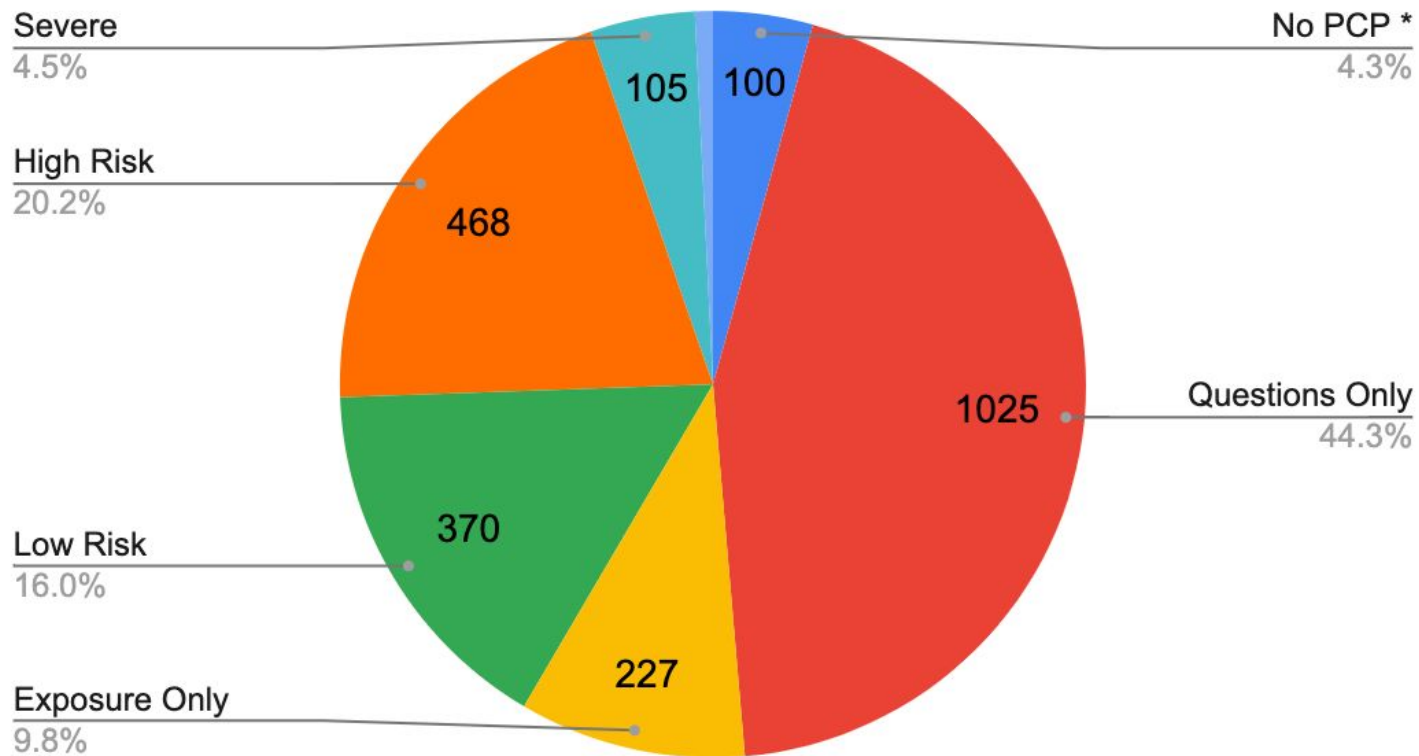
People rose up....

Covid Triage Line

- RN advice line for everything COVID
- 12 hrs/7 days a week
- 3000+ calls since 12/8
- December 28th - Available Hospital Beds - 6
 - Calls to Triage Line - 123
 - High risk /Severely Sick Patients - 40

COVID Triage Line

Total # of Each Type of Call



COVID Surge Clinic

- Drive through clinic with Provider visit & testing
- Started December 16, 2020
- Monday-Saturday
- Most patients served per day: 46
- Total patients served since opening: 1000+

COVID Surge Clinic



COVID Senior Living Strike Team

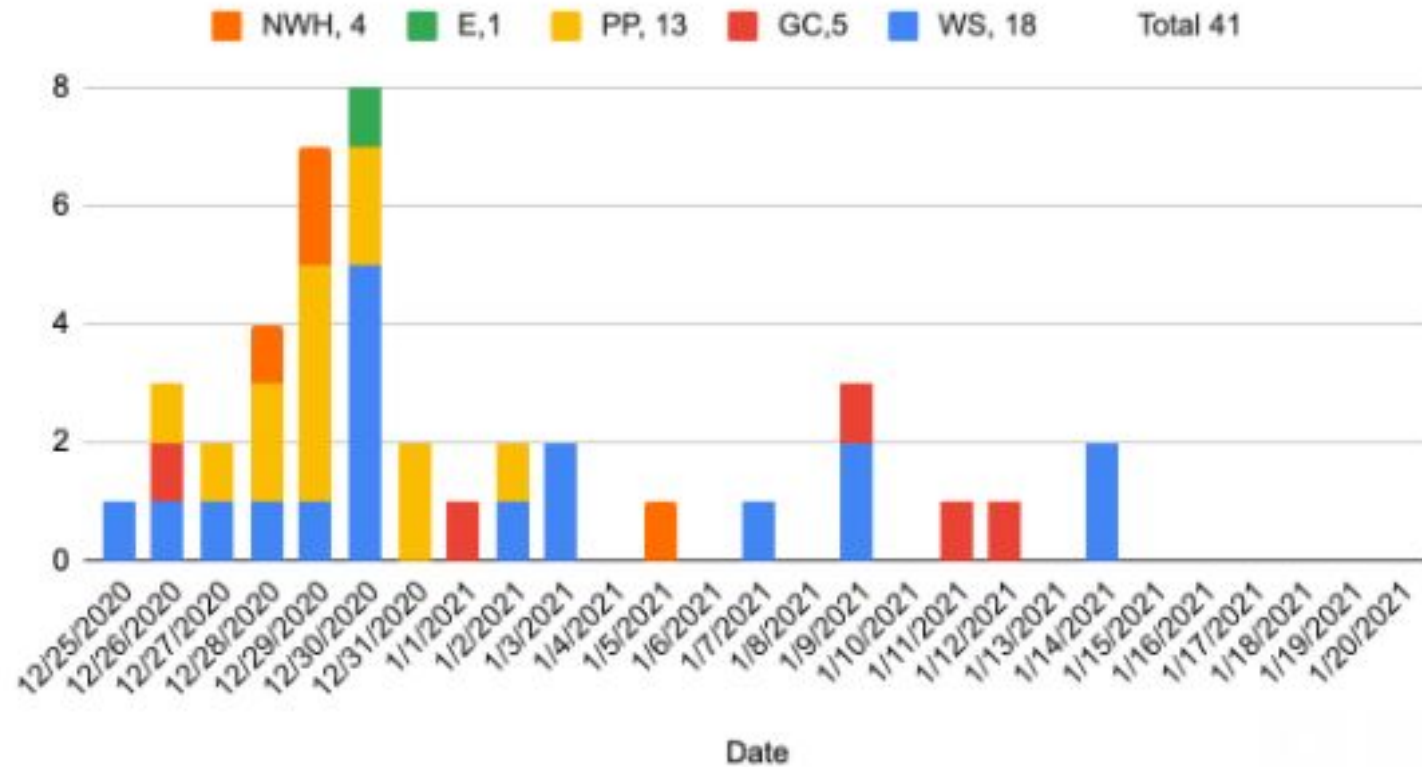
- Assess outbreaks of COVID in Senior Living Homes
- 24/7 availability
- Rapid testing and exam of every patient & staff member
- Triage: Hospital vs. treat in place vs. Hospice
- Able to do Antibody Therapy (even on a Friday night!)

COVID Strike Team

- New Year's Day blitz - 2 beds available in the hospital
- 20 providers (from Family Medicine, Internal Medicine, Podiatry, Cardiology, and Hem/Onc)
- Assessed/tested every patient in 6+ facilities (500+patients)
- 12 hospital admissions averted

COVID Strike Team

MMC Senior Aggregate Community Admissions



COVID Strike Team



Senior Living Team

- Started January 02, 2021
- Daily Rounding in Senior Living Facilities
- Ability to do rapid testing
- Goal: to immediately evaluate patients for appropriate level of care

Senior Living Mass Vaccinations

- January 8th, Feb 5th
- 400+ vaccines, 7 hours
- 6 Care Homes, 1 van in Marshall parking lot
- 20 nurses & physicians
- Last dose given at 8:55 p.m.
- 40+ lives saved

Senior Living Mass Vaccinations



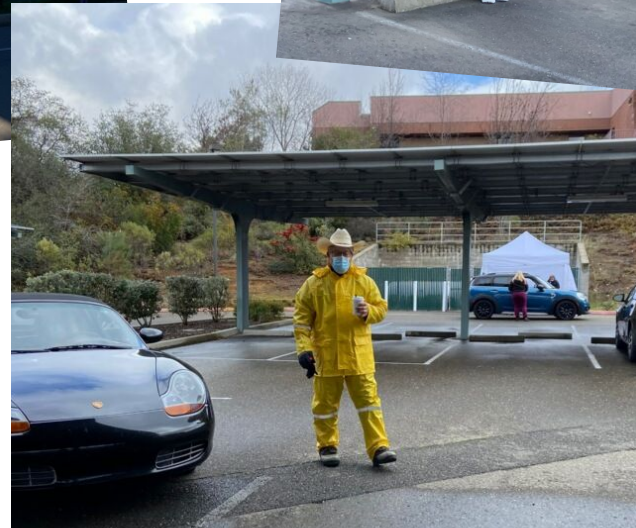
Drive Through Vaccine Clinic

- Week of January 18, 2021
- 1,000 very high risk seniors
- Patients identified via Epic
- 60 cars per hour

Drive Through Vaccine Clinic – Next Steps

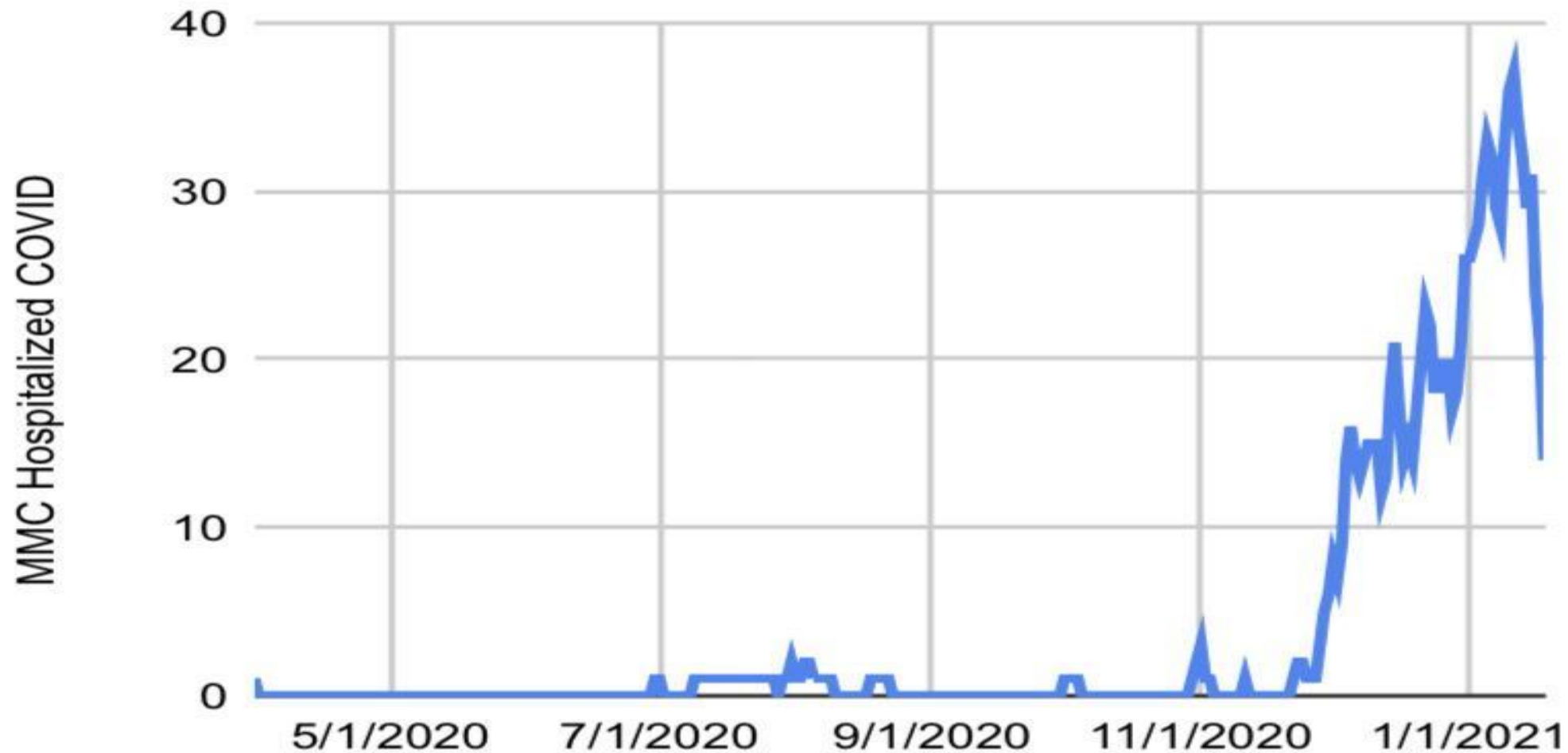
- Could scale up to 1,000 patients per week
- High Risk identified via Epic & providers
- Potential to grow to 1,000 per day
- Dependent on receiving vaccine from County
- Availability of covered drive through area - Fairgrounds?

Drive Through Vaccine Clinic



Meanwhile - Back at the Hospital

MMC Hospitalized COVID



Touch and Go on Bed Availability

- Many staff out due to Covid exposure or illness
- Covid Outbreak in Skilled Nursing Facilities & Senior Living Centers
- Visits to ER increasing - at peak, averaged 8 Covid admissions per day
- Infection control processes necessary, but significant impact on staff and flexible bed use (Can't mix Covid +ve and -ve patients)
- To manage the surge in the inpatient volume and free-up staff:
 - o Cameron Park outpatient surgery closed
 - o Elective surgery, eg, joint replacements, only at the hospital with limited numbers of overnight stays
 - o Early discharge where possible, but challenged by skilled nursing facility access
 - o Hired temporary RN's and RT's

How We Avoided a Crisis

Working as a team across the whole of Marshall, sharing knowledge and resources with other providers, partnering with County and Community agencies

- Central Triage Line to field calls, provide advice and route people to care
- Impact of the rapid access, drive through respiratory clinic
- Availability of rapid Covid testing with antigen kits from the County
- SNF and Assisted Living outreach by Marshall hospitalist and primary care teams - providing ongoing assessment and management
- Institute Advanced Home Health Program for early discharges
- Care including Monoclonal Antibody Therapy - valuable in avoiding admissions
- Involved Hospice early and partnered with Snowline

Partnering with the EoC on Vaccination Plans

Marshall has connected with the EoC to assist with the County's Vaccination Plans

We are using our ability to identify higher risk individuals in the following cohorts:

1. Highest risk 65+ (Risk Score 6 =<) - already underway
2. Higher risk 65+ (Risk Score 5 =<) - upcoming*
3. All 75+ (All risk) - planning underway
4. All 65+ (All risk) - planning underway

Challenges we are addressing:

- Limitations on vaccine availability
- Management of Outreach
- Logistics
- Planning and collaboration to best support the County's vaccination objectives

Contribution to Homeless Action

Marshall took the lead in managing the County's Homeless Covid action (n ~ 620)

- Phase 1 - Active outreach, education and support to keep people in place
 - Marshall, Barton, EDCSO, PV PD, SLT PD, Volunteers
- Phase 2 - Project Roomkey - Sheltering the medically vulnerable homeless
 - Introduced navigation process as pathway to transitional housing
- Phase 3 - Planning for a surge
 - Success to date, in avoiding an epidemic in the homeless population

What We've Learned

- Challenges
 - Staffing, notably RNs and RTs, and staff fatigue
 - Supplies - PPE, test kits and reagents, vaccines
 - Impact of limited routine clinical work - medical and financial
 - Potential limitations on overflow beds (Sleep Train Arena?)
- Learning Points
 - Importance of collaboration
 - Importance of communication internally and externally
 - Commitment, flexibility, adaptability, rapid action
 - It's all about the people

Next Steps

- Maintain and flux up and down current processes
- Shift focus to vaccines as able
- Put the same energy into organization goals
 - Breast Cancer Screening
 - Colon Cancer Screening
 - Diabetes Management
- Get back to routine care and elective procedures
- Remain alert in-case of a further surge

EDC Request

- Continue to Lead by example-
 - Masking, social distancing despite vaccine
- Encourage EoC to recognize that MMC can play a role in vaccine distribution
- Help publicize the success that Marshall has had in protecting our community
- Recognize those who have individuals who have gone above and beyond

Kudos

To the hundreds of staff and providers who gave up their nights and weekends, the comfort of their usual role, their health and safety, their nice warm and dry office to serve those who needed it the most.