

WELCOME



INTERNATIONAL MOUNTAIN BICYCLING ASSOCIATION



Agenda

Introduction

Why trails are important and the benefits they bring to a community

Why Mother Lode Trail Stewardship

Local EDH Opportunities



Our Mission:

To create, enhance, promote and preserve trails and trail experiences for
all recreational users in and around El Dorado County



Board Members

- Clint Classen
- Melissa Padilla
- Deidra Liske
- Jared Kessler
- Tyler Belarde
- Dane Petersen
- Ethan Koenigs





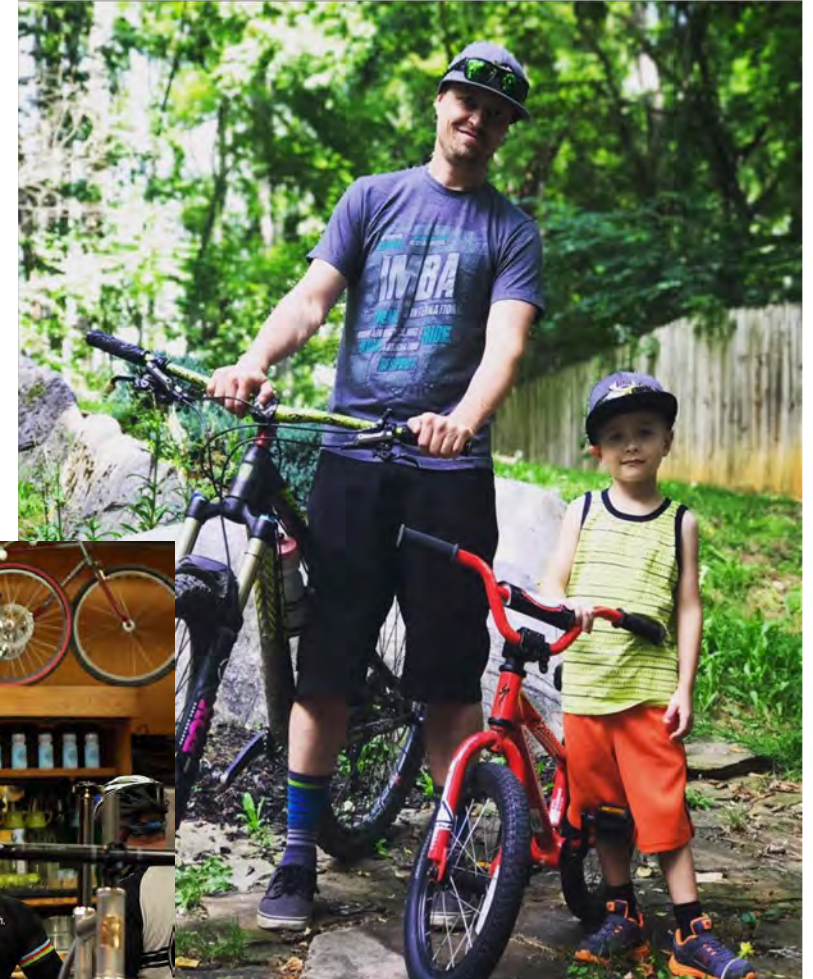
Organization Status

- Non Profit – 501 (c)3
- IMBA Chapter
- Social Media



Why Trails?

- Trails support an active lifestyle
- Access to trails makes for a desirable place to live
- Recreational amenities increase community value
- Proven economic benefits



Places to Ride

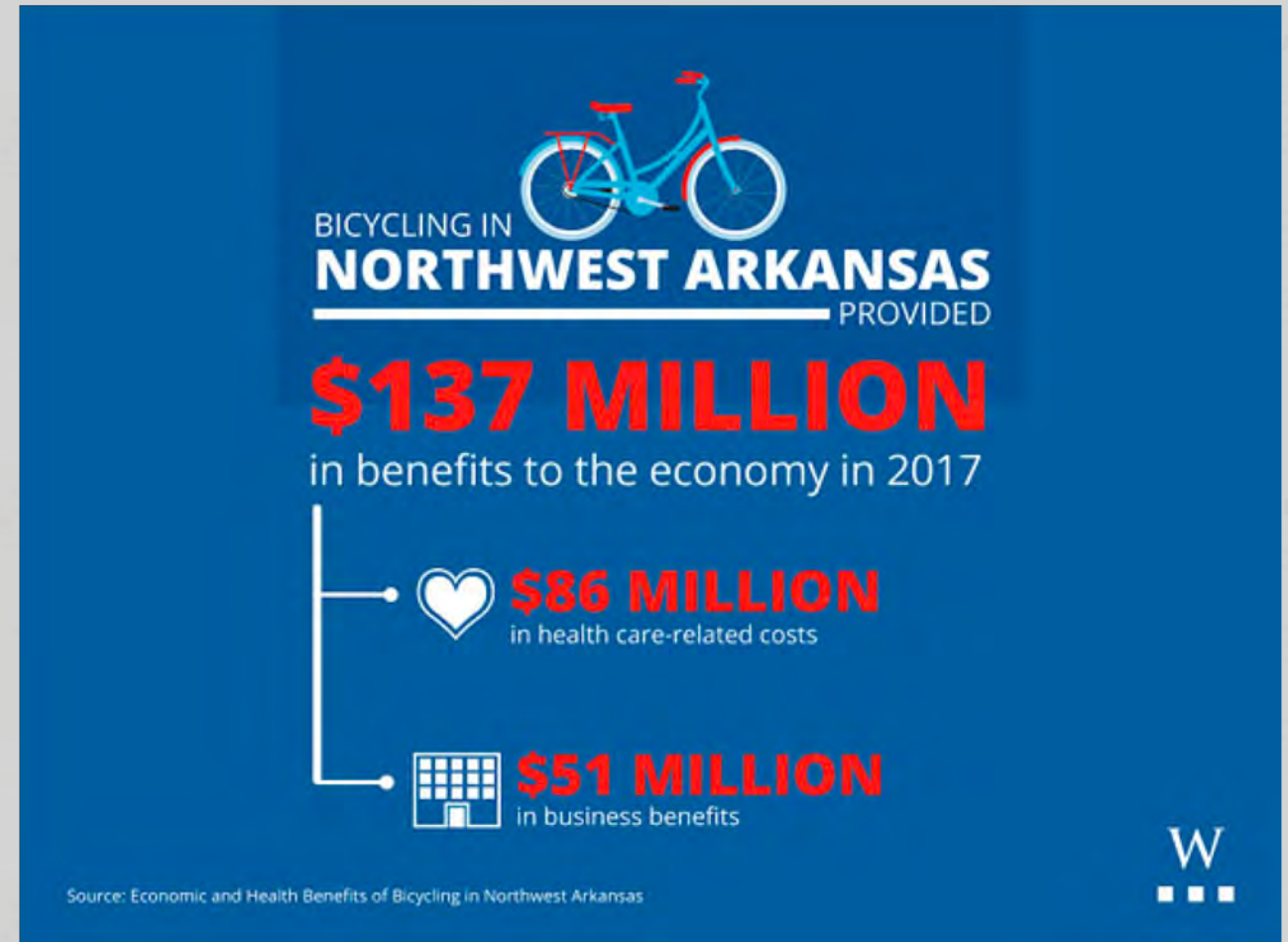
Outdoor Recreation is BIG Business



<https://outdoorindustry.org/advocacy>



Economic Benefit Case Study





What Do Trail Users Want?

Access

Exercise

Escape

Experience Nature

Challenge



Sustainable Trails

What Are Sustainable Trails?



A sustainable trail allows users to enjoy a natural area with minimal impact to the ecosystem and continues to meet the management objectives.

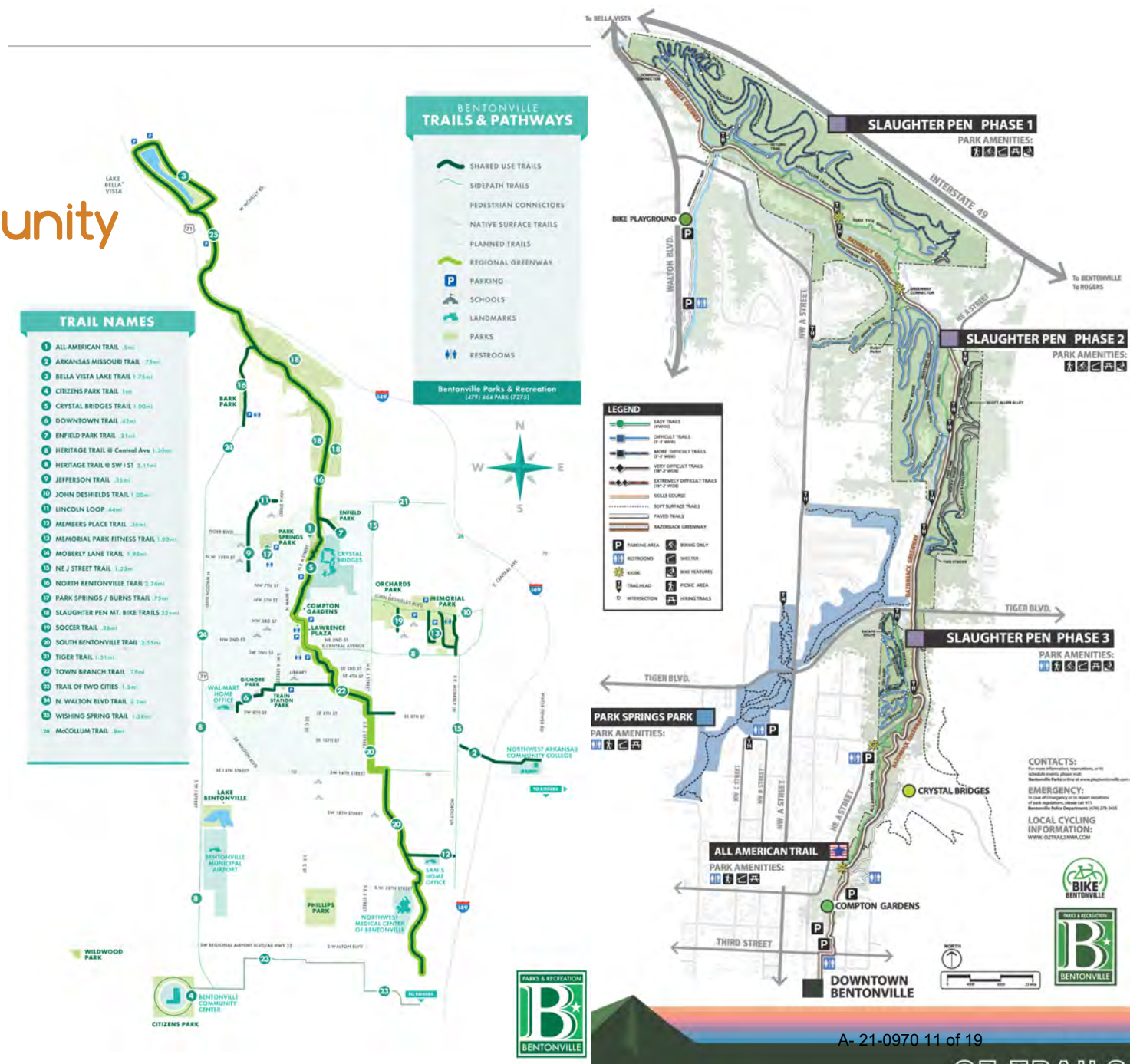
- Allows visitors to achieve their recreation goals.
- Protects resources.
- Minimizes maintenance requirements.
- Minimizes conflict between visitors.
- Increases the capacity of the land for enjoyment with minimal negative impacts



Model Trail Community

Recipe for a Model Trail Community

- Plan It
- Design It
- Build It
- Activate It
- Promote It
- Measure It





Activate It

Community Impact

- Mountain biking can help drive an active economy, improve public health outcomes, attract tourism, help retain and recruit businesses and the creative work forces they seek.
- But those 'impacts' won't happen if your community is not involved.

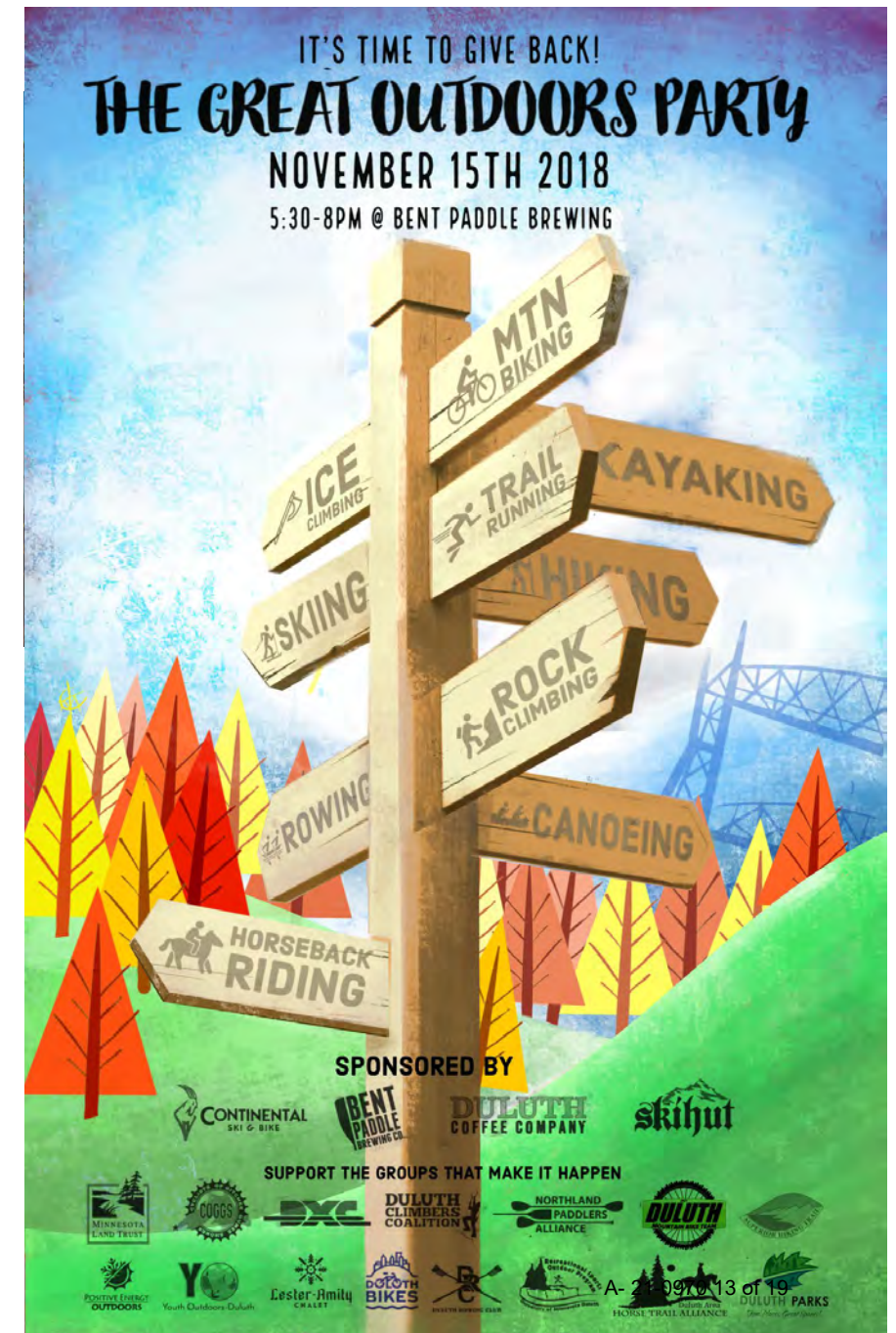


Activate It

Create the Experience!

Like any other demographic, mountain bikers look for certain amenities & assets that make a community a destination:

- Spectrum of accommodations
- Amenities - restaurants, shopping, bike shops, gear and service
- Music and arts culture adds to the vibe!
- Connectivity is key
- Most mountain bikers also like to hike, paddle, fish, etc.





Why Mother Lode Trail Stewardship

Other local groups are already spread thin and there is a backlog of maintenance and limited resources for new trails

We need a group that engages the larger community and focuses on improving trail opportunities and promoting riding in El Dorado County

Clearly a demand for new trails as evidenced by the number of unofficial trails

Trail-based recreation is growing in popularity

More local youth NICA opportunities





Amazing local potential





Building Community

Host trail / outdoor recreation events

Partner with local businesses to build trail community

Support NICA High School Mountain Bike teams

Collaborate on promoting outdoor recreation in El Dorado County



El Dorado County Opportunities

Create **Connectivity** between existing trails, businesses and other local amenities. Develop **Trail Opportunities Map**

Remaining open space corridors

Marble Valley

Folsom Lake SRA Brown's Ravine

Cronan Ranch skills park

Kanaaka Valley - BLM

Red-Shack Trail Area - BLM

Eldorado National Forest

Pollock Pines Bike Park

El Dorado Trail

Pony Express Trail

American River Conservancy

EID Sly Park Area

Sierra Pacific Industries



COMMUNITY PLAN

for LIME ROCK VALLEY and
THE VILLAGE OF MARBLE VALLEY

LEGEND

Residential

- LDR Low Density Residential (1 Ac. Min. Lot Area)
- LDR Low Density Residential
- MDR Medium Density Residential
- HDR High Density Residential

Commercial

- OP Office Park
- VC Village Commercial

Public Facilities

- PU Public Utilities
- PS Public School
- VP Village Park
- P Neighborhood Park

Agriculture/Open Space

- AT Agriculture Tourism (Viseyards)
- OS Open Space
- POS Public Open Space (Foundation Park)

Circulation

- EVA Gated Emergency Vehicle Access
- Trails

