

2021 REDISTRICTING

*El Dorado County
Public Meeting #2
August 4, 2021
6:00 PM*

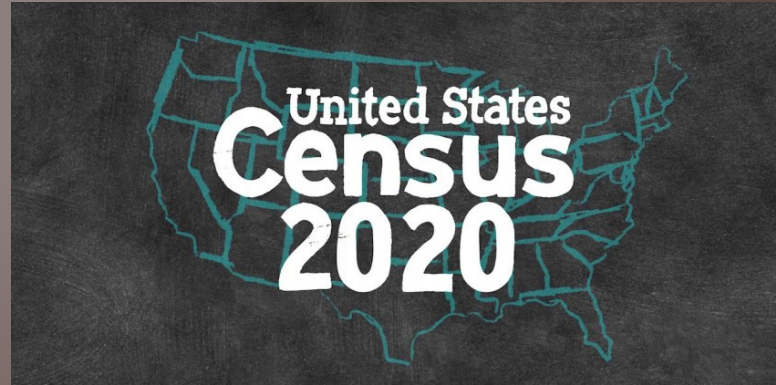
WELCOME!

OUR AGENDA
FOR TODAY:

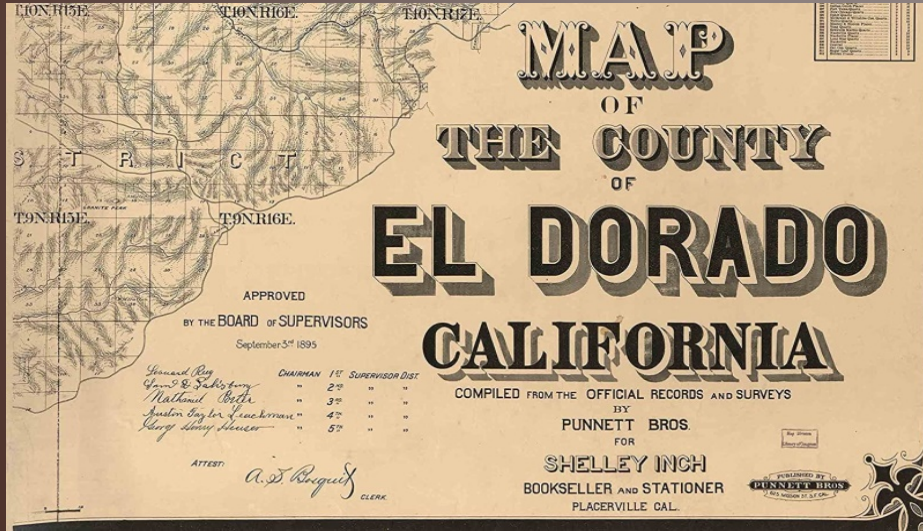
- *Introduction: What is redistricting?*
- *Process Overview: Timeline for drawing a new map*
- *Communities of Interest mapping demonstration*
- *Questions/Discussion*

WHAT IS REDISTRICTING?

- The United States Constitution requires a count every ten (10) years of everyone residing in the United States.
- After the Census, district boundaries are redrawn to ensure that districts are substantially equal in population.
- In El Dorado County, this process is conducted for Board of Supervisors Districts – those that represent you locally.



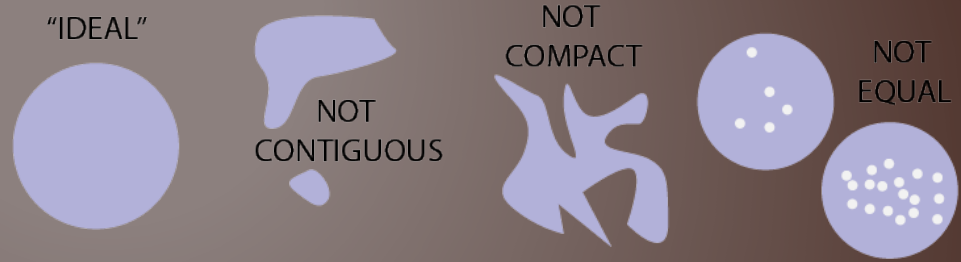
REDISTRICTING OVERVIEW



- Follows guidelines of FAIR MAPS ACT
- Uses 2020 Census Data (when released, we don't have it yet!)
- Community of Interest Outreach can begin prior to receipt of census data and drawing of maps to provide outlines of process

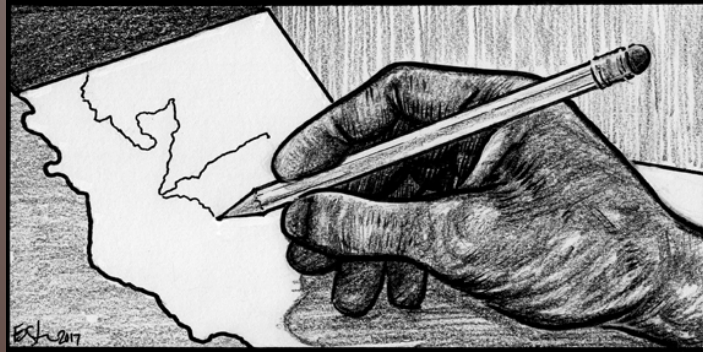
MAPPING FACTORS IN ORDER OF PRIORITY:

1. Geographic contiguity
2. Geographic integrity of neighborhoods and local communities of interest.
3. Geographic integrity of cities or census-designated places.
4. Natural and artificial barriers, including streets and boundaries of the county when practicable.
5. Boundaries should be easily identifiable and understandable by residents, and bounded by natural and artificial barriers.
6. Geographical compactness.



OTHER RULES:

- District boundaries must comply with the United States Constitution, the California Constitution, and the federal Voting Rights Act of 1965.
- Lines CANNOT be drawn for the purpose of favoring or discriminating against a political party.
- Additional criteria can be considered, as long as they are not in conflict with or outweigh the criteria required by the State and Federal laws.



COMMUNITIES OF INTEREST

We can't draw a map yet, since the data has been delayed to September 30, 2021. However, we CAN collect information on communities of interest.

Q: What is a community of interest?

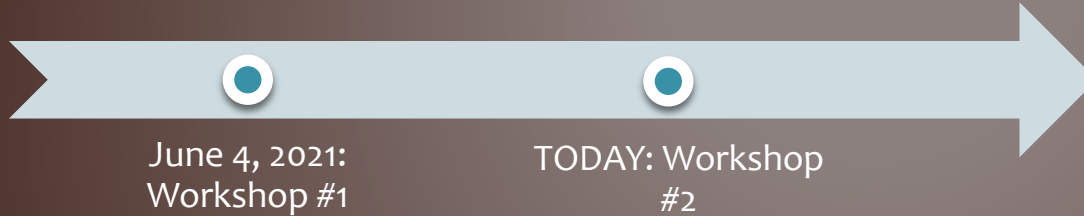
A: A population that shares common social or economic interests that should be included within a single supervisorial district for purposes of its effective and fair representation. Communities of interest do not include relationships with political parties, incumbents, or political candidates (Election Code 21500 (b)(2)).

Q: Why is a community of interest important?

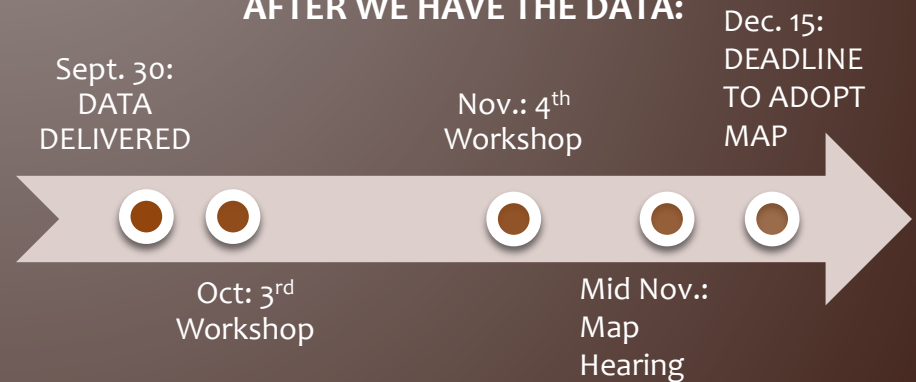
A: Keeping communities of interest together is an important principle in redistricting for governmental representation. Community members can define their communities by telling their own stories and describe their concerns to policy makers. What do you and your neighbors share in common? What makes your group unique compared to the surrounding areas?

PROCESS TIMELINE

PRE-CENSUS DATA – COMMUNITY OF INTEREST INPUT:

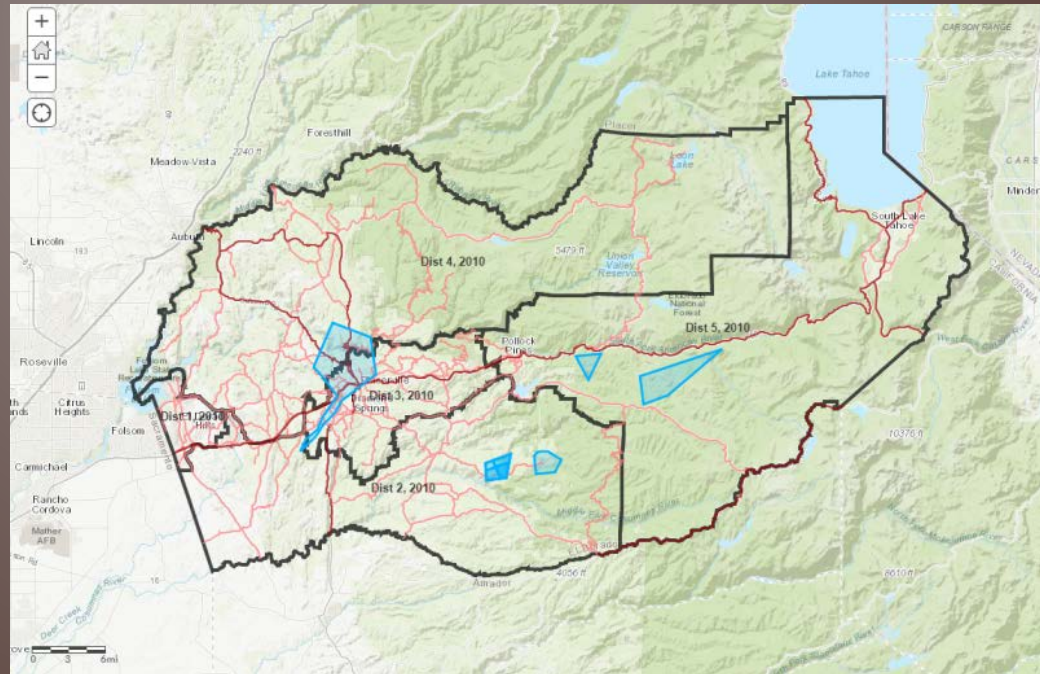


AFTER WE HAVE THE DATA:



COMMUNITIES OF INTEREST

*Map
Demonstration:
Top 8
Communities of
Interest
Boundaries for
Consideration
and Public
Discussion*



PUBLIC INPUT AND DISCUSSION

