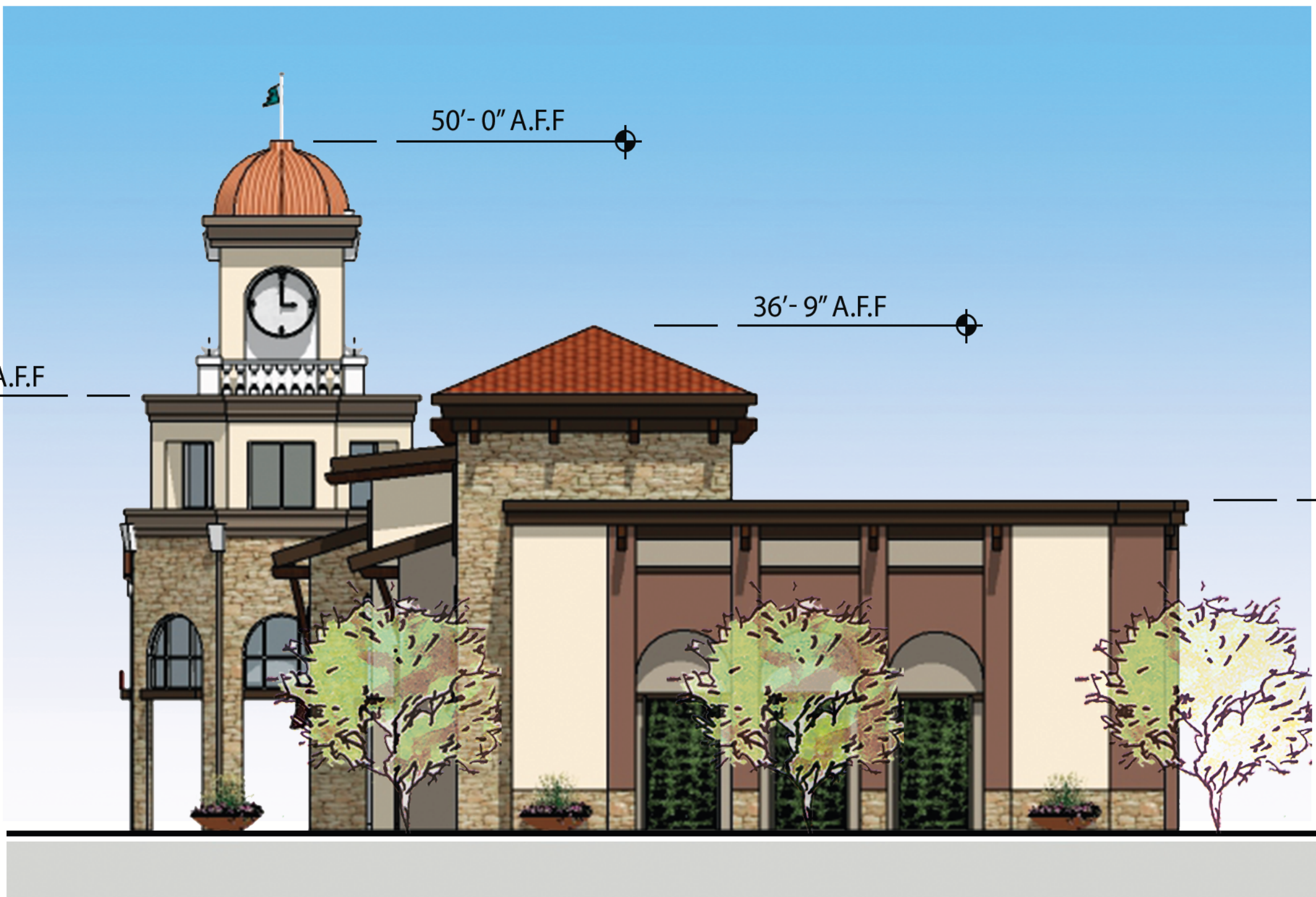


West Elevation



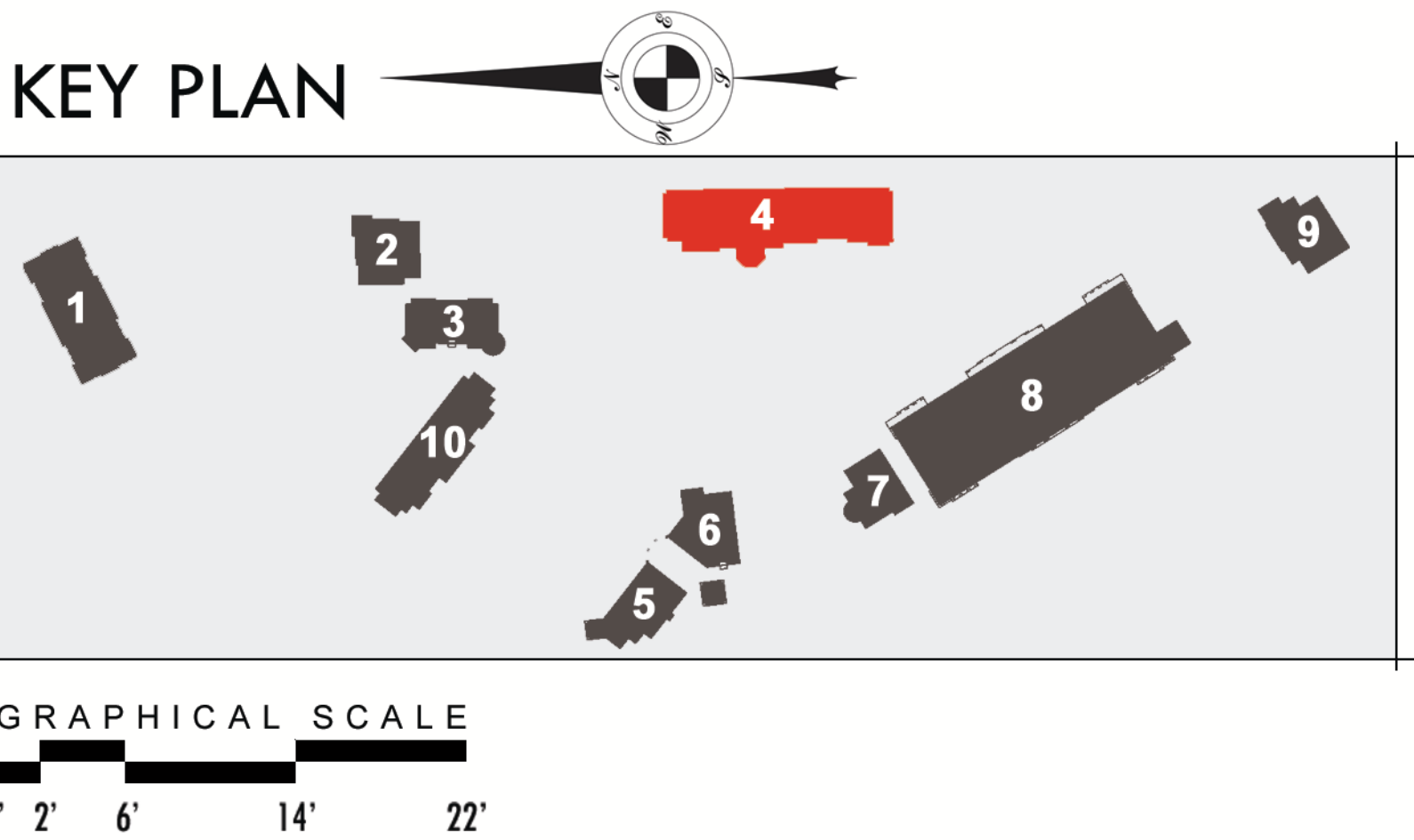
North Elevation



South Elevation

EXTERIOR MATERIALS & FINISHES

P-1	DUNN EDWARDS #6049	"CHAPS"	(PAINT)	S-1	EL DORADO STONE - PONDEROSA CLIFFSTONE	(STONE MASONRY)
P-2	DUNN EDWARDS #5322	"PALE PEARL"	(PAINT)	R-1	REDLAND CLAY TILE CO. - BAJA MISSION TILE	(ROOF TILE)
P-3	DUNN EDWARDS #5359	"CROSSROADS"	(PAINT)			
P-4	DUNN EDWARDS #5188	"RUDDY OAK"	(PAINT)	FA-1	SUNBRELLA COLOR #8631 "BURGANDY"	(FABRIC AWNING)
P-5	DUNN EDWARDS #6220	"POROUS STONE"	(PAINT)	FA-2	SUNBRELLA COLOR #8637 "FOREST GREEN"	(FABRIC AWNING)
P-6	DUNN EDWARDS #6350	"DARK ENGINE"	(PAINT)	FA-3	SUNBRELLA COLOR #8608 "BLACK"	(FABRIC AWNING)
P-7	SHERWIN WILLIAMS #7100	"ARCADE WHITE"	(PAINT)	FA-4	SUNBRELLA COLOR #8621 "TRUE BROWN"	(FABRIC AWNING)

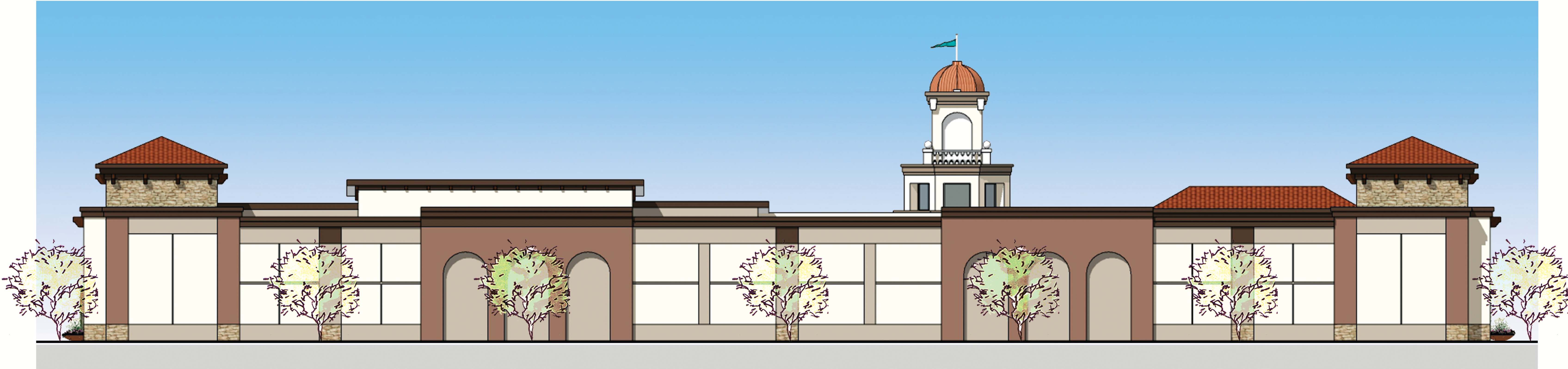


MONTANO DE EL DORADO

CONCEPTUAL ELEVATIONS

BUILDING-04 A

ARCHITECTURAL GROUP
Borges



East Elevation (Rear)

EXTERIOR MATERIALS & FINISHES

P-1	DUNN EDWARDS #6049	“CHAPS”	(PAINT)	S-1	EL DORADO STONE - PONDEROSA CLIFFSTONE	(STONE MASONRY)
P-2	DUNN EDWARDS #5322	“PALE PEARL”	(PAINT)	R-1	REDLAND CLAY TILE CO. - BAJA MISSION TILE	(ROOF TILE)
P-3	DUNN EDWARDS #5359	“CROSSROADS”	(PAINT)			
P-4	DUNN EDWARDS #5188	“RUDDY OAK”	(PAINT)	FA-1	SUNBRELLA COLOR #8631 “BURGANDY”	(FABRIC AWNING)
P-5	DUNN EDWARDS #6220	“POROUS STONE”	(PAINT)	FA-2	SUNBRELLA COLOR #8637 “FOREST GREEN”	(FABRIC AWNING)
P-6	DUNN EDWARDS #6350	“DARK ENGINE”	(PAINT)	FA-3	SUNBRELLA COLOR #8608 “BLACK”	(FABRIC AWNING)
P-7	SHERWIN WILLIAMS #7100	“ARCADE WHITE”	(PAINT)	FA-4	SUNBRELLA COLOR #8621 “TRUE BROWN”	(FABRIC AWNING)

