



Public Comment #1
County of El Dorado Clerk of the Board <edc.cob@edcgov.us>

Bos RCVD 10-14-21

10/14 Item 1 Comments - Support for Map #1

Andy Nevis <andynevis@gmail.com>

Wed, Oct 13, 2021 at 7:53 PM

To: Edc Cob <edc.cob@edcgov.us>, The BOSONE <bosone@edcgov.us>, bostwo@edcgov.us, The BOSTHREE <bosthree@edcgov.us>, The BOSFOUR <bosfour-old@edcgov.us>, bosfive@edcgov.us

Good evening Supervisors,

Unfortunately, I won't be able to attend your redistricting meeting tomorrow night, but I wanted to add my personal support for Draft map #1 (the City alternative). It keeps the northern part of Shingle Springs together with Rescue, the Coloma/Lotus Valley and the Georgetown Divide. As I wrote in my community of interest submission, keeping these communities together is important because of the North Shingle/Lotus Rd transportation corridor. Most residents of those communities come down and use the Ponderosa interchange to access Highway 50 and suburban communities to the west. The communities also share a rural and historic character.

Additionally, map #1 is the closest to the current boundaries. Given the Census delay and the limited amount of time for public input, I believe the county should avoid making drastic changes in this cycle. If map #1 is not chosen, I would encourage the Board to consider one of the other maps that keeps northern Shingle Springs with the Georgetown Divide.

Thank you for your consideration.

Andy Nevis
Shingle Springs



County of El Dorado Clerk of the Board <edc.cob@edcgov.us>

Comments on Redistricting

Gavin Feiger <gavin@keptahoeblue.org>

Thu, Oct 14, 2021 at 10:20 AM

To: "redistricting@edcgov.us" <redistricting@edcgov.us>, "edc.cob@edcgov.us" <edc.cob@edcgov.us>, Sue <sue.novasel@edcgov.us>

Cc: Darcie Goodman Collins <Darcie@keptahoeblue.org>, Jesse Patterson <Jesse@keptahoeblue.org>

Hello El Dorado County Board of Supervisors,

Please find attached a letter from the League supporting a hybrid of the City-based alternative (#1) and the Community of Interest (COI)-based alternative (#3). We also submitted these comments using the online form.

Thank you for your consideration.

Gavin Feiger

Senior Land Use Policy Analyst, League to Save Lake Tahoe

2608 Lake Tahoe Boulevard, South Lake Tahoe, CA 96150 | 530.541.5388 | keptahoeblue.org



This email message is for the sole use of the intended recipient(s) and may contain confidential and privileged information. Any unauthorized review, use, disclosure or distribution is prohibited. If you are not the intended recipient, please contact the sender by reply email and destroy all copies of the original message.



LTSLT Redistricting Comments - El Dorado County 2021.10.14.pdf

505K

October 13, 2021

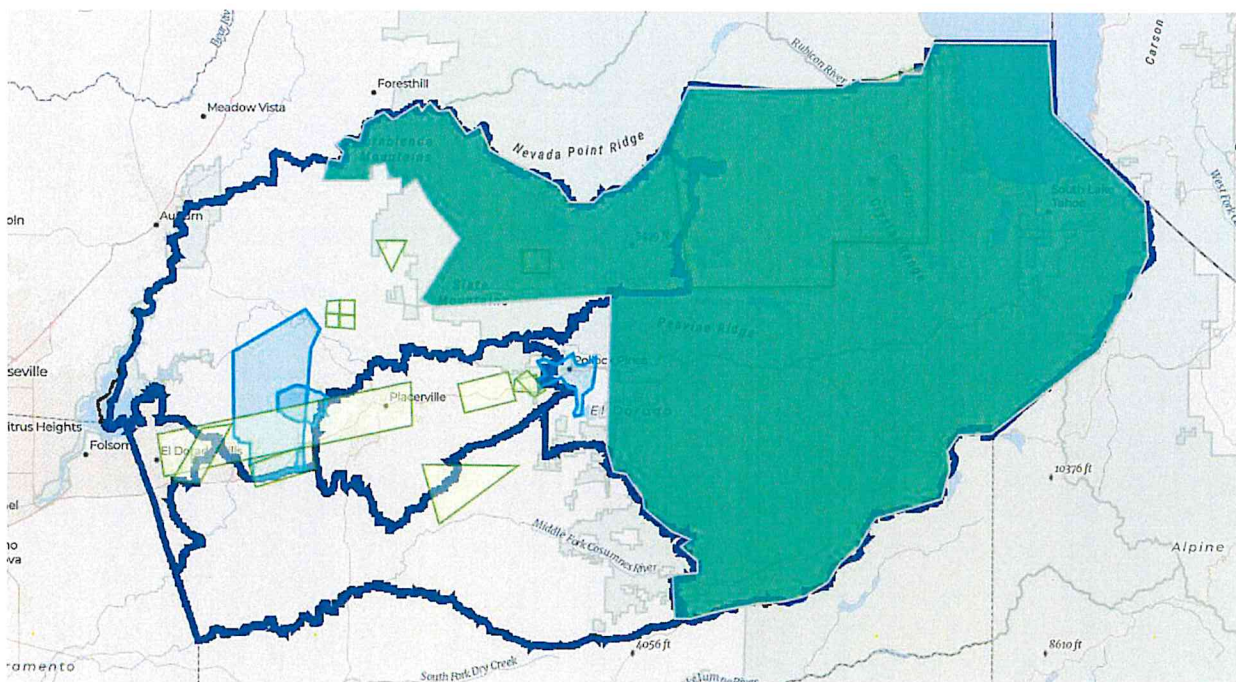
El Dorado County Board of Supervisors
330 Fair Lane
Placerville, CA 95667
Submitted via email – redistricting@edcgov.us

Re: County Redistricting

Supervisors Novasel, Parlin, Thomas, Turnbo, and Hidahl –

On behalf of the League to Save Lake Tahoe ("League" or "Keep Tahoe Blue"), we thank you for your service and dedication to an independent, fair, and inclusive redistricting process for the residents of California. The League to Save Lake Tahoe, also known by the slogan "Keep Tahoe Blue," is Tahoe's oldest and largest nonprofit environmental advocacy organization. Founded in 1957. The League is dedicated to community engagement and education and collaborating to find solutions to Tahoe's environmental challenges.

We write to respectfully request that the Board of Supervisors select a hybrid of the City-based alternative (#1) and the Community of Interest (COI)-based alternative (#3).¹ In order to protect Tahoe's environment, economy and communities, we must ensure elected representation from the Basin. With that goal in mind, we would like to see Pollock Pines grouped in with Camino and Placerville and the Tahoe district instead to include the north-east area identified in the COI-based alternative (roughly Mosquito-Spanish Flat-Quintette-Volcanoville), as roughly depicted here:



¹ Redistricting Draft Maps: <https://www.edcgov.us/Government/Elections/Pages/Redistricting-Draft-Maps.aspx>

In the Tahoe Basin, we care about our natural resources, creating sustainable tourism, forest health, our National Forests, National Parks, and State Parks, and creating a cohesive community. Resources of concern include fire and forest health, water quality and supply, ecosystem health, national and state parks and federal land, highways and infrastructure – including snow and other weather-related issues, and an economy based on tourism from the Sacramento-Bay Area-Reno megaregion. The City of South Lake Tahoe and unincorporated El Dorado County within the Basin share these interests, resources, and priorities with much of the rural areas at higher elevations in El Dorado County.

Based on shared values, resources and infrastructure, we propose a combination of the City-based and COI-based proposals. We appreciate the City-based alternative's goal to keep the Tahoe Basin and much of the Eldorado National Forest together. And we appreciate the COI-based alternative's goal to keep Communities of Interest together.

We also submitted this feedback using the online mapping tool. Thank you, Supervisors, for undertaking this time-consuming and thoughtful process, especially the public engagement aspect. We appreciate your consideration of our comments and please do not hesitate to reach out to me directly with any questions.

Sincerely,

A handwritten signature in black ink, appearing to read 'Gavin Feiger', followed by a long horizontal line.

Gavin Feiger, Senior Land Use Policy Analyst
on behalf of the League to Save Lake Tahoe
gavin@keeptahoeblue.org | 530.541.5388