

Diamond Springs and El Dorado Community Advisory Committee

CUP25-0012

Westside Church – New Worship Center



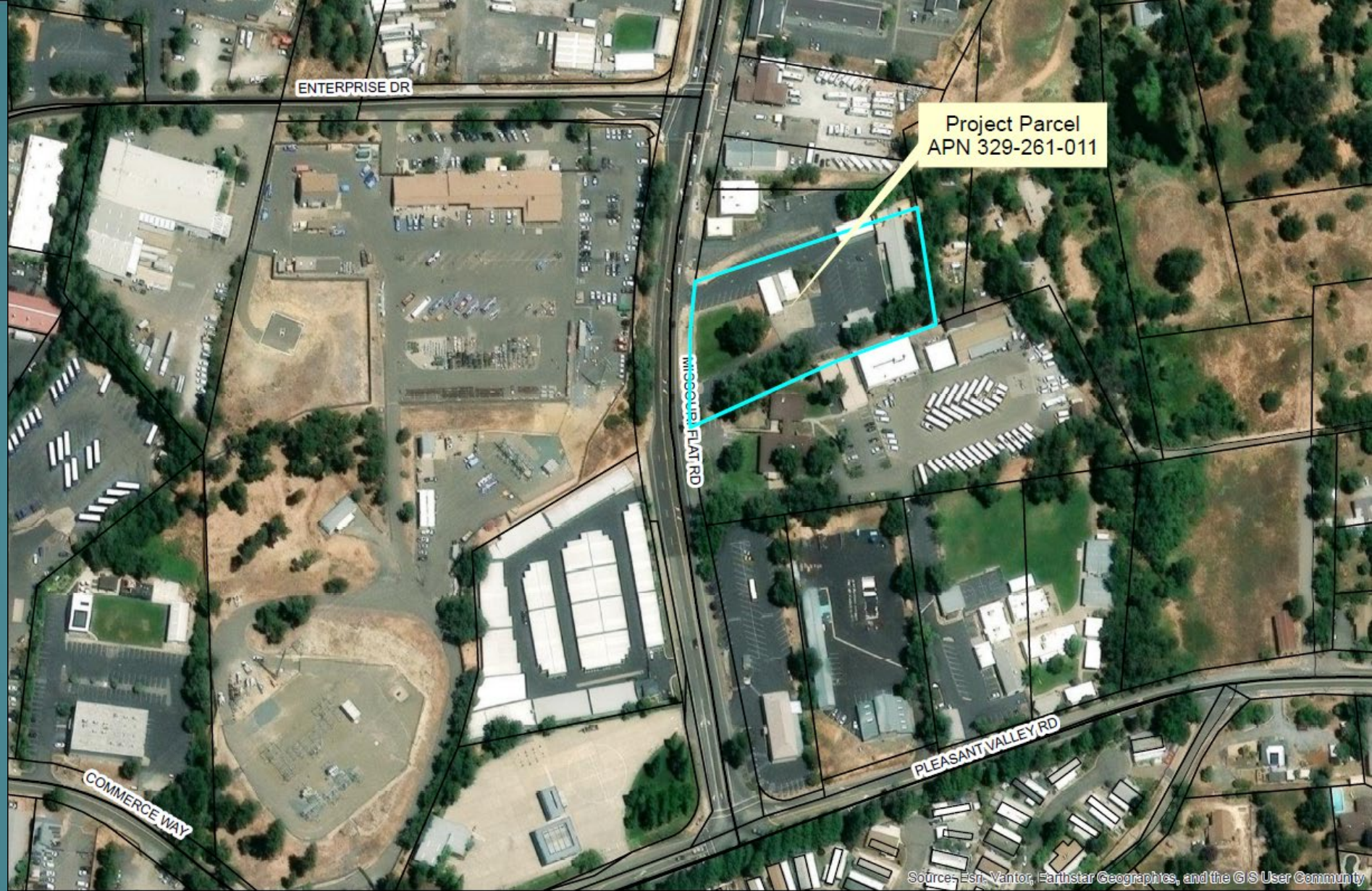
MARCH 19, 2026

PLANNING AND BUILDING DEPARTMENT - PLANNING DIVISION

Project Description

Conditional Use Permit (CUP) for a proposed 7,200 square foot worship center located within the existing footprint of the playground area and two structures that will be removed.

Project Vicinity Map



Source: Esri, Vantor, Earthstar Geographics, and the GIS User Community

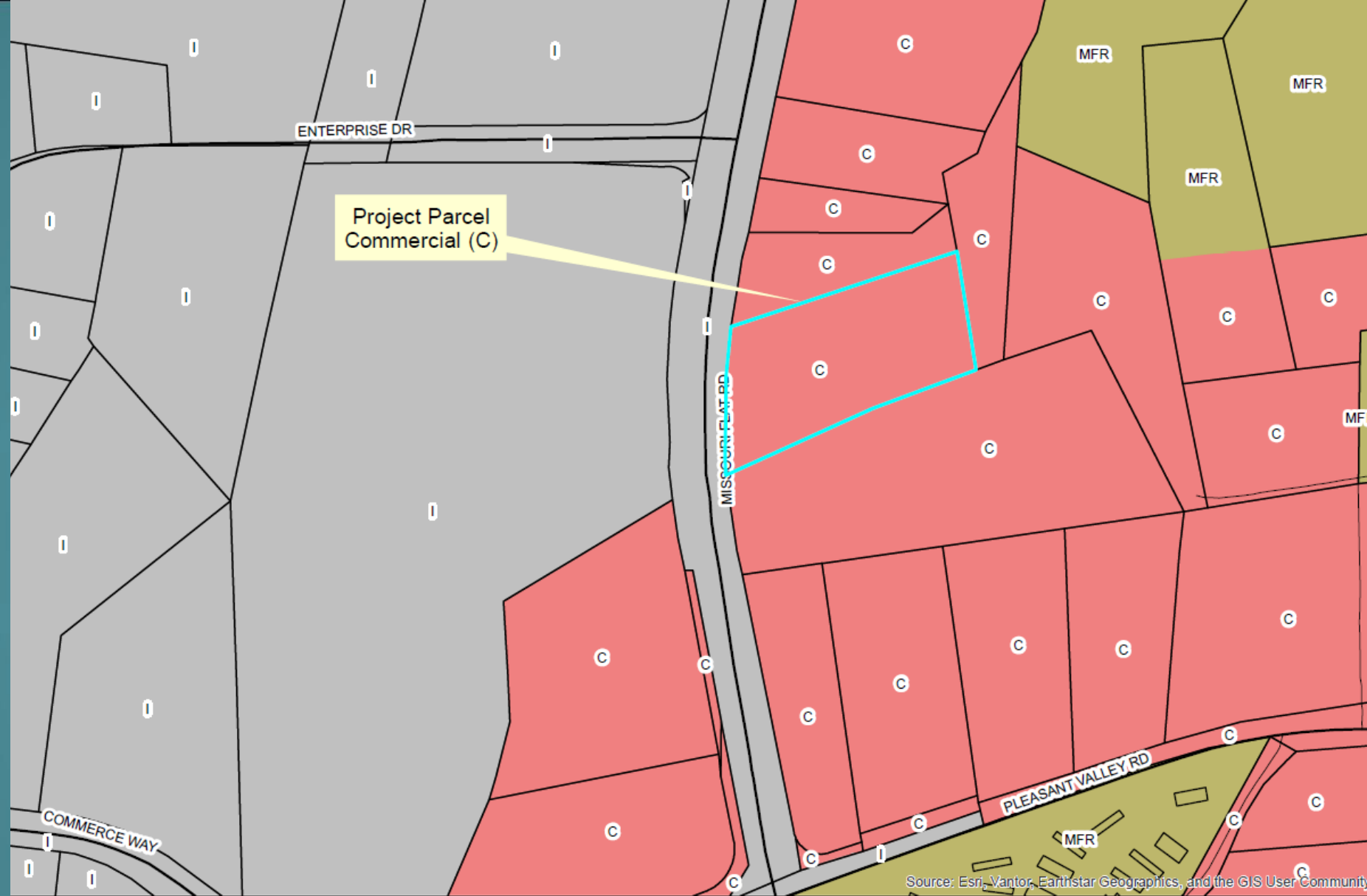


- Legend**
- Parcel Lines
 - Roads
 - MAJOR
 - MINOR

CUP25-0012/Westside Church - New Worship Center
Exhibit A - Vicinity Map



General Plan Land Use Map



Source: Esri, Vantor, Earthstar Geographics, and the GIS User Community

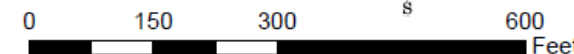
Legend

- Parcel Lines
- Commercial
- Industrial
- Multi-Family Residential

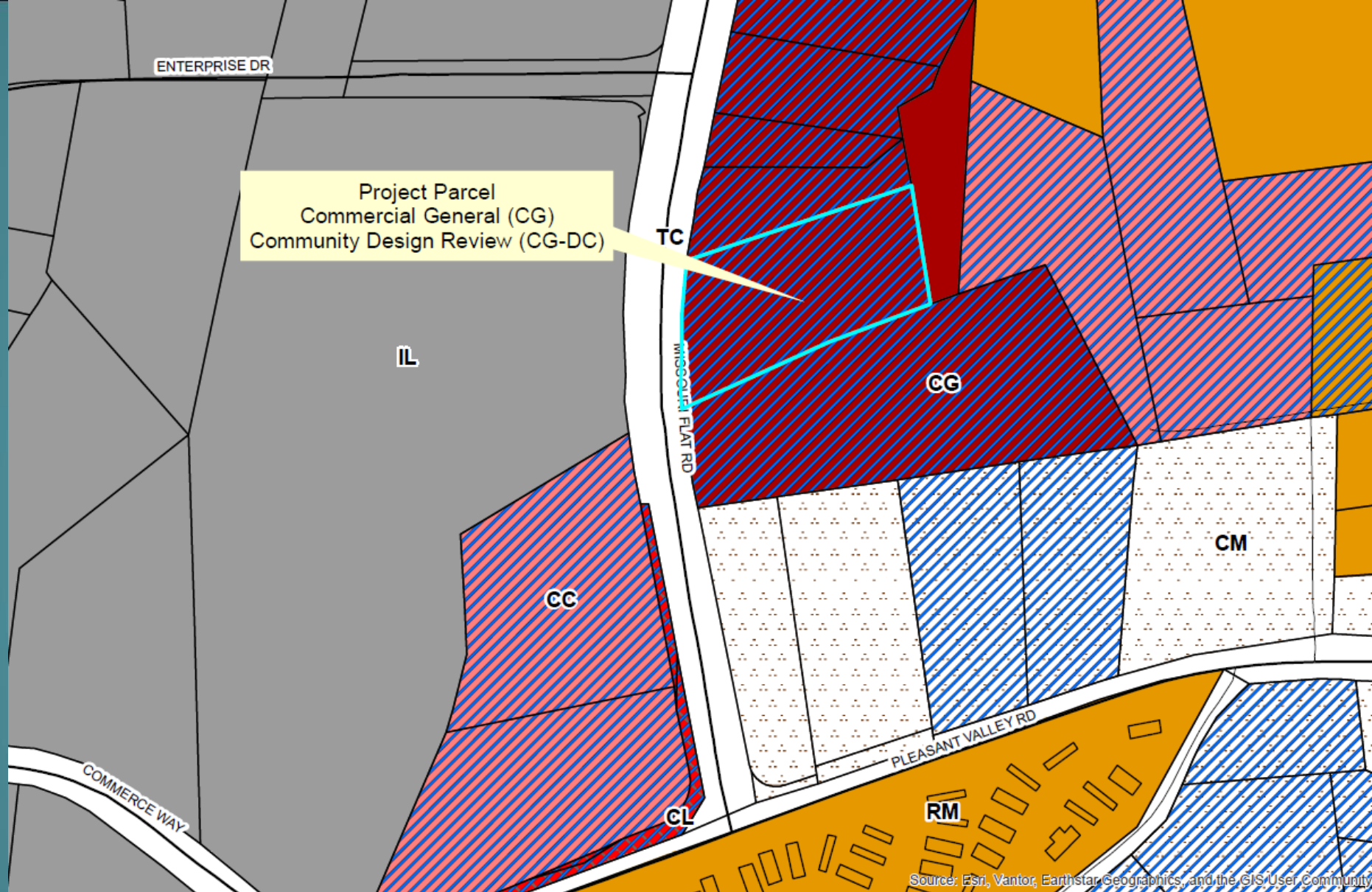
CUP25-0012 - Westside Church - New Worship Center
Exhibit C - General Plan Land Use Map



26-0257 D 4 of 10



Zoning Map



Source: Esri, Vantor, Earthstar Geographics, and the GIS User Community

Legend

- Parcel Lines
- CC = Commercial Community
- CG = Commercial General
- CL = Commercial Limited
- CM = Commercial Mainstreet
- CR = Commercial Regional
- IL = Industrial Low
- RM = Residential Multi-Unit
- DC = Design Control
- TC = Transportation Corridor

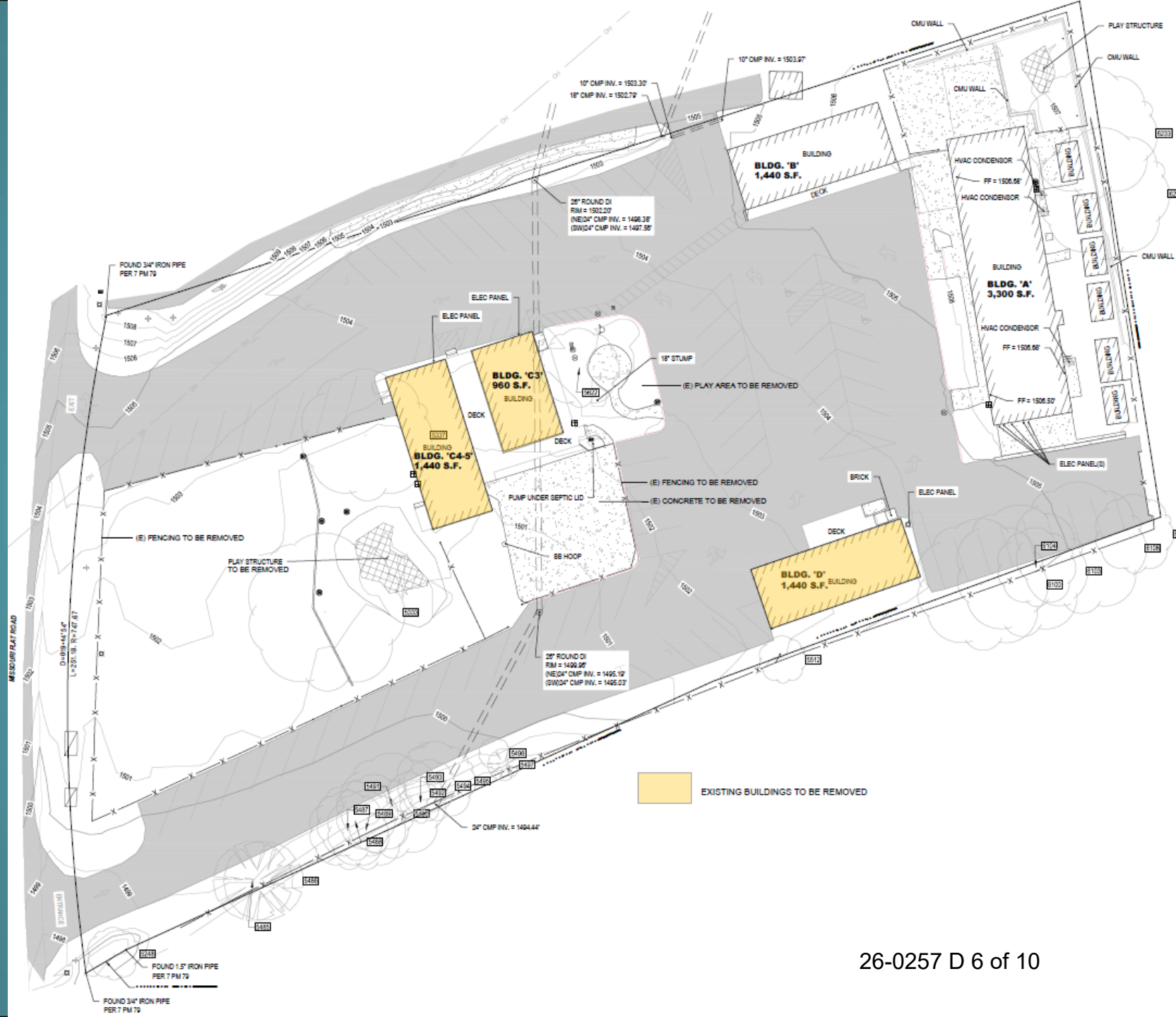
CUP25-0012 - Westside Church - New Worship Center
Exhibit D - Zoning Designation Map



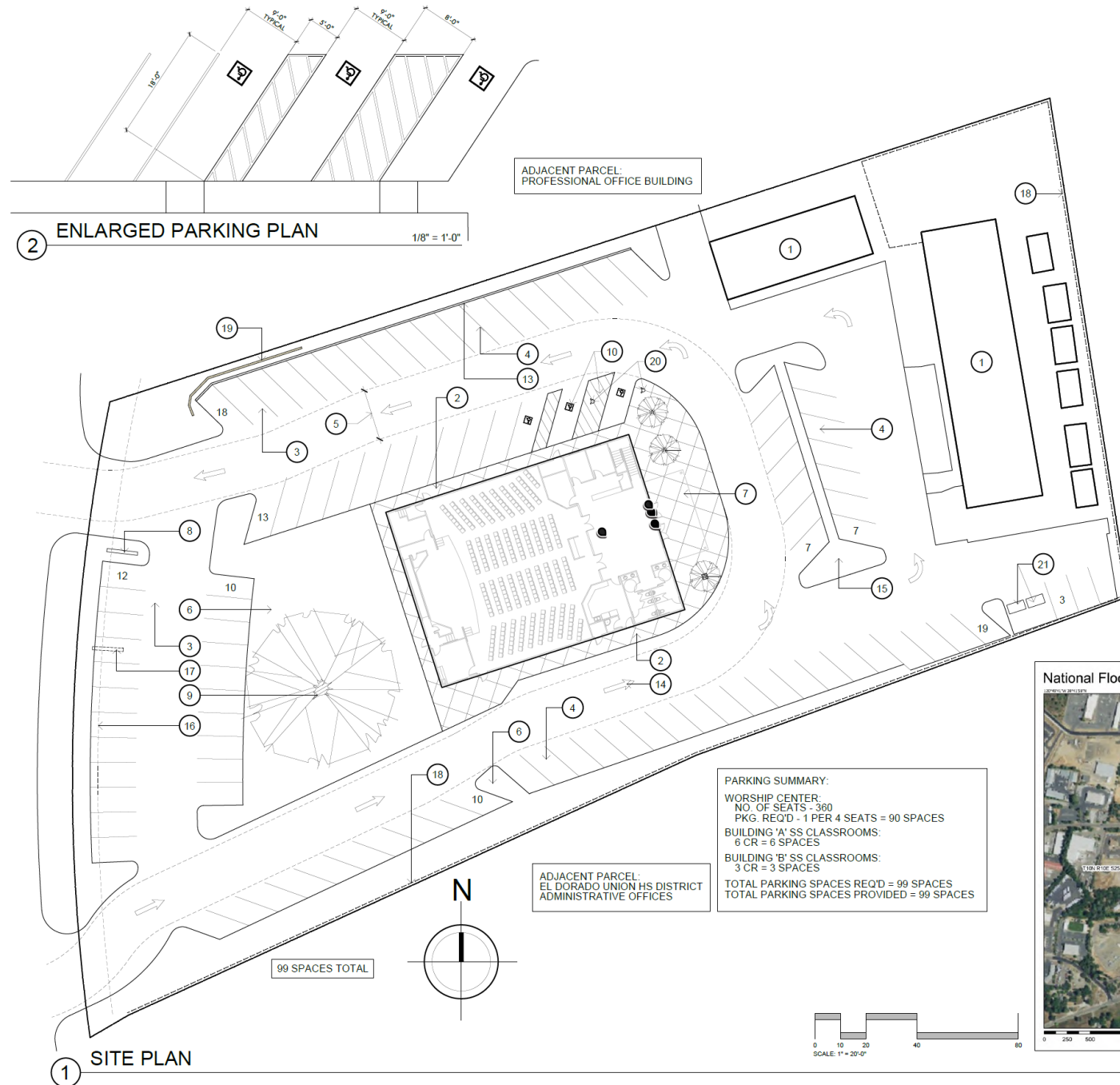
26-0257 D 5 of 10



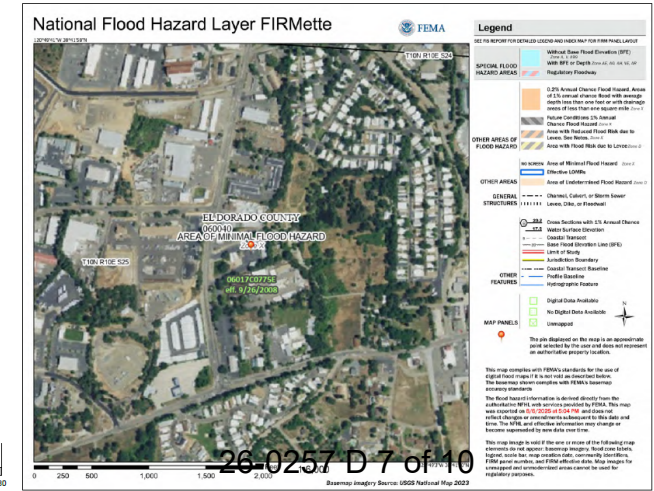
Project Plans



Project Plan Details



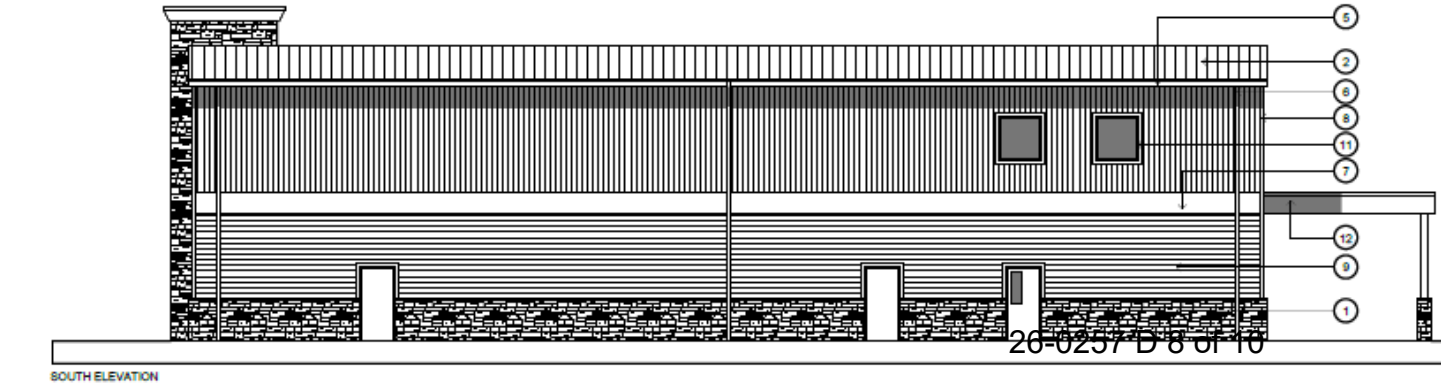
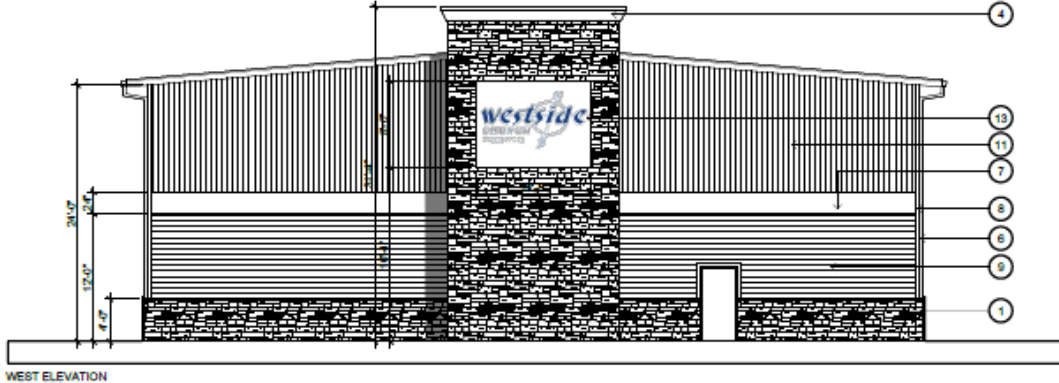
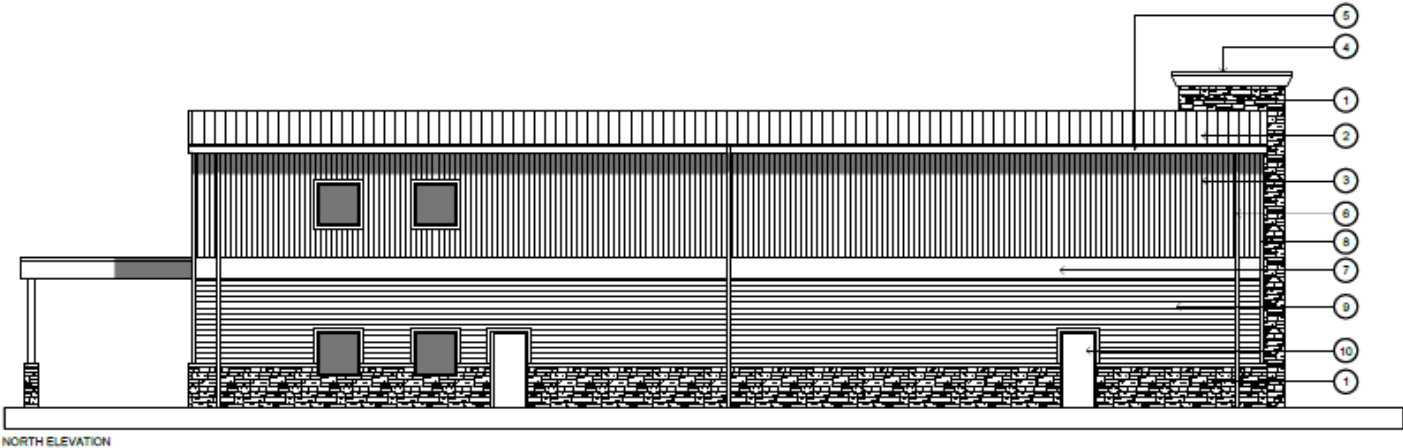
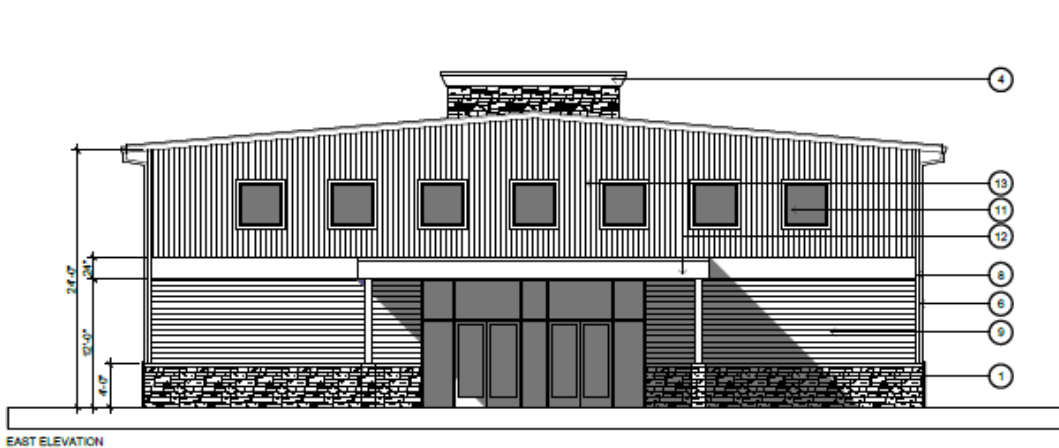
- KEYNOTE LEGEND**
- 1 EXISTING BUILDINGS TO REMAIN
 - 2 6" HIGH CONCRETE CURB / SIDEWALK - SEE CIVIL DWGS
 - 3 A.C. PAVING at DRIVEWAY and PARKING AREAS
 - 4 NEW PARKING SPACES
 - 5 20' FIRE ACCESS LANE
 - 6 LANDSCAPED AREA - SEE LANDSCAPE DRAWINGS
 - 7 CONCRETE ENTRY COURT
 - 8 EXISTING SIGNAGE TO BE RELOCATED HERE
 - 9 EXISTING TREE TO REMAIN
 - 10 ACCESSIBLE PARKING / LOADING AREA
 - 11 PROPERTY LINE SETBACK
 - 12 EXISTING AC PAVED ENTRY DRIVEWAY
 - 13 CURB / GUTTER PER CIVIL DRAWINGS
 - 14 DIRECTIONAL TRAFFIC MARKING
 - 15 PAINTED TRAFFIC ISLAND
 - 16 10' FRONT SETBACK
 - 17 EXISTING SIGNAGE LOCATION
 - 18 EXISTING CHAIN LINK FENCING TO REMAIN
 - 19 NEW CONCRETE RETAINING WALL PER CIVIL DRAWINGS
COLOR: UNPAINTED CONCRETE
 - 20 EXISTING FIRE HYDRANT TO BE RELOCATED
 - 21 TRASH / RECYCLE COLLECTION AREA



Project Plan Elevations

KEYNOTE LEGEND

- 1 STONE VENEER CLADDING
- 2 26 GA. R-PANEL STEEL ROOFING
- 3 METAL BUILDING METAL WALL PANEL
- 4 RIGID FOAM PARAPET CAP
- 5 METAL ROOF GUTTER
- 6 METAL GUTTER DOWNSPOUT
- 7 2' WIDE METAL BANDING
- 8 1X4 HARDIE TRIM BOARD
- 9 HARDIE-PLANK CEMENTITIOUS LAP SIDING
- 10 EXTERIOR METAL DOOR
- 11 ALUMINUM WINDOW
- 12 METAL ENTRY CANOPY
- 13 BUILDING SIGNAGE - UNDER SEPARATE PERMIT



Project Plan Elevations

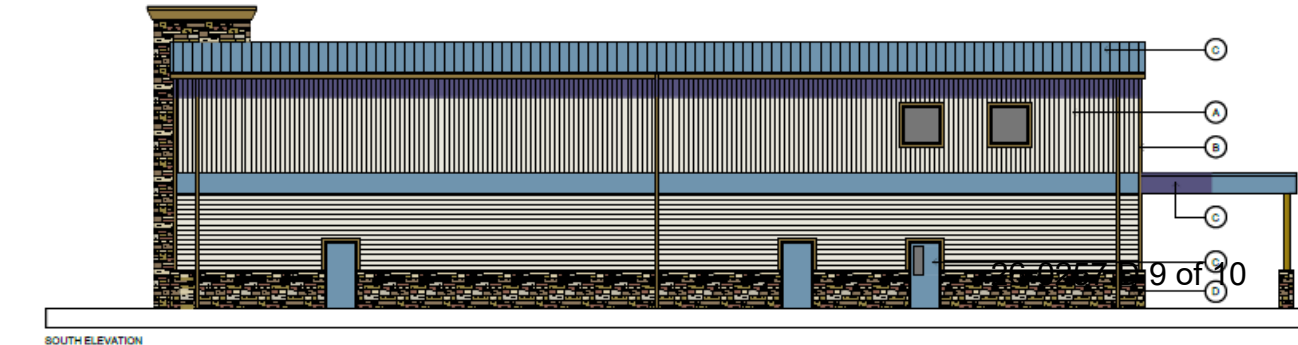
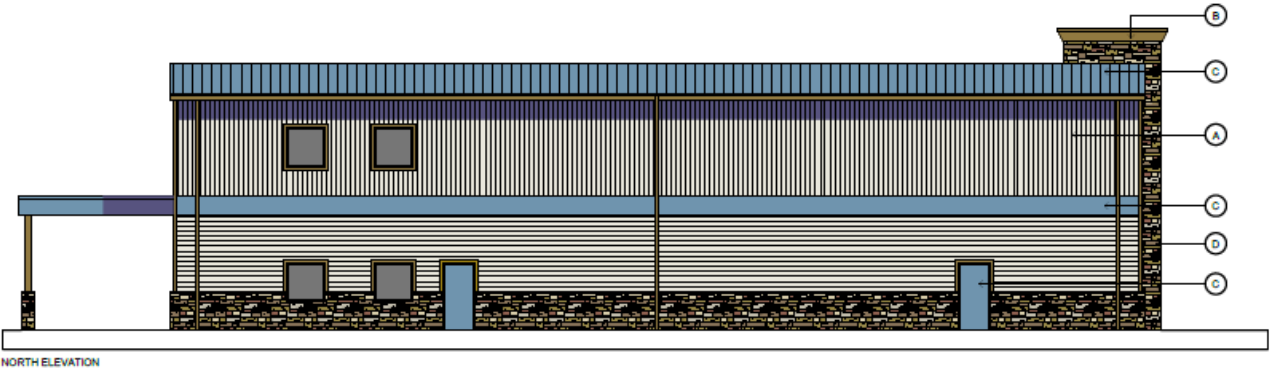
- 

COLOR 'A'
A-M-P "WARM WHITE"
DUNN EDWARDS COLOR TO MATCH
- 

COLOR 'B'
DUNN EDWARDS DE6138 DARK SEPIA
- 

COLOR 'C'
ABC METAL ROOF "TAHOE BLUE"
DUNN EDWARDS COLOR TO MATCH
- 

COLOR 'D'
EL DORADO STONE MT. LEDGE "YUKON"



Thank you.
Staff is available for questions.