

Forensic Programs



Mental Health Diversion:

court-supervised alternative that directs eligible individuals with mental health conditions into treatment instead of traditional criminal prosecution.



Behavioral Health Court:

Court program that connects justice-involved individuals with mental health or substance use needs to structured treatment & supervisions.



CARE Act:

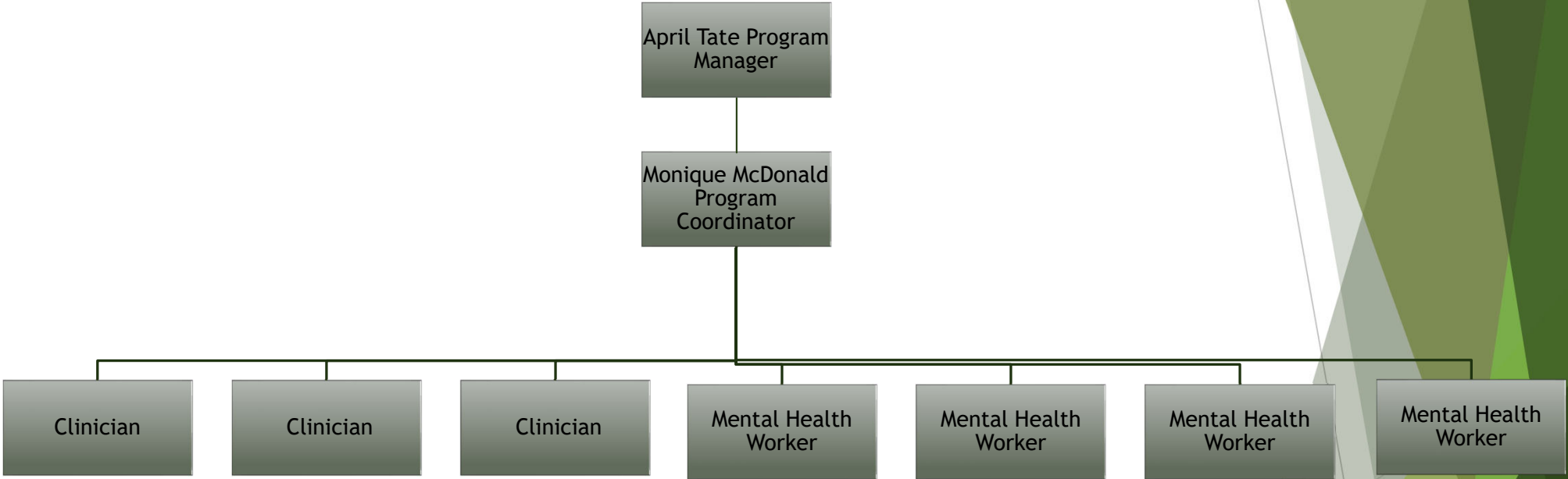
A civil court process that connects individuals w/untreated schizophrenia-spectrum or related disorders to a structured court-monitored care plan designed to stabilize their health and support long-term recovery



**HEALTH AND HUMAN
SERVICES AGENCY**
EL DORADO COUNTY

Transforming Lives and Improving Futures

Forensic Team





Mental Health Diversion= Pre Plea

Referred by their attorney

Court determine defendant suffers from MH disorder

Excluded dx: Neurodevelopmental Disorders, Physiological Disorders, Substance-Related Disorders and Addictions (when not co-occurring with a mental illness), Neurocognitive Disorders, Antisocial Personality Disorder, Pedophilia

Defense provides evidence of mental disorder and includes recent diagnosis from qualified MH expert

The court is satisfied the defendant's mental disorder played a significant role in the commission of the charged offense (a nexus connects the mental disorder and the charged offense(s))

A treatment plan is written by MH diversion staff that satisfies the court requirements

Misdemeanor offenses allow for 12 months of treatment.
Felony charges allow for 24 months.



HEALTH AND HUMAN
SERVICES AGENCY
EL DORADO COUNTY
Transforming Lives and Improving Futures

- ~Psychotic break while visiting family from college
- ~Accepted into diversion
- ~Completed 2-year program
- ~Charges dismissed
- ~now employed

Mental Health Diversion Success



Post Plea

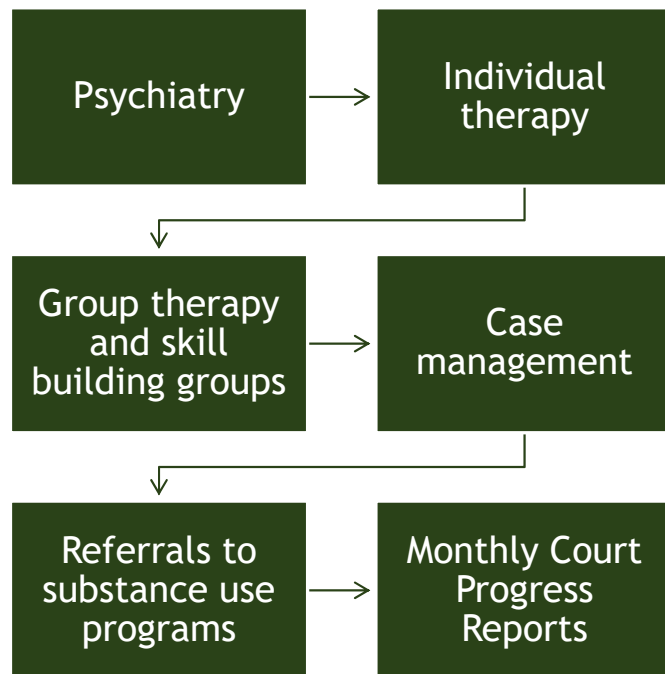
Charges are not dropped upon completion.

Often, clients who are recommended for BHC have an open Children's Protective Services case and are working towards reunification.



BEHAVIORAL HEALTH COURT

Services include:



Program Goals:

- Reduce the number of mentally ill individuals in county jails by diverting them into treatment programs rather than traditional prosecution.
- People with behavioral health needs should be met with dignity, compassion, advocacy, and support, and connected to timely and effective treatment rather than punitive responses.
- Help participants reach and maintain stability
- Manage their mental health symptoms
- Meet court requirements
- Engage in their communities and natural supports



- ▶ Authorizes specified adult persons to petition a civil court to create a **voluntary CARE agreement** that may include treatment, housing resources, and other services for persons with schizophrenia and other psychotic disorders who are not clinically stabilized in ongoing voluntary treatment.

CARE ACT



CARE Eligibility Criteria:

- ▶ Adults 18+ with Schizophrenia-Spectrum or Other Psychotic Disorder.
- ▶ Severe and persistent symptoms, That substantially impair functioning and long-term independence.
- ▶ Not stabilized despite ongoing voluntary outpatient treatment.
- ▶ Either unable to live safely/independently with signs of deterioration or need services to prevent relapse or further decline.
- ▶ CARE Court is the least restrictive option available.
- ▶ The individual is likely to benefit from participating in a CARE.



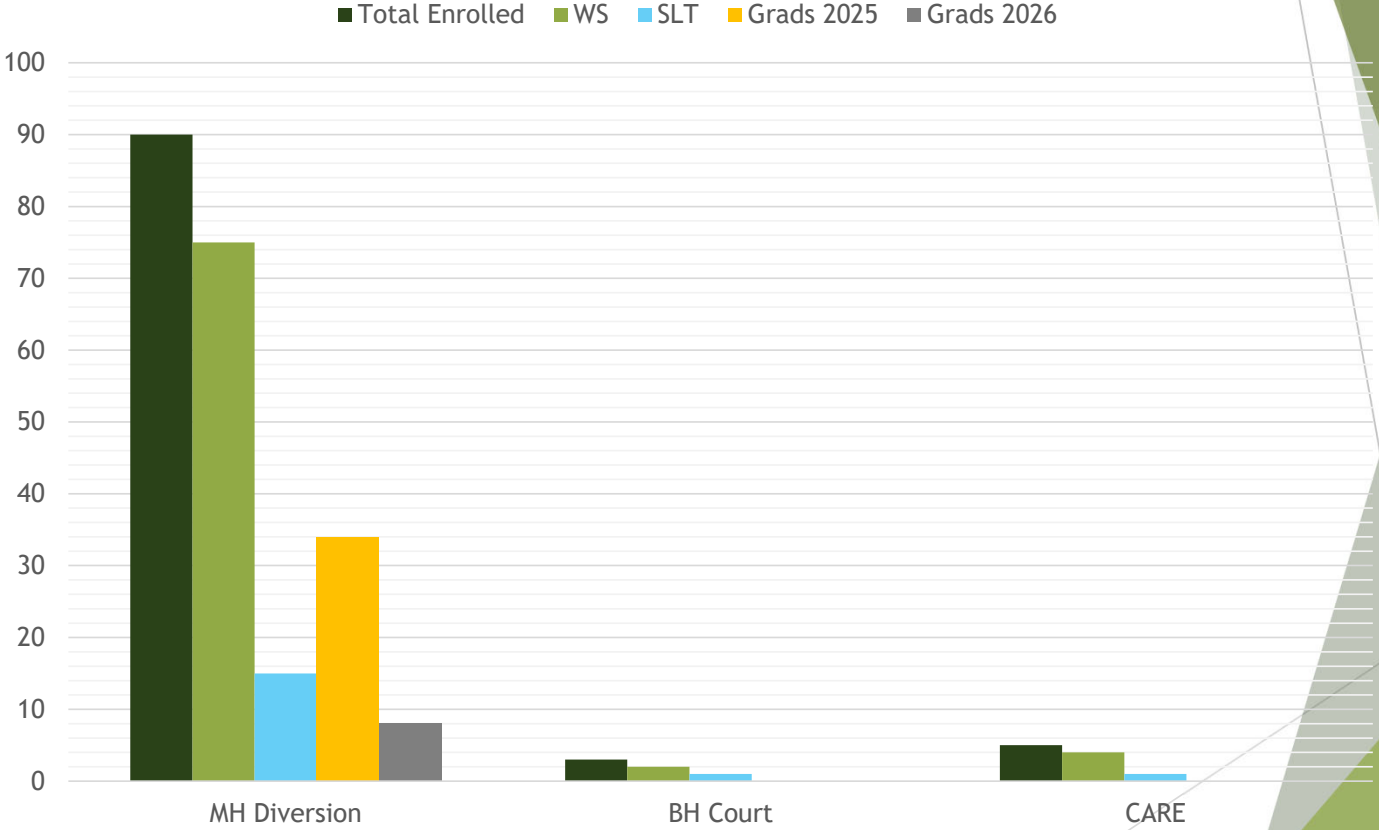
CARE ACT SUCCESS

- ~Schizophrenia and unhoused
- ~Engaged in CARE services
- ~Obtained housing
- ~Reunified with child
- ~Preparing to graduate



**HEALTH AND HUMAN
SERVICES AGENCY**
EL DORADO COUNTY
Transforming Lives and Improving Futures

DATA



**HEALTH AND HUMAN
SERVICES AGENCY**
EL DORADO COUNTY

Transforming Lives and Improving Futures

Questions?



**HEALTH AND HUMAN
SERVICES AGENCY**
EL DORADO COUNTY
Transforming Lives and Improving Futures