



Food Bank

El Dorado County

4550 Business Drive
Cameron Park, CA 95682
530-621-9950

info@foodbankedc.org
www.foodbankedc.org





Food Bank of El Dorado County



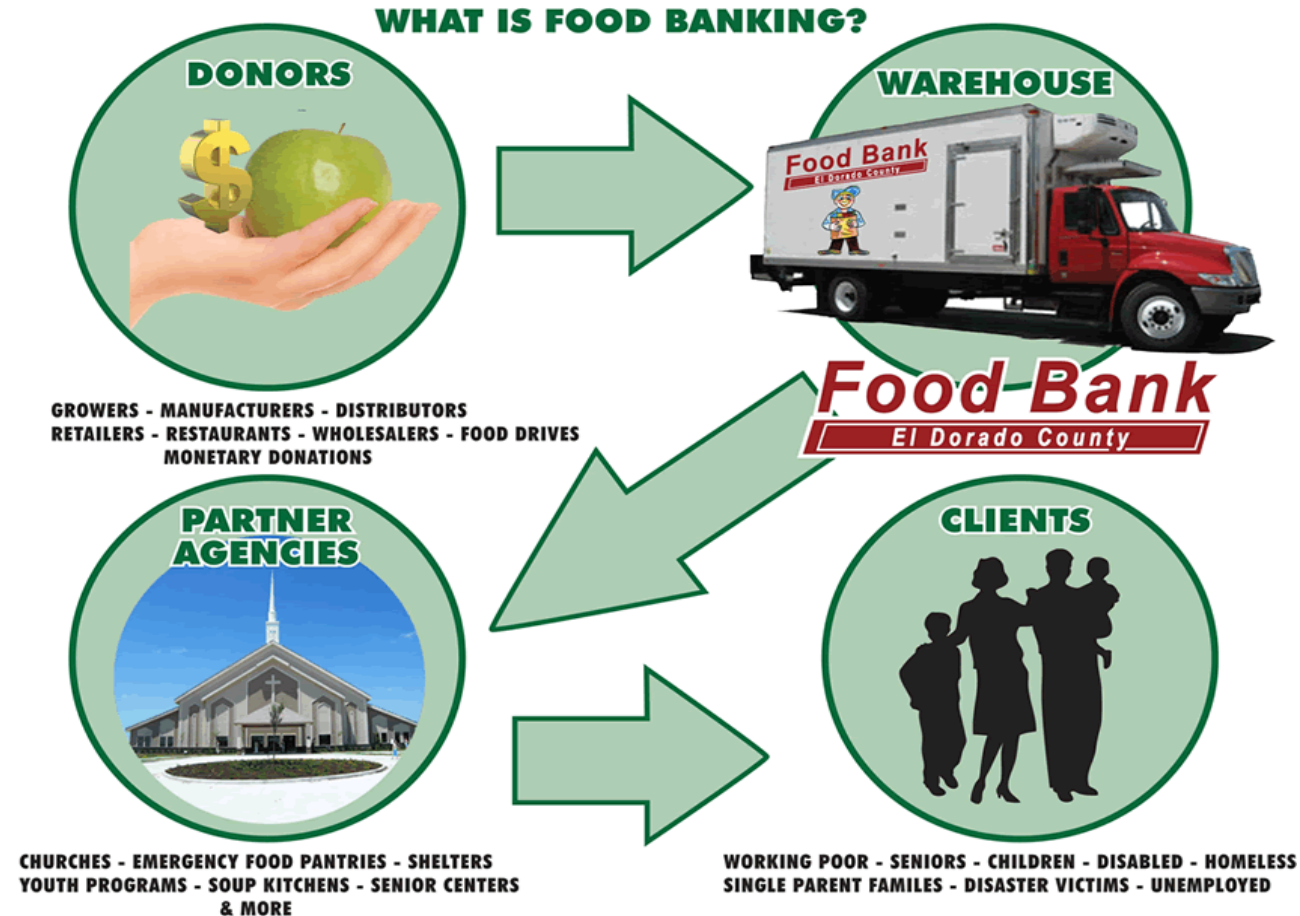
- The Food Bank has been serving El Dorado County residents since August 2000
- 35 Collaborative Partner Agencies help to provide emergency food assistance to over 12k individuals a month!
- 2023 California Nonprofit of the Year for District 5





What is Food Banking?

(How the Process Works)



Food Bank Programs

- **NO VET GOES HUNGRY** – In partnership with the Veterans Commission we provide a **monthly home delivery service to over 70 local Veterans.**
- **ELDER OUTREACH** – In partnership with the Shingle Springs Band of Miwok Indians, the FB **provides food distributions helping our seniors 60 years and older** struggling on a low-income budget (CSFP)
- **FARMERS MARKETS** – Each summer the FB provides additional fresh produce from local farmers to our partners agencies and **pop-up distributions throughout the county**
- **HARVEST MEAL** - **Annual November food distribution** which includes a turkey sides, and dessert needed for a holiday meal.
- **Harvest to Table Program** - The Food Bank works with local farmers to purchase locally grown produce, nuts, honey, and dairy (LFPA)





Donations & Volunteers

WHERE DO WE GET DONATIONS, AND WHERE DOES IT GO?

Monetary donations from individuals, organizations, and grant funding help with the purchase of product, transportation expenses, and to the overall overhead/operation of the Food Bank



WHAT DO OUR VOLUNTEERS DO?

Volunteers help us with sorting/bagging food items, preparing food boxes for our programs, helping at community outreach events, and also providing administrative support





The *Emergency Resource Center*

- **15,000 sq newly constructed building** next to the Food Bank will serve as a new Emergency Resource Center for El Dorado County
- **Partnering with EDC Sheriff's Office of Emergency Services** to secure all ERC in-kind donations

Rendering of Food Bank/Emergency Resource Center Compound Plan:



- The facility will also be equipped with a “mobile response unit” that can provide food and emergency supplies to our 30+ partner agencies, which will enable them to transition into satellite evacuation centers for those in rural and remote areas of the county.
- Commercial pack-and-go kitchen, to assemble and prepare meals for evacuees at satellite locations around the county
- Areas for responders, staff, and community leaders to meet and disseminate real-time emergency information to the community
- Stocked storage areas for emergency items like tarps, blankets, sandbags, and personal emergency backpacks
- Charging stations, generators, and power supplies available for evacuees in transition
- Restrooms and washing stations for emergency staff, community supporters, and evacuees in transition
- Between times of emergency activation (times of inactivation):
 - Free community event space
 - Community classroom space for educational and vocational training classes
 - Space for community trade licensing and examination